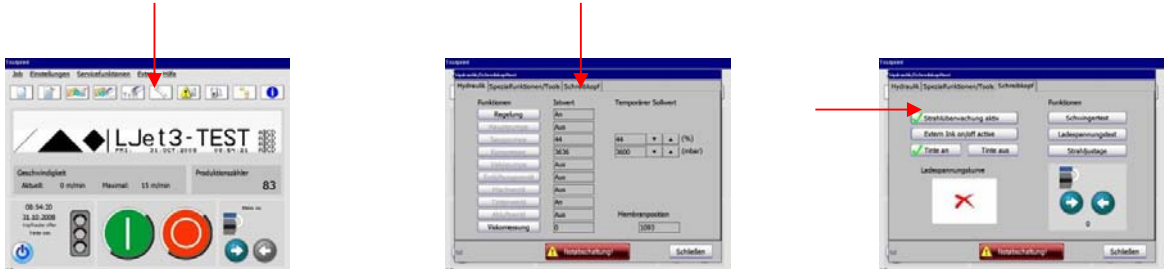


print head adjustment!



SERVICE - DOCUMENTATION

2. Touch the icon „wrench” and change to the menu „print head”. Turn off the function “Ink-Flow-Sensor”.



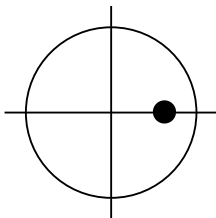
3. Remove the head cover and press the button „Jet Adjust”. The nozzle seal opens automatically to the “jet adjustment position” (4200)



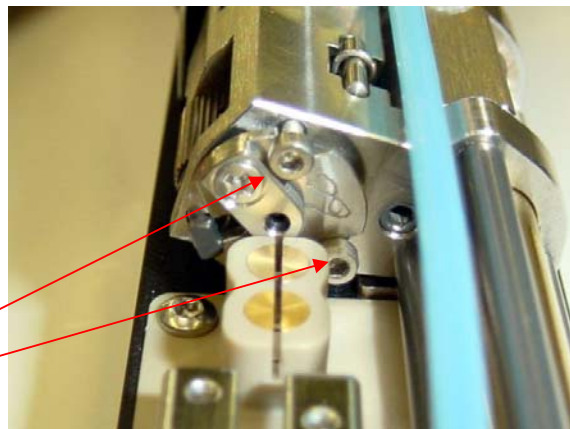
4. Align the ink stream with the two adjusting screws according to the sketch into the gutter tube.

Required tools: 6-fold magnifying glas
Allen key (SW 1,5)

Attention: It is not allowed to use a golf ball head allen key.
The screw heads could be damaged!

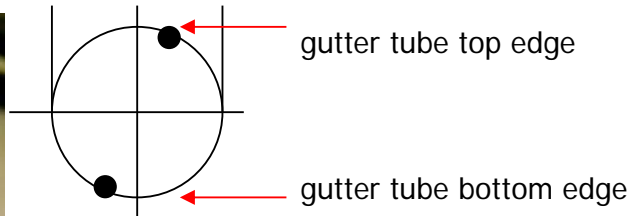


adjusting screws

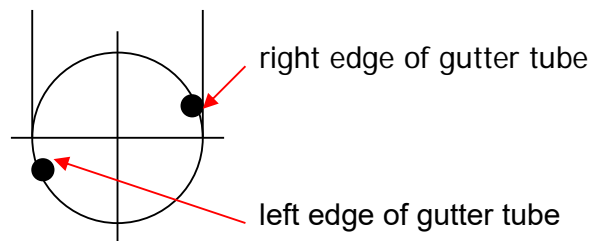


SERVICE - DOCUMENTATION

Rotating the upper adjusting screw CW, the ink stream is moving a little bit angular in direction of the gutter tube top edge. Rotating the screw CCW, the ink stream is moving a little bit angular in the direction bottom edge of the gutter tube.
(Viewing direction from nozzle to gutter)



Rotating the edgeways adjusting screw CW, the ink stream is moving a little bit angular upwards in direction of left edge of gutter tube. Rotating the screw CCW, the ink stream is moving a little bit angular downwards in direction of left edge of gutter tube. (Viewing direction from nozzle to gutter)



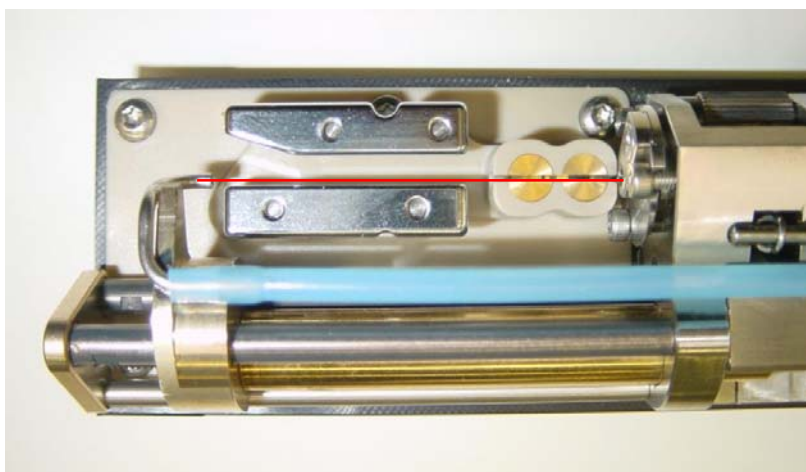
Hint: Due to the constructional positioning of the adjustment screws, there will be always a movement like a skew during the adjustment on any screw. Due to this existing skew, usually both adjusting screws must be adjusted for the correct attitude.

5. After adjustment of the entire drop production unit into the charging tunnel and deflecting plates, it has to be adjusted in such a way, that the ink stream knew parallel and concisely with the internal left of the charging tunnel.
(Viewing direction: From nozzle toward gutter tube)
The ink stream should run absolutely parallel to the deflecting plate.

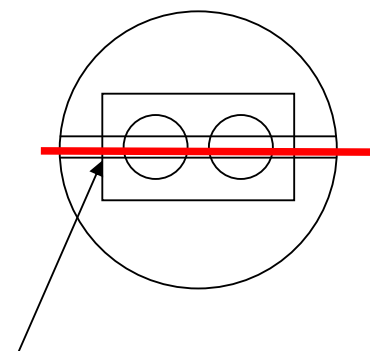
Required tools: 6-fold magnifying glas
 Allen key (SW 1,5) or Torx (T6)

During the optical evaluation of the radiation situation it is important that the point of view is directed exactly perpendicularly from above via the charging tunnel and ink stream, in order to exclude a parallax error to a large extent.

Attention: It is not allowed to use a ball head allen key.
The screw heads could be damaged!



adjusting position

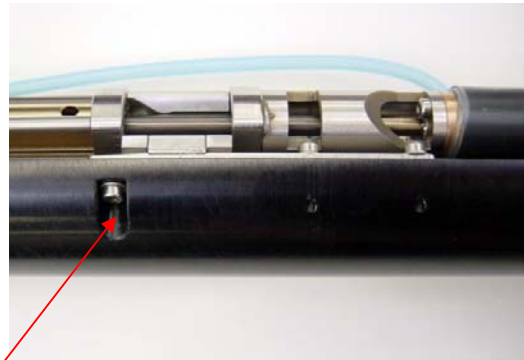
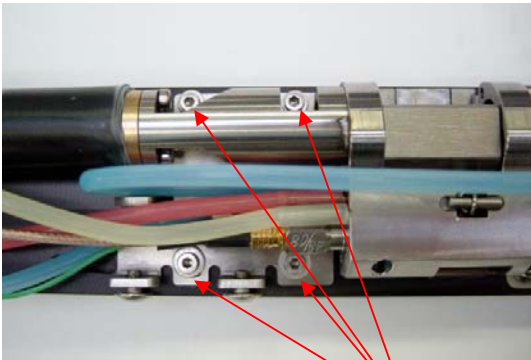


left edge of charging tunnel

SERVICE - DOCUMENTATION

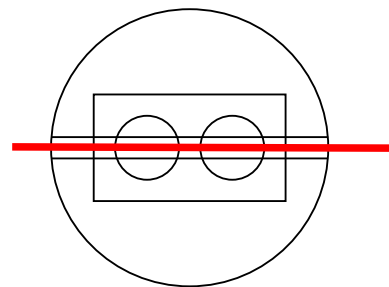
Sequence of adjustment:

- Open the 5 retaining screws of the mounting plate until it could be moved lightly by hand.
- Relocate the mounting plate until the ink stream reaches the final adjustment position.
- Tighten the retaining screws and check the jet position again.

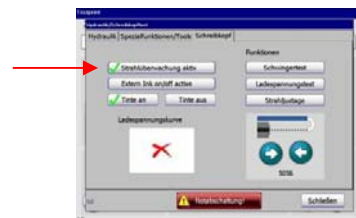


retaining screws (fix with Allen key (SW 1,5) or Torx (T6)).

6. Open the nozzle seal completely with the arrow button unless the ink stream goes inside the charging tunnel and the nozzle seal reaches the final position. The ink stream should be concentric inside the charging tunnel and parallel to the deflection plates. If not, readjust the position again.



7. Switch on the „Ink-Flow-Sensor“.





SERVICE - DOCUMENTATION

8. Close and open again the nozzle seal. Do a final check up for the correct position of the ink stream.