

VARIO III

Interface Description



Copyright by Carl Valentin GmbH / 7956015.0220

Information on the scope of delivery, appearance, performance, dimensions and weight reflect our knowledge at the time of printing.

We reserve the rights to make modifications.

All rights, including those regarding the translation, are reserved.

No part of this document may be reproduced in any form (print, photocopy or any other method) or edited, copied or distributed electronically without written permission from Carl Valentin GmbH.

Due to the constant further development of our devices discrepancies between manual and device can occur.

Please check www.carl-valentin.de for the latest update.

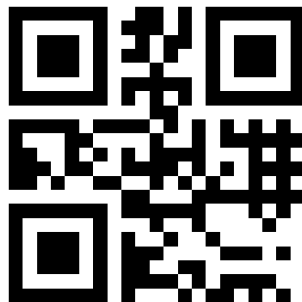
Trademarks

All named brands or trademarks are registered brands or registered trademarks of their respective owners and may not be separately labelled. It must not be concluded from the missing labelling that it is not a registered brand or a registered trademark.

Carl Valentin label printers comply with the following safety guidelines:

CE EG Low-Voltage Directive (2006/95/EC)

EG Electromagnetic Compatibility Directive (2004/108/EC)



REDEMAC

3540 Griffith St, Saint-Laurent, Quebec H4T 1A7

Phone: (888) 335-9570

www.redemac.com
request@redemac.com



Table of Contents

1	Serial Data Transmission	5
1.1	Connector Assignment (9-pin DSUB Socket)	5
1.2	Connection Plan RS232	6
2	Parallel Data Transmission	7
2.1	Connection Plan	7
3	Text, Bar Code, Graphic	9
3.1	Definition of Rotation	9
3.2	Definition of Datum Point	9
4	Data Format	11
4.1	Explication	12
4.2	Definition of Field Attributes/Field Properties (optional)	13
4.3	Field Name	14
4.4	Field Selection by Free Definable Field Number	18
5	Mask Set	19
5.1	Text	19
5.2	One-Dimensional Bar Code	21
5.3	ITF Bar Code	22
5.4	PDF417	23
5.5	MAXICODE	24
5.6	DataMatrix	25
5.7	GS1 DataMatrix	26
5.8	CODABLOCK F	27
5.9	GS1 DataBar (RSS Code)	28
5.10	QR Code	29
5.11	Aztec Code	30
5.12	Rectangle	31
5.13	Line	31
5.14	Internal Graphic	32
6	Text Set	33
6.1	Examples	34
7	Graphic Set	35
7.1	General Graphic Format	35
7.2	Graphic in PCX Format	35
7.3	Example PCX File	36
8	Variables	37
8.1	Set Structure	37
8.2	Link Field	37
8.3	Counter	38
8.4	Extended Counter	39
8.5	Date and Time	40
8.6	Format Identifier (Date & Time)	41
8.7	Currency Variable	44
8.8	Shift Variable	45
8.9	User Guiding	46
8.10	User Guiding with Mask	47
8.11	Memory Card Data	48
8.12	GS1-128 Parser	48
8.13	EPC Calculation (Electronic Product Code)	49
8.14	Check Digit	50
8.15	Substring	51

9	Parameter Sets	53
9.1	Label Parameters	53
9.2	Photocell.....	59
9.3	Printer Parameters	61
9.4	Interface.....	67
9.5	Network	69
9.6	Offset Values	73
9.7	Service Functions.....	75
9.8	Date & Time.....	79
9.9	Password.....	82
9.10	Compact Flash Card.....	85
9.11	Printing	89
9.12	Emulation.....	92
10	Parameter Sets for Options.....	93
10.1	Cutter.....	93
10.2	Dispenser I/O.....	95
10.3	Scanner	101
10.4	WLAN (Wireless Local Area Network)	104
11	Configuration & Status	109
11.1	Autostatus.....	110
12	Monitored Printing.....	113
12.1	Short Introduction	113
12.2	Parameter Sets (Host – Printer).....	113
12.3	Direct Enquiry	114
12.4	Answer Sets (Printer – Host).....	114
12.5	Sample Label.....	116
13	Font Examples	117
13.1	Bitmap Fonts (Not Proportional).....	117
13.2	Bitmap Fonts (Proportional)	117
13.3	Vector Fonts	117
14	Index	119

1 Serial Data Transmission

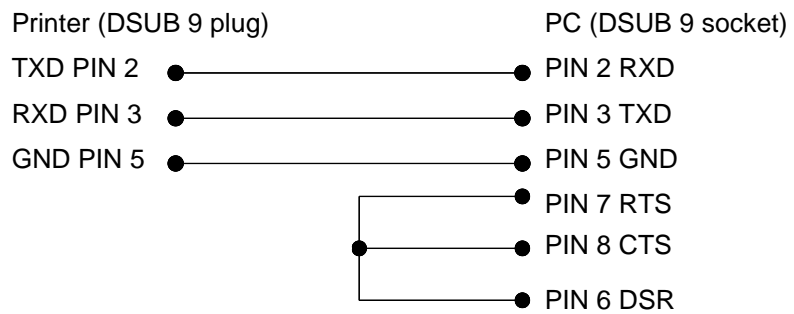
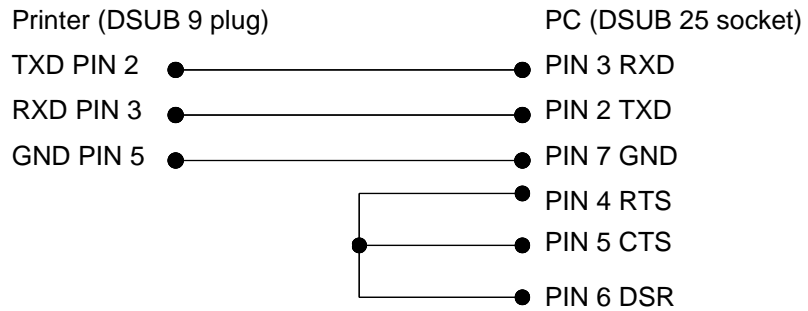
1.1 Connector Assignment (9-pin DSUB Socket)



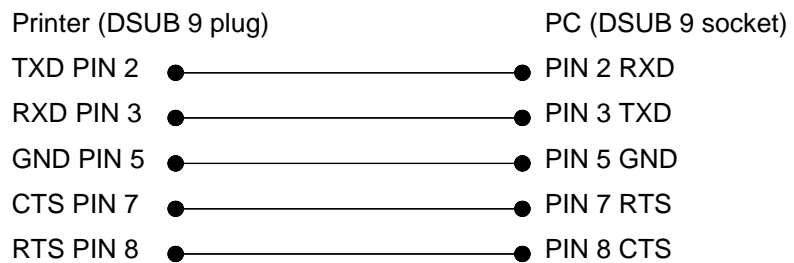
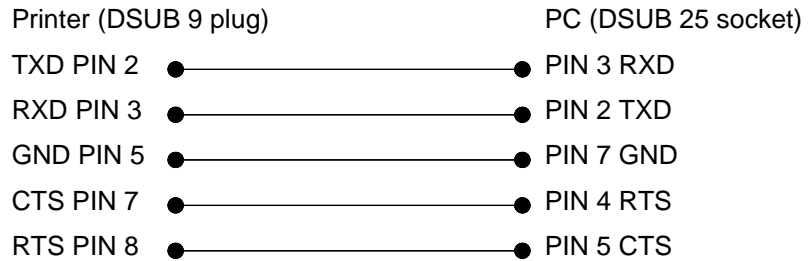
Pin	Signal	Description
2	T x D	Transmitting data line
3	R x D	Receiving data line
5	GND	GND signal
7	CTS	HW Handshake
8	RTS	HW Handshake

1.2 Connection Plan RS232

Software Handshake



Hardware Handshake



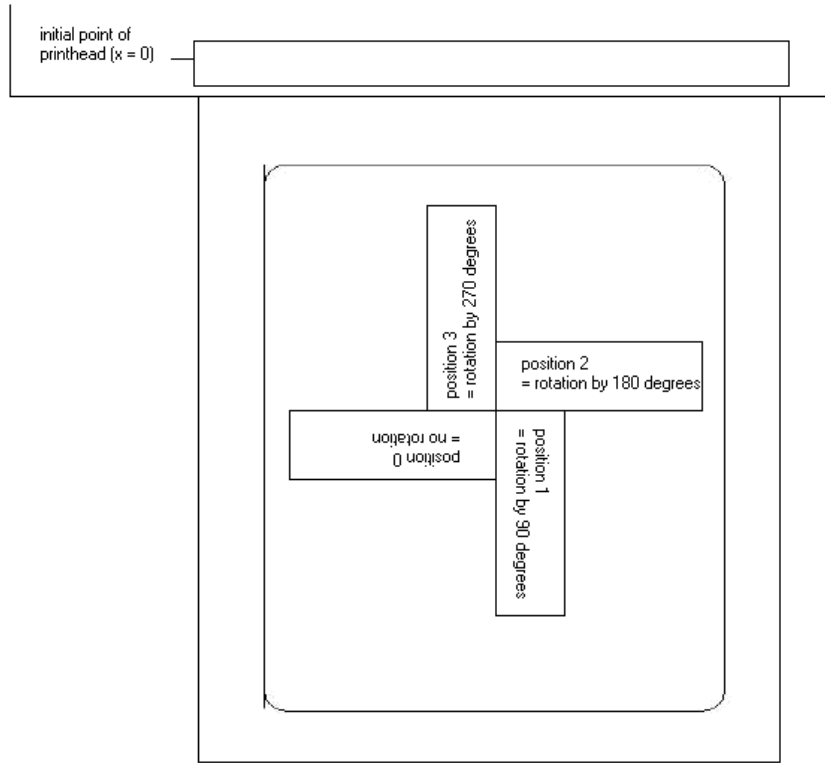
2 Parallel Data Transmission

2.1 Connection Plan

Signal Pin no.	Signal name	Direction	Function
1	$\overline{\text{STROBE}}$	(Input)	The $\overline{\text{STROBE}}$ signal indicates that data can be received. The impulse width to the receiving line has to be 0,5 μs at least.
2	DATA 0	(Input)	The signals are data bits sent to the printer. A HIGH level corresponds to logical 1 and a LOW level to logical 0.
3	DATA 1	(Input)	
4	DATA 2	(Input)	
5	DATA 3	(Input)	
6	DATA 4	(Input)	
7	DATA 5	(Input)	
8	DATA 6	(Input)	
9	DATA 7	(Input)	
10	ACK/	(Output)	An impulse of approx. 12 μs confirms data input for a LOW level and signals the further listening watch of the printer.
11	BUSY	(Output)	A HIGH level indicates that the printer cannot receive any data. On the following conditions the signal HIGH is possible: 1) for data input (impulse for each sign) 2) during a printing process 3) in Offline status 4) for printer failures
12	PE	(Output)	A HIGH level indicates that paper is used up.
13	SELECT	(Output)	High Online
14	AUTOFEED		
15	FAULT/	(Output)	Signal goes to LOW, in case 1) the paper is used up 2) the printer is Offline or 3) an error occurs.
16	INIT/	(Input)	A LOW level initializes the printer
17	SELECTIN/	(Input)	A LOW level informs the printer to be addressed
18-25	GND		

3 Text, Bar Code, Graphic

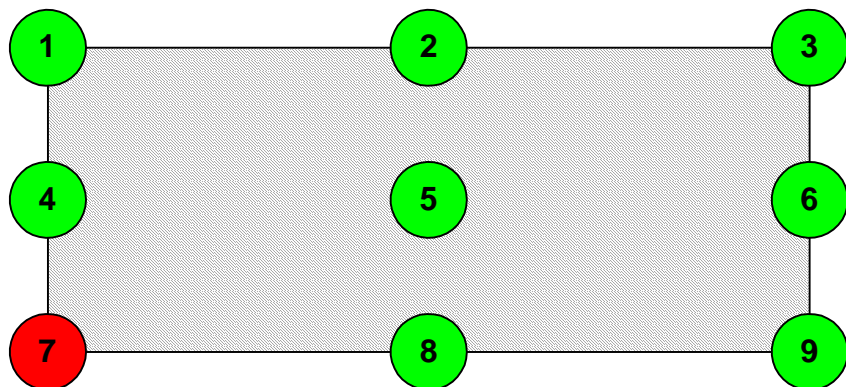
3.1 Definition of Rotation



3.2 Definition of Datum Point

The so-called datum point is the relation point for indication of position. In the meantime the datum point is also the point at which the selected object is rotated.

To determine the datum point in the mask sets, the possible datum points are numbered from left top (1) to right bottom (9). The default datum point is left bottom (7). This datum point is also used even if no indication is found in the mask set.



4 Data Format

The data format consists of four parties:

- Mask set
- Text
- Graphic
- Command

For a n-line label the following has to be transmitted:

- n - mask sets
- n - text sets
- n - graphic sets (if necessary)
- 1 - command set



NOTICE!

The command set always has to be transmitted at the end!

To each text on a label belong one MASK SET and one TEXT SET with the same field number.

To each code on a label belong one MASK SET, one TEXT SET and one CODE SET with the same field number.

To each box or line on a label belongs only one MASK SET.

To each graphic on a label belong several GRAPHIC SETS according to its size res. height, e.g. a graphic with a height of 10 mm needs 80 graphic sets.

Examples

Label with 3 lines of text:	3 mask sets
	3 text sets
	1 command set

Label with 2 lines of text, 1 box and 3 lines	6 mask sets
	2 text sets
	1 command set

For ALL data sets the following is valid:

Each set starts with

SOH = start of header → HEX format 01

Each set ends with

ETB = end of data transmission block → HEX-Format 17

Alternatively, the start character SOH can be set to 5E_{Hex}, the end character ETB to 5F_{Hex}. This is necessary if the connected system (e.g. UNIX) cannot transfer control signs.

All other data sets → ASCII format, but they will be transmitted as hexadecimal characters.

Example

A = identification of mask set - transmission: 41_{HEX}

n = field number '01' - transmission: 30_{HEX}, 31_{HEX}

4.1 Explication

x coordinate: Distance from right label rim in mm
Measured from the right label rim up to the lower left point of the corresponding line

y coordinate: Distance from upper label rim in mm
Measured from the beginning of the label down to the lower left point of the corresponding line

Bitmap fonts (not proportional)

01 = Font 01	0,8 x 1,1 mm	127 characters
02 = Font 02	1,2 x 1,7 mm	255 characters
03 = Font 03	1,8 x 2,6 mm	255 characters
04 = Font 04	4,0 x 5,6 mm	127 characters
05 = Font 05	1,8 x 3,2 mm (descender)	255 characters
06 = Font 06	1,5 x 2,9 mm	127 characters
07 = Font 07	1,2 x 2,2 mm (descender)	255 characters

Bitmap fonts (proportional)

21 = Font 21	(1,0; 13)	255 characters
22 = Font 22	(1,8; 21)	255 characters
23 = Font 23	(2,6; 31)	255 characters
24 = Font 24	(5,6; 67)	255 characters
28 = Font 28	(4,0; 48)	255 characters
29 = Font 29	(0,8; 9)	255 characters



NOTICE!

In order to reach best print results it is recommended always to choose the biggest possible font.

Vector fonts (proportional)

When in mode 'proportional text', the height and width of text have to be entered in mm.
These values refer to the capital 'M', i.e. the values of other characters are changing in proportion.

Vector fonts (autoscale)

When in autoscale mode, height and width of text has to be entered in mm.
The height of the text refers to all capital letters. When using small characters and descenders the height is changing in proportion. When entering the width, the complete file has to be considered. The text will be adjusted automatically, which means that the width of the characters is changing.

4.2 Definition of Field Attributes/Field Properties (optional)

Explanation

Additionally, to mask set 'AM[] ...' the possibility was created to define further field properties. In order to achieve a high flexibility, the field properties received own names/identifications. Therefore, the sequence as well as the number of field properties is free. If necessary, the mask set 'AC[]' is transferred additionally to mask set 'AM[]' to the printer.

Structure mask set

(SOH)AC[]at1=*value*;at2= *value*;...(ETB)

Attribute (at):	Description
BT BW QZ	ITF 14 (see page 22) bearer bar type bearer bar width quiet zone in 1/100 mm
NAME	Field name (see page 14) definition of field name
FN	Field number (see page 18) Free definable field number

This table is constantly extended. The current version is available on demand.

4.3 Field Name

Application (customized)

When label printers are connected to a computer system or machine controls, there is often the requirement that variable data is to be inserted into an existing layout. This data contents come from the superordinate computer system (database) or a machine control (e.g. PLC, scale, ERP system, etc.). Basically, it was always possible to integrate variable data into a 'loaded' layout (mask). The access to certain fields has been effected via the field index, i.e. a consecutive number. This field index is generated by Labelstar Office and can also change with layout changes, whereby the data allocation to the computer system/control is no longer correct.

Exmple



Print data

```
...
// TEXT (1/100 mm)
(SOH)AM[1]2405;803;0;1;2;4;1;1;0(ETB)
(SOH)BM[1]Feld 1(ETB)
// TEXT (1/100 mm)
(SOH)AM[2]421;856;0;1;2;4;1;1;0(ETB)
(SOH)BM[2]Feld 2(ETB)
// LINES: 2
...
```

The print data contains the definitions for the two text fields. The field index is always in '[]' of the mask or text setting.

If the text field 'Feld 1' is deleted on the label and then recreated, it gets a new index. In this case '2'. The text field 'Feld 2' gets the index '1'. As a result, an assignment via the field index is used only to a limited extent, without manual post-processing of the layout data.

Explanation

As an alternative to the field index, the assignment can also be made via the field name. A change in the field index has no longer any influence, and a changed layout is still filled in the right places with variable data of the computer system/control system.

Labelstar Office: The print data is supplemented by the following line:

(SOH)AC[1]NAME=" *Field name*"(ETB)

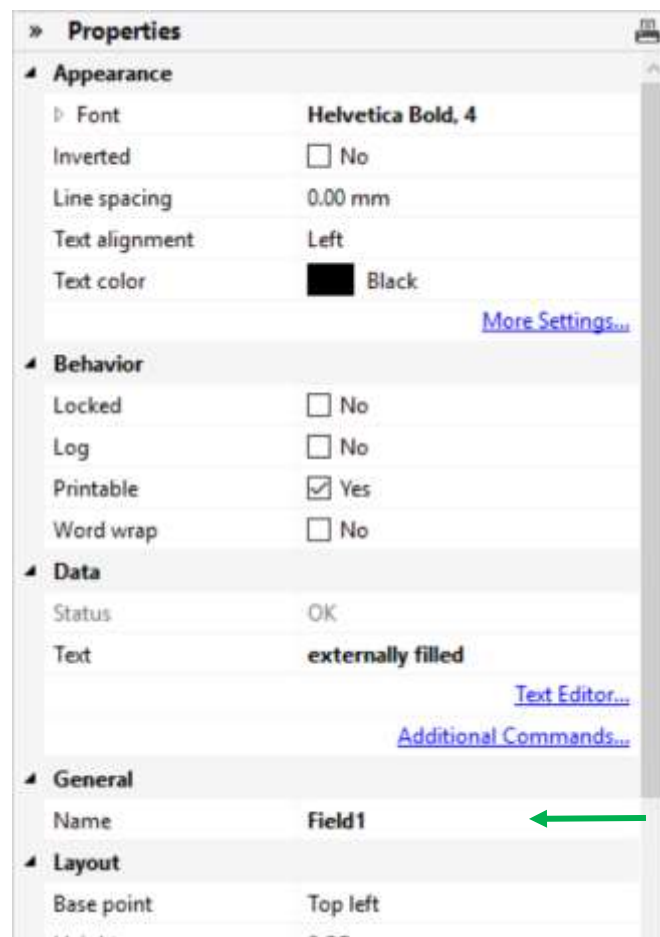
The field content defined via the text block can be changed by the computer system/control with the following command:

(SOH)BV[*Field name*]Feld 2(ETB)

This results in the following standard procedure for the connection to a high-level control and/or computer system.

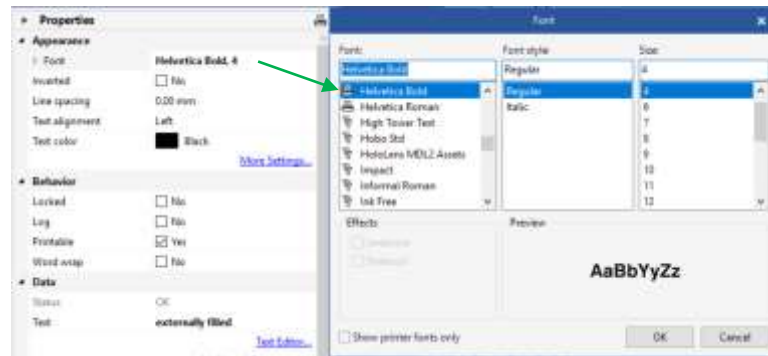
Label design with Labelstar Office

The field names are automatically transferred by Labelstar Office.



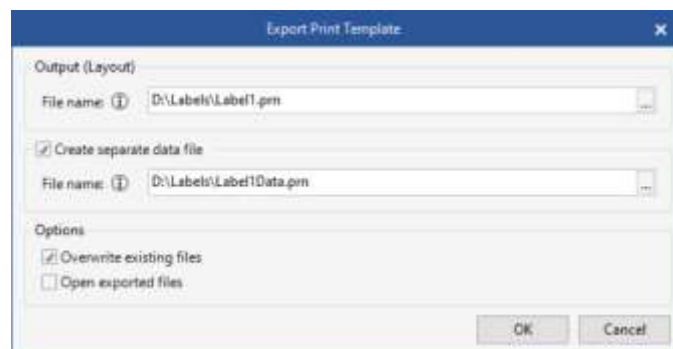
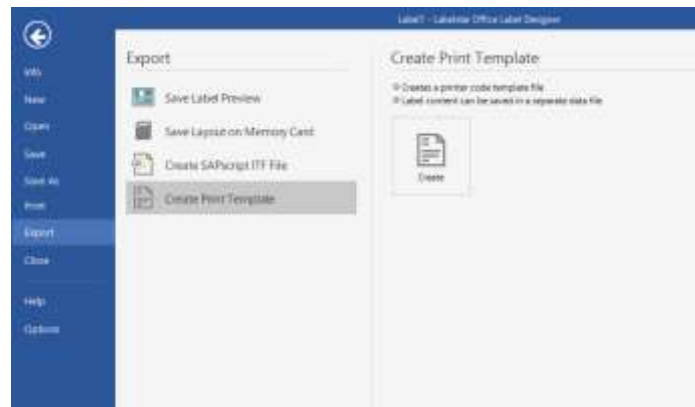
The desired field name (Field1) is entered in the properties of the text field.

For text fields, a printer-internal font must be used. The printer-internal fonts are marked by a printer symbol in the list.



Export to a print file and save the layout in the external controller

When the label design is finished, the label is exported to a print file. For this, Labelstar Office uses the function **File – Export – Create Print Template**.

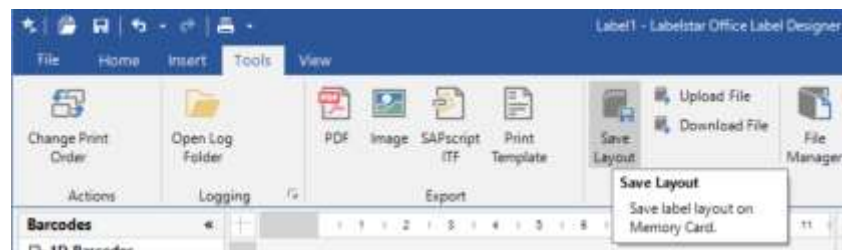


The option **Create separate data file** must be selected, otherwise the line (SOH)**FBC---r-----**(ETB) is included in the print file, which would immediately release a print procedure.

By starting a print procedure, this print file (layout definition / mask definition) is transferred from the controller/computer system to the printer first.

Save the layout on the memory card of the printer

As an alternative to 'Export to a print file' the label layout is saved on the memory card of the printer. For this, the memory card tool from Labelstar Office can be used.



The layout must be called by the controller/computer system **before** filling the variable fields.

The following parameter set is used:

(SOH)**FMA---rfilename**(ETB)

The path name is determined when saving and possibly contains a path.

Example: "A:\Standard\eti1".

Filling the variable fields by the controller/computer system

The higher-level control can select the variable fields by the field names and set the contents. Subsequently, the print job is restarted.

Example	(SOH)FMB---rfilename(ETB)	Loading the layout from mc
	(SOH)BV[ArtBez]screws(ETB)	Filling the field "ArtBez" with "screws"
	(SOH)BV[ArtNr]123456789(ETB)	Filling the field "ArtNr" with "123456789"
	(SOH)FBC---r----- (ETB)	Start printing

4.4 Field Selection by Free Definable Field Number

With the following described attribute it is possible to assign a free definable field number to a field. This field number does not have to be clear, i.e. several fields can have the same field number. In this way the same field contents can be assigned to different fields.

The following attribute identification is defined:

Attribute: **FN**

Description: free definable field number

After the field number was assigned with AC mask statement,

(SOH) AC [n] FN=nr (ETB)

n = field index

nr = free definable field number

it is possible to access to the field and/or the fields with the new BF text statement:

(SOH) BF [nr] text (ETB)

nr = field number

text = field contents

Example

```
// Assignment of field number field 1 and field 2
(SOH) AM[1]1000;2500;0;4;2;7;400;400;0 (ETB)
(SOH) AC [1] FN=100 (ETB)
(SOH) AM[2]2000;2500;0;30;2;4000;9;3;0;1 (ETB)
(SOH) AC [2] FN=100 (ETB)

// Access to field 1 and field 2 by field number
(SOH) BF [100]1234567890 (ETB)
```

5 Mask Set

5.1 Text

AM[n]y;x;p;a;d;z;dy;dx;lp;dp	
A	identification for mask set
M	identification for protocol version
n	field number
y	Y coordinate in 1/100 mm
x	X coordinate in 1/100 mm
p	identification for phantom field 0 = print 1 = no print
a	identification for field type 1 = bitmap font 2 = bitmap font inverse 4 = vector font 5 = vector font autoscale 6 = vector font inverse 7 = vector font autoscale inverse
d	rotation 0 = 0° 2 = 180° 1 = 90° 3 = 270°
z	character set not proportional bitmap fonts (1+2)
	01 = FONT 01 0,8 x 1,1 mm 127 characters
	02 = FONT 02 1,2 x 1,7 mm 255 characters
	03 = FONT 03 1,8 x 2,6 mm 255 characters
	04 = FONT 04 4,0 x 5,6 mm 127 characters
	05 = FONT 05 1,8 x 3,2 mm - descender 255 characters
	07 = FONT 07 1,2 x 2,2 mm - descender 255 characters
	character set proportional bitmap fonts (1+2)
	21 = FONT 21 (1,0; 13) 255 characters
	22 = FONT 22 (1,8; 21) 255 characters
	23 = FONT 23 (2,6; 31) 255 characters
	24 = FONT 24 (5,6; 67) 255 characters
	28 = FONT 28 (4,0; 48) 255 characters
	29 = FONT 29 (0,8; 9) 255 characters
	character set vector fonts (4-7)
	01 = Helvetica Bold
	02 = Helvetica Bold italics
	03 = Helvetica Roman
	04 = Helvetica Roman italics
05 = Swiss Light	
06 = Swiss Light italics	
07 = Baskerville	
08 = Baskerville italics	
09 = Brush Script	
10 = Brush Script italics	
11 = Monospace	
12 = Monospace italics	
17 = OCR-A	
18 = OCR-A italics	
19 = OCR-B	
20 = OCR-B italics	

dy	extension in direction Y bitmap fonts factor 0...9 vector fonts character size in 1/100 mm vector fonts autoscale field height
dx	extension in direction X bitmap fonts factor 0-9 vector fonts character size in 1/100 mm vector fonts autoscale field width
lp	distance between single characters in 1/100 mm
dp	datum point 1 = left top 2 = centre top 3 = right top 4 = left centre 5 = centre centre 6 = right centre 7 = left bottom (default) 8 = centre bottom 9 = right bottom

5.2 One-Dimensional Bar Code

AM[n]y;x;p;a;d;h;v1;v2;pz;z;dp	
A	identification for mask set
M	identification for protocol version
n	Field number
y	Y position in 1/100 mm
x	X position in 1/100 mm
p	identification for phantom field 0 = print 1 = no print
a	Identification for field type 30 = Code 39 31 = Code 2/5 interleaved 32 = EAN 8 33 = EAN 13 34 = UPC A 35 = UPC E 36 = CODABAR 37 = Code 128 38 = EAN ADD ON 39 = GS1-128 40 = Code 93 41 = PZN 7 42 = 2/5 Industrie 43 = Leitcode 44 = Identcode 46 = Code 39 extended 47 = Code 128 A 48 = Code 128 B 49 = Pharmacode 60 = PZN 8 62 = USPS Intelligent Mail 63 = POSTNET
d	Rotation 0 = 0° 1 = 90° 2 = 180° 3 = 270°
h	symbol height in 1/100 mm
v1	relation 1; module width 'THICK'
v2	relation 2; module width 'THIN' and/or SC factor
pz	check digit calculation 0 = no check digit calculation 1 = check digit calculation 4 = inverse - no check digit calculation 5 = inverse - check digit calculation
z	human readable line 0 = no human readable line 1 = with human readable line
dp	datum point 1 = left top 2 = centre top 3 = right top 4 = left centre 5 = centre centre 6 = right centre 7 = left bottom (default) 8 = centre bottom 9 = right centre

5.3 ITF Bar Code

AM[n];x;p;a;d;h;v1;v2;pz;z;dp	
A	identification for mask set
M	identification for protocol version
n	Field number
y	Y position in 1/100 mm
x	X position in 1/100 mm
p	identification for phantom field 0 = print 1 = no print
a	identification for field type 56 = ITF 14
d	rotation 0 = 0° 1 = 90° 2 = 180° 3 = 270°
h	symbol height in 1/100 mm
v1	relation 1; module width 'THICK'
v2	relation 2; module width 'THIN' and/or SC factor
pz	check digit calculation 0 = no check digit calculation 1 = check digit calculation 4 = inverse - no check digit calculation 5 = inverse - check digit calculation
z	human readable line 0 = no human readable line 1 = with human readable line
dp	datum point 1 = left top 2 = centre top 3 = right top 4 = left centre 5 = centre centre 6 = right centre 7 = left bottom (default) 8 = centre bottom 9 = right centre

In order to print the bearer bars of an ITF 14 barcode, the following additional properties for Code 2/5 interleaved must be set:

For this the following field properties are determined:

Property identifier	Description
BT	bearer bar type 0 = no bars 1 = above/below 2 = rectangle
BW	bearer bar width in 1/100 mm
QZ	quiet zone in 1/100 mm

Example

```
// BARCODE (1/100 mm)
(SOH) AM[1]4498;7076;0;31;2;3000;12;4;0;1;3 (ETB)
(SOH) AC [1] BT=2 ; BW=150 ; QZ=600 (ETB)
(SOH) BM[1] 1234567890123 (ETB)
```



5.4 PDF417

AM[n];x;p:a;d;s;rw;rh;ec;z;dp;c;r	
A	identification for mask set
M	identification for protocol version
n	Field number
y	Y position in 1/100 mm
x	X position in 1/100 mm
p	identification for phantom field 0 = print 1 = no print
a	identification for field type 50 = PDF417
d	rotation 0 = 0° 1 = 90° 2 = 180° 3 = 270°
s	symbol size
rw	relation width
rh	relation height
ec	error correction level 0 - ECC Level = 0 1 - ECC Level = 2 2 - ECC Level = 6 3 - ECC Level = 14 4 - ECC Level = 30 5 - ECC Level = 62 6 - ECC Level = 126 7 - ECC Level = 254 8 - ECC Level = 510
z	style 0 = standard 1 = truncated 2 = naked 3 = bare
dp	datum point 1 = left top 2 = centre top 3 = right top 4 = left centre 5 = centre centre 6 = right centre 7 = left bottom (default) 8 = centre bottom 9 = right bottom
c	number of columns 0 = automatic, 1-30
r	number of rows 0 = automatic, 3-90

5.5 MAXICODE

AM[n;y;x;p;a;d;0;sn;ns;m;0;dp	
A	identification for mask set
M	identification for protocol version
n	field number
y	Y position in 1/100 mm
x	X position in 1/100 mm
p	identification for phantom field 0 = print 1 = no print
a	identification for field type 51 = MAXICODE
d	rotation 0 = 0° 1 = 90° 2 = 180° 3 = 270°
0	dummy
sn	symbol number
ns	quantity of symbols
m	mode 2 = Structured Message (US Carrier) 3 = Structured Message (International Carrier) 4 = Default message
0	dummy
dp	datum point 1 = left top 2 = centre top 3 = right top 4 = left centre 5 = centre centre 6 = right centre 7 = left bottom (default) 8 = centre bottom 9 = right bottom

5.6 DataMatrix

AM[n;y;x;p;a;d;s;aw;ah;ec;f;dp																															
A	identification for mask set																														
M	identification for protocol version																														
n	field number																														
y	Y position in 1/100 mm																														
x	X position in 1/100 mm																														
p	identification for phantom field 0 = print 1 = no print																														
a	identification for field type 52 = DataMatrix																														
d	rotation 0 = 0° 1 = 90° 2 = 180° 3 = 270°																														
s	symbol size in 1/100 mm																														
aw	relation width																														
ah	relation height																														
ec	Error Correction <table border="0"> <tr> <td>0 - ECC Type = 0</td> <td>ECC Level = 0</td> <td>Overhead = 0 %</td> </tr> <tr> <td>1 - ECC Type = 2*</td> <td>ECC Level = 40</td> <td>Overhead = 33 %</td> </tr> <tr> <td>2 - ECC Type = 3</td> <td>ECC Level = 50</td> <td>Overhead = 25 %</td> </tr> <tr> <td>3 - ECC Type = 6</td> <td>ECC Level = 80</td> <td>Overhead = 33 %</td> </tr> <tr> <td>4 - ECC Type = 8</td> <td>ECC Level = 100</td> <td>Overhead = 50 %</td> </tr> <tr> <td>5 - ECC Type = 9*</td> <td>ECC Level = 110</td> <td>Overhead = 75 %</td> </tr> <tr> <td>6 - ECC Type = 10*</td> <td>ECC Level = 120</td> <td>Overhead = 50 %</td> </tr> <tr> <td>7 - ECC Type = 11*</td> <td>ECC Level = 130</td> <td>Overhead = 67 %</td> </tr> <tr> <td>8 - ECC Type = 12</td> <td>ECC Level = 140</td> <td>Overhead = 75 %</td> </tr> <tr> <td>9 - ECC Type = 26</td> <td>ECC Level = 200</td> <td>Overhead = 0 %</td> </tr> </table>	0 - ECC Type = 0	ECC Level = 0	Overhead = 0 %	1 - ECC Type = 2*	ECC Level = 40	Overhead = 33 %	2 - ECC Type = 3	ECC Level = 50	Overhead = 25 %	3 - ECC Type = 6	ECC Level = 80	Overhead = 33 %	4 - ECC Type = 8	ECC Level = 100	Overhead = 50 %	5 - ECC Type = 9*	ECC Level = 110	Overhead = 75 %	6 - ECC Type = 10*	ECC Level = 120	Overhead = 50 %	7 - ECC Type = 11*	ECC Level = 130	Overhead = 67 %	8 - ECC Type = 12	ECC Level = 140	Overhead = 75 %	9 - ECC Type = 26	ECC Level = 200	Overhead = 0 %
0 - ECC Type = 0	ECC Level = 0	Overhead = 0 %																													
1 - ECC Type = 2*	ECC Level = 40	Overhead = 33 %																													
2 - ECC Type = 3	ECC Level = 50	Overhead = 25 %																													
3 - ECC Type = 6	ECC Level = 80	Overhead = 33 %																													
4 - ECC Type = 8	ECC Level = 100	Overhead = 50 %																													
5 - ECC Type = 9*	ECC Level = 110	Overhead = 75 %																													
6 - ECC Type = 10*	ECC Level = 120	Overhead = 50 %																													
7 - ECC Type = 11*	ECC Level = 130	Overhead = 67 %																													
8 - ECC Type = 12	ECC Level = 140	Overhead = 75 %																													
9 - ECC Type = 26	ECC Level = 200	Overhead = 0 %																													
f	format ID of data 0 - Format ID = 11 (numeric, 2000 characters)* 1 - Format ID = 1 (numeric, 500 characters) 2 - Format ID = 2 (alphabetical, 500 characters) 3 - Format ID = 3 (alphabetical + pointers, 500 characters) 4 - Format ID = 4 (alphanumeric, 500 characters) 5 - Format ID = 5 (7 Bit, 500 characters) 6 - Format ID = 6 (8 Bit, 500 characters) 7 - Format ID = 7 (pre-programmed, 500 characters)* 8 - Format ID = 12 (alphabetical, 2000 characters) 9 - Format ID = 14 (alphanumeric, 2000 characters)																														
dp	datum point 1 = left top 2 = centre top 3 = right top 4 = left centre 5 = centre centre 6 = right centre 7 = left bottom (default) 8 = centre bottom 9 = right bottom																														

* not supported from printer

5.7 GS1 DataMatrix

AM[n;y;x;p;a;d;s;aw;ah;ec;f;dp																															
A	identification for mask set																														
M	identification for protocol version																														
n	field number																														
y	Y position in 1/100 mm																														
x	X position in 1/100 mm																														
p	identification for phantom field 0 = print 1 = no print																														
a	identification for field type 59 = GS1 DataMatrix																														
d	rotation 0 = 0° 1 = 90° 2 = 180° 3 = 270°																														
s	symbol size in 1/100 mm																														
aw	relation width																														
ah	relation height																														
ec	Error Correction <table style="width: 100%; border-collapse: collapse;"> <tr> <td style="width: 33%;">0 - ECC Type = 0</td> <td style="width: 33%;">ECC Level = 0</td> <td style="width: 33%;">Overhead = 0 %</td> </tr> <tr> <td>1 - ECC Type = 2*</td> <td>ECC Level = 40</td> <td>Overhead = 33 %</td> </tr> <tr> <td>2 - ECC Type = 3</td> <td>ECC Level = 50</td> <td>Overhead = 25 %</td> </tr> <tr> <td>3 - ECC Type = 6</td> <td>ECC Level = 80</td> <td>Overhead = 33 %</td> </tr> <tr> <td>4 - ECC Type = 8</td> <td>ECC Level = 100</td> <td>Overhead = 50 %</td> </tr> <tr> <td>5 - ECC Type = 9*</td> <td>ECC Level = 110</td> <td>Overhead = 75 %</td> </tr> <tr> <td>6 - ECC Type = 10*</td> <td>ECC Level = 120</td> <td>Overhead = 50 %</td> </tr> <tr> <td>7 - ECC Type = 11*</td> <td>ECC Level = 130</td> <td>Overhead = 67 %</td> </tr> <tr> <td>8 - ECC Type = 12</td> <td>ECC Level = 140</td> <td>Overhead = 75 %</td> </tr> <tr> <td>9 - ECC Type = 26</td> <td>ECC Level = 200</td> <td>Overhead = 0 %</td> </tr> </table>	0 - ECC Type = 0	ECC Level = 0	Overhead = 0 %	1 - ECC Type = 2*	ECC Level = 40	Overhead = 33 %	2 - ECC Type = 3	ECC Level = 50	Overhead = 25 %	3 - ECC Type = 6	ECC Level = 80	Overhead = 33 %	4 - ECC Type = 8	ECC Level = 100	Overhead = 50 %	5 - ECC Type = 9*	ECC Level = 110	Overhead = 75 %	6 - ECC Type = 10*	ECC Level = 120	Overhead = 50 %	7 - ECC Type = 11*	ECC Level = 130	Overhead = 67 %	8 - ECC Type = 12	ECC Level = 140	Overhead = 75 %	9 - ECC Type = 26	ECC Level = 200	Overhead = 0 %
0 - ECC Type = 0	ECC Level = 0	Overhead = 0 %																													
1 - ECC Type = 2*	ECC Level = 40	Overhead = 33 %																													
2 - ECC Type = 3	ECC Level = 50	Overhead = 25 %																													
3 - ECC Type = 6	ECC Level = 80	Overhead = 33 %																													
4 - ECC Type = 8	ECC Level = 100	Overhead = 50 %																													
5 - ECC Type = 9*	ECC Level = 110	Overhead = 75 %																													
6 - ECC Type = 10*	ECC Level = 120	Overhead = 50 %																													
7 - ECC Type = 11*	ECC Level = 130	Overhead = 67 %																													
8 - ECC Type = 12	ECC Level = 140	Overhead = 75 %																													
9 - ECC Type = 26	ECC Level = 200	Overhead = 0 %																													
f	format ID of data 0 - Format ID = 11 (numeric, 2000 characters)* 1 - Format ID = 1 (numeric, 500 characters) 2 - Format ID = 2 (alphabetical, 500 characters) 3 - Format ID = 3 (alphabetical + pointers, 500 characters) 4 - Format ID = 4 (alphanumeric, 500 characters) 5 - Format ID = 5 (7 Bit, 500 characters) 6 - Format ID = 6 (8 Bit, 500 characters) 7 - Format ID = 7 (pre-programmed, 500 characters)* 8 - Format ID = 12 (alphabetical, 2000 characters) 9 - Format ID = 14 (alphanumeric, 2000 characters)																														
dp	datum point 1 = left top 2 = centre top 3 = right top 4 = left centre 5 = centre centre 6 = right centre 7 = left bottom (default) 8 = centre bottom 9 = right bottom																														

* not supported from printer

5.8 CODABLOCK F

AM[n]y;x;p;a;d;h;nc;nl;m;s;dp	
A	identification for mask set
M	identification for protocol version
n	field number
y	Y position in 1/100 mm
x	X position in 1/100 mm
p	identification for phantom field 0 = printout 1 = np printout
a	identification for field type 53 = CODABLOCK F
d	rotation 0 = 0° 1 = 90° 2 = 180° 3 = 270°
h	line height in symbol
nc	quantity of characters/line
nl	quantity of lines
m	mode
s	module size
dp	datum point 1 = left top 2 = centre top 3 = right top 4 = left centre 5 = centre centre 6 = right centre 7 = left bottom (default) 8 = centre bottom 9 = right bottom

5.9 GS1 DataBar (RSS Code)

AM[n]y;x;p;a;d;s;m;k;t;0;dp	
A	identification for mask set
M	identification for protocol version
n	field number
y	Y position in 1/100 mm
x	X position in 1/100 mm
p	identification for phantom field 0 = print 1 = no print
a	identification for field type 54 = GS1 DataBar (RSS)
d	rotation 0 = 0° 1 = 90° 2 = 180° 3 = 270°
s	number of segments per line [2...22]
m	module width [1 ...12]
k	separator height [1,2]
t	symbol type 1 = GS1 DataBar Omnidirectional (RSS-14) 2 = GS1 DataBar Truncated (RSS-14 Truncated) 3 = GS1 DataBar Stacked (RSS-14 Stacked) 4 = GS1 DataBar Stacked Omnidirectional (RSS-14 Stacked Omnidirectional) 5 = GS1 DataBar Limited (RSS Limited) 6 = GS1 DataBar Expanded (RSS Expanded)
0	not used
dp	datum point 1 = left top 2 = centre top 3 = right top 4 = left centre 5 = centre centre 6 = right centre 7 = left bottom (default) 8 = centre bottom 9 = right bottom

5.10 QR Code

AM[n;y;x;p;a;d;mo;cs;ms;cw;ec;dp]	
A	identification for mask set
M	identification for protocol version
n	field number
y	Y position in 1/100 mm
x	X position in 1/100 mm
p	identification for phantom field 0 = print 1 = no print
a	identification for field type 57 = QR Code
d	rotation 0 = 0° 1 = 90° 2 = 180° 3 = 270°
mo	code model 1 = Code Model 1 2 = Code Model 2
cs	character set N = numeric A = alphanumeric B = 8-bit byte K = kanji
ms	masking -1 = auto 0-7 = mask x 8 = no masking
cw	line width in 1/100 mm per module possible values: 0-800
ec	error correction (restoring capacity) L = 7 % M = 15 % Q = 25 % H = 30 %
dp	datum point 1 = left top 2 = centre top 3 = right top 4 = left centre 5 = centre centre 6 = right centre 7 = left bottom (default) 8 = centre bottom 9 = right bottom

5.11 Aztec Code

AM[n]y;x;p;a;d;h;f;ec;m;0;dp																																							
A	identification for mask set																																						
M	identification for protocol version																																						
n	field number																																						
y	Y position in 1/100 mm																																						
x	X position in 1/100 mm																																						
p	identification for phantom field 0 = print 1 = no print																																						
a	identification for field type 61 = Aztec Code																																						
d	rotation 0 = 0° 1 = 90° 2 = 180° 3 = 270°																																						
h	symbol size in 1/100 mm (max 1 cm)																																						
f	format <table style="width: 100%; border: none;"> <tr> <td>0 = Auto</td> <td>19 = C79xC79</td> </tr> <tr> <td>1 = C15xC15 Compact</td> <td>20 = C83xC83</td> </tr> <tr> <td>2 = C19xC19 Compact</td> <td>21 = C87xC87</td> </tr> <tr> <td>3 = C23xC23 Compact</td> <td>22 = C91xC91</td> </tr> <tr> <td>4 = C27xC27 Compact</td> <td>23 = C95xC95</td> </tr> <tr> <td>5 = C19xC19</td> <td>24 = C101xC101</td> </tr> <tr> <td>6 = C23xC23</td> <td>25 = C105xC105</td> </tr> <tr> <td>7 = C27xC27</td> <td>26 = C109xC109</td> </tr> <tr> <td>8 = C31xC31</td> <td>27 = C113xC113</td> </tr> <tr> <td>9 = C37xC37</td> <td>28 = C117xC117</td> </tr> <tr> <td>10 = C41xC41</td> <td>29 = C121xC121</td> </tr> <tr> <td>11 = C45xC45</td> <td>30 = C125xC125</td> </tr> <tr> <td>12 = C49xC49</td> <td>31 = C131xC131</td> </tr> <tr> <td>13 = C53xC53</td> <td>32 = C135xC135</td> </tr> <tr> <td>14 = C57xC57</td> <td>33 = C139xC139</td> </tr> <tr> <td>15 = C61xC61</td> <td>34 = C143xC143</td> </tr> <tr> <td>16 = C67xC67</td> <td>35 = C147xC147</td> </tr> <tr> <td>17 = C71xC71</td> <td>36 = C151xC151</td> </tr> <tr> <td>18 = C75xC75</td> <td></td> </tr> </table>	0 = Auto	19 = C79xC79	1 = C15xC15 Compact	20 = C83xC83	2 = C19xC19 Compact	21 = C87xC87	3 = C23xC23 Compact	22 = C91xC91	4 = C27xC27 Compact	23 = C95xC95	5 = C19xC19	24 = C101xC101	6 = C23xC23	25 = C105xC105	7 = C27xC27	26 = C109xC109	8 = C31xC31	27 = C113xC113	9 = C37xC37	28 = C117xC117	10 = C41xC41	29 = C121xC121	11 = C45xC45	30 = C125xC125	12 = C49xC49	31 = C131xC131	13 = C53xC53	32 = C135xC135	14 = C57xC57	33 = C139xC139	15 = C61xC61	34 = C143xC143	16 = C67xC67	35 = C147xC147	17 = C71xC71	36 = C151xC151	18 = C75xC75	
0 = Auto	19 = C79xC79																																						
1 = C15xC15 Compact	20 = C83xC83																																						
2 = C19xC19 Compact	21 = C87xC87																																						
3 = C23xC23 Compact	22 = C91xC91																																						
4 = C27xC27 Compact	23 = C95xC95																																						
5 = C19xC19	24 = C101xC101																																						
6 = C23xC23	25 = C105xC105																																						
7 = C27xC27	26 = C109xC109																																						
8 = C31xC31	27 = C113xC113																																						
9 = C37xC37	28 = C117xC117																																						
10 = C41xC41	29 = C121xC121																																						
11 = C45xC45	30 = C125xC125																																						
12 = C49xC49	31 = C131xC131																																						
13 = C53xC53	32 = C135xC135																																						
14 = C57xC57	33 = C139xC139																																						
15 = C61xC61	34 = C143xC143																																						
16 = C67xC67	35 = C147xC147																																						
17 = C71xC71	36 = C151xC151																																						
18 = C75xC75																																							
ec	error correction (only if format = 0) 1 = 10 % 2 = 23 % 3 = 36 % 4 = 50 %																																						
m	mode 0 = data 1 = runes (figures 0-255) 2 = Unicode (8 Bit ASCII) 3 = GS1 (not yet available)																																						
0	dummy																																						
dp	datum point 1 = left top 2 = centre top 3 = right top 4 = left centre 5 = centre centre 6 = right centre 7 = left bottom (default) 8 = centre bottom 9 = right bottom																																						

5.12 Rectangle

AM[n]y;x;p;a;h;b;s;m;dp	
A	identification for mask set
M	identification for protocol version
n	field number
y	Y position in 1/100 mm
x	X position in 1/100 mm
p	identification for phantom field 0 = print 1 = no print
a	identification for field type 10 = rectangle
h	rectangle height in 1/100 mm
b	rectangle height in 1/100 mm
s	line width in 1/100 mm
m	line type; 1 digit
dp	datum point 1 = left top 2 = centre top 3 = right top 4 = left centre 5 = centre centre 6 = right centre 7 = left bottom (default) 8 = centre bottom 9 = right bottom

5.13 Line

AM[n]y;x;p;a;d;l;s;m;dp	
A	identification for mask set
M	identification for protocol version
n	field number
y	Y position in 1/100 mm
x	X position in 1/100 mm
p	identification for phantom field 0 = printout 1 = no printout
a	identification for field type 11 = line
d	rotation 0 = horizontal 1 = vertical
l	length in 1/100 mm
s	line width in 1/100 mm
m	line type; 1 digit
dp	datum point 1 = left top 2 = centre top 3 = right top 4 = left centre 5 = centre centre 6 = right centre 7 = left bottom (default) 8 = centre bottom 9 = right bottom

5.14 Internal Graphic

AM[n]y;x;p;a;d;dy;dx;dp	
A	identification for mask set
M	identification for protocol version
n	field number
y	Y position in 1/100 mm
x	X position in 1/100 mm
P	identification for phantom field 0 = print 1 = no print
a	identification for field type 3 = internal graphic
d	rotation 0 = 0° 1 = 90° 2 = 180° 3 = 270°
dy	rotation in direction Y
dx	rotation in direction X
dp	datum point 1 = left top 2 = centre top 3 = right top 4 = left centre 5 = centre centre 6 = right centre 7 = left bottom (default) 8 = centre bottom 9 = right bottom

6 Text Set

BM[n]text	
B	identification for text set
M	identification for extended protocol
n	field number
text	data contents, text

BV[n]text	
B	identification for text set
V	identification for selection by field name
n	field name
text	data contents, text

BF[n]text	
B	identification for text set
F	identification for selection by free definable field number
n	field number
text	data contents, text

6.1 Examples

Mask set

Mask statement	[SOH]AM[1]2000;4000;0;1;0;2;1;1;0[ETB]
field number	_____
y position 20 mm	_____
x position 40 mm	_____
no phantom field	_____
bitmap font	_____
position 0	_____
font 2	_____
extension in y direction 1	_____
extension in x direction 1	_____
no blank pixel	_____

Texts set

Text statement	[SOH]BM[1]this is a test [ETB]
field number 1	_____
text "this is a test"	_____

Text set with variable definition:

[SOH]BM[125]=CN(0,0,3,1,1)000[ETB]

Example label

ASCII data	Identification
⊗AM[1]3600;4600;0;33;0;1500;0;4;1;1⊕ ^{C_R} ⊕ ^{L_F}	mask set for bar code
⊗BM[1]4444444444444⊕ ^{C_R} ⊕ ^{L_F}	appropriate text set
⊗AM[2]600;4700;0;4;0;1;300;200;24⊕ ^{C_R} ⊕ ^{L_F}	five mask sets vector font / proportional font
⊗AM[3]600;3100;0;4;0;1;400;300;24⊕ ^{C_R} ⊕ ^{L_F}	
⊗AM[4]1100;4700;0;4;0;1;400;300;24⊕ ^{C_R} ⊕ ^{L_F}	
⊗AM[5]1800;4700;0;4;0;1;300;200;24⊕ ^{C_R} ⊕ ^{L_F}	
⊗AM[6]1900;3700;0;4;0;1;600;400;24⊕ ^{C_R} ⊕ ^{L_F}	
⊗BM[2]Art.Nr. ⊕ ^{C_R} ⊕ ^{L_F}	five appropriate text sets
⊗BM[3]444444⊕ ^{C_R} ⊕ ^{L_F}	
⊗BM[4]Artikelbezeichnung⊕ ^{C_R} ⊕ ^{L_F}	
⊗BM[5]DM⊕ ^{C_R} ⊕ ^{L_F}	
⊗BM[6]99,-- ⊕ ^{C_R} ⊕ ^{L_F}	
⊗FBA000r06000000⊕	number of lines
⊗FBBA00r00001000⊕	number of items
⊗FBC000r00000000⊕	start

: graphic data in PCX format

⊗: SOH (1_{hex} bzw 5E_{hex})

⊕: ETB (17_{hex} bzw. 5F_{hex})

^{C_R}: CarriageReturn (0D_{hex})

^{L_F}: LineFeed (0A_{hex})

7 Graphic Set

7.1 General Graphic Format

This format is supported by all our printers but note that a 8 bit transmission is absolute necessary.

```
SOH D p p p p lb lb lb b b b gb..... ETB
```

		min.		max.	
D	=	identification for graphic set			
p	=	pixel line from above		'0000'	'1900'
lb	=	1. byte from left		'000'	'100'
b	=	quantity of bytes		'1'	'100'
gb	=	graphic bytes			

Graphic byte



1 graphic bit = 0,083 x 0,083 mm

7.2 Graphic in PCX Format

It is possible to transfer graphic data as a PCX-file (e.g. PaintBrush) to the printer. With this type of data transfer the PCX-file is transferred in a compressed form. Hereby the RLE-procedure is used and therefore the graphic data were reduced by approx. 30 %. This means that the effective transferring time for 300 dpi printers is cut in halves.

To set the printer ready for receiving PCX-data the protocol has to be switched over and hereby the following command set will be defined:

```
SOH A X n n n y y y y y x x x x x m dp ETB
```

n	Index of transferred graphic to printer internal maintenance at present not processed (000)		
y	Y coordinate of graphic in 1/100 mm		
x	X coordinate of graphic in 1/100 mm		
m	Mode 0 = standard (background is overwritten) Mode 1 = transparency (background is maintained) Mode 2 = inverse (background is overwritten) Mode 3 = inverse transparency (background is maintained)		
dp	datum point	1 = left top	2 = centre top
		4 = left centre	5 = centre centre
		7 = left bottom (default)	8 = centre bottom
			3 = right top
			6 = right centre
			9 = right bottom

- It is recommended to observe that directly after the final sign (ETB) no separator res. fill character such as $C_R L_F$ is indicated.
- The printer supports the following PCX versions: 5, 3, 2 and 0.
- It is necessary that the corresponding PCX-file is available as monochrome (black/white).
- The graphic has to be available in the original size as the printer is not able to change the size by itself.



NOTICE!

Before print start, indicated by parameter set 'FBC', the definition of field number, lines and pieces has to be effected via the parameter sets (FBA res. FBB).

7.3 Example PCX File

-*** PCX_GRAPHIC-INFO ***-

⊗AX0010015300100941⊕#####	
⊗AM[1]3600;4600;0;33;0;1500;0;4;1;1⊕ $C_R L_F$	mask set for bar code
⊗BM[1]444444444444⊕ $C_R L_F$	appropriate text set
⊗AM[2]600;4700;0;4;0;1;300;200;24⊕ $C_R L_F$	five mask set vector font / proportional font
⊗AM[3]600;3100;0;4;0;1;400;300;24⊕ $C_R L_F$	
⊗AM[4]1100;4700;0;4;0;1;400;300;24⊕ $C_R L_F$	
⊗AM[5]1800;4700;0;4;0;1;300;200;24⊕ $C_R L_F$	
⊗AM[6]1900;3700;0;4;0;1;600;400;24⊕ $C_R L_F$	
⊗BM[2]Art.Nr. ⊕ $C_R L_F$	five appropriate text sets
⊗BM[3]44444⊕ $C_R L_F$	
⊗BM[4]Artikelbezeichnung⊕ $C_R L_F$	
⊗BM[5]DM⊕ $C_R L_F$	
⊗BM[6]99,-- ⊕ $C_R L_F$	
⊗FBA00r06000000⊕	set number of lines (FBA...)
⊗FBBA00r00001000⊕	set quantity (FBBA...)
⊗FBC000r00000000⊕	start print order (FBC...)

- # : Grafikdaten im PCX Format
- ⊗: SOH (1_{hex} bzw 5E_{hex})
- ⊕: ETB (17_{hex} bzw. 5F_{hex})
- C_R : CarrigeReturn (0D_{hex})
- L_F : LineFeed (0A_{hex})

8 Variables

8.1 Set Structure

```
SOH BM [n] = v v ( p1 p2 p... pn ) t1 t2 t... t70 ETB
```

= start of function
 vv variable type
 SC link field
 CN counter
 CC extended counter
 CL date/time
 CU currency variable
 SH shift variable
 MD memory card data
 (start of variable parameter block
 p1...pn variable parameter
) end of variable parameter block



NOTICE!

In case you want to print a text which corresponds exactly to the variable definition then you have to place '!' before.

```
SOH BM [n] ! = v v ( p1 p2 p... pn ) t1 t2 t... t70 ETB
```

8.2 Link Field

```
SOH BM [n] = S C ( p1 ; p2 ; p... ; pn ) t1 t2 t... t70 ETB
```

= SC identification of link field
 p1...pn identification of link elements (field number or constant text)
 field number is entered without leading '0'
 constant text is included in " but these marks are not printed



NOTICE!

Reference fields can be constant text or variables but no link fields.

Example

=SC(1;2;3) --> Printout: Field1Field2Field3

=SC(1;"constant";2) --> Printout: Field1constantField2

8.3 Counter

SOH	BM	[n]	=	C	N	(t	;	m	;	c	;	+/-	s	;	i	;	h	;	r)	t1	t2	t...	t70	ETB
-----	----	-----	---	---	---	---	---	---	---	---	---	---	-----	---	---	---	---	---	---	---	---	----	----	------	-----	-----

= CN	identification counter
t	type of counter
0	numerical
1	letters only
2...36	radix, base of the counter
m	function mode
0	standard
1	return to start value
2	enter the start value at the beginning of printing (default = existing start value)
3	enter the start value at the beginning of printing (default = last final number)
4	reset start value at cycle end (only for DPM IIIi)
5	reset start value by I/O signal
6	time-controlled resetting
7	time-controlled resetting with input of initial value (default = last final value)
c	digit where the numbering starts counting
+/-	direction
+	adding
-	subtracting
s	step width
i	update interval (number of labels with identical number)
h	time by which the counter is reset (function mode 6 and 7) in format 'HH:MM' e.g. 00:00 = reset counter at 0:00 (optional, only for function mode 6 and 7)
r	reset value (optional, only for function mode 6 and 7; default = text and/or initial value)
	Limitation: The time-controlled resetting of counter variable is only effected in case of an active print order. If a print order is cancelled before the specified time and afterwards again restarted then no resetting of counter value is effected.
t1, t2, ...	text res. start value of counter

Example:

Input: =CN(10;7;4;+1;1;06:00;0001)1234

The enquiry for the initial value is effected at print start and at 6:00 the counter variable is reset to value 0001.

8.4 Extended Counter

SOH	BM	[n]	=	C	C	(+/-	s	;	i	;	m	;	z	;	n	;	x)	t	ETB
-----	----	-----	---	---	---	---	-----	---	---	---	---	---	---	---	---	---	---	---	---	---	-----

= CC identification of numeric counter

+/- direction
 + counter adding
 - counter subtracting

s step width

i update interval
 (number of labels with identical number)

m function mode
 0 standard
 1 return to start value
 2 enter the start value at the beginning of printing
 (default = existing start value)
 3 enter the start value at the beginning of printing
 (default = last final number)
 4 reset start value at cycle end
 (only for DPM IIIi)
 5 set min. / max. value
 6 set start value
 7 print end

z leading zeros
 0 no leading zeros
 1 printout with leading zeros

n minimum value (max. -999999999)

x maximum value (max. 999999999)

t start value
 (the number of digits determines the format for the printout with leading zeros
 (max. 999999999)

Example:

Input: =CC(+1;2;5;0;1,999)0050

Printout: 50, 51,...999, 1, 2, ...

8.5 Date and Time

```
SOHBM[n]=CL(m;d;i;n;c;mo;pd;pm;md;mm;rw;ws)t1t...t70ETB
```

= CL identification date/time

m month offset to the actual date

d day offset to the actual date

i update interval

(0 = at the beginning of a print order, 1 = each label)

Optional parameters

n minute offset to the actual time
(negative entry/value possible)

c correction month overflow
(0 = change to the next month, 1 = remain in current month)

Optional parameters for BBE date

mo input mode

0: standard; display current date of real time clock

1: display calculated date, modification possible

2: display calculated date, no modification possible

pd max. positive correction days

pm max. positive correction months

md max. negative correction days

mm max. negative correction months

Optional parameters for rounded date

rw rounded weekday: 1 = Sunday ... 7 = Saturday; 0 = no rounding

ws start of week, format: "D-HH:MM",
e.g. 1-00:00 = Sunday, 0:00 Uhr

Example

Actual date as per Real Time Clock: 22.01.10

Input: =CL(0;0;0)<DD.MO.> Printout: 08.12.

Input: =CL(2;1;0)<DD.MO.> Printout: 09.02.

Example for BBE date

Input: =CL(0;0;0;0;0;1;3;2;3;2)<DD.MO.>

At print start the calculated date is displayed at the printer and can be modified (+/- 3 days and +/- 2 months):

Display: ID_1 DD:MO:YY
08.12.11

Example for rounded date

The beginning of the week is on Sunday (08.12.) at 00:00. The date of Monday should be printed the whole week.

Input: =CL(0;0;0;0;0;0;0;0;0;0;2;1-00:00)<DD.MO.>

Current date	Rounded date
07.12. 23:59:59	02.12.
08.12. 00:00:00	09.12.
09.12.	09.12.
14.12. 23:59:59	09.12.
15.12. 00:00:00	16.12.

8.6 Format Identifier (Date & Time)

Standard format	
HH	Hours 2-digit (24 hours)
HE	Hours 2-digit (12 hours)
MI	Minutes 2-digit
SS	Seconds 2-digit
AM	AM/PM output
DD	Day 2-digit
MO	Month 2-digit
YYYY	Year 4-digit
YY	Year 2-digit
Y	Year 1-digit
WW	Calendar week
DW	Day of week (Sunday = 0)
DW1	Day of week (Sunday = 1)
DwX	Day of week An arbitrary ASCII character can be used for x, from which it is counted consecutively
DOWxxxxxxx	Day of week - variable For x, any ASCII character can be used The first ,x' denominates Sunday, the next denominates Monday and so on until Saturday For each weekday a character must be created
DOY	Day of year 3-digit (First January = 1)
DY	Day of year 3-digit (First January = 0)
Examples	
DD.MO.YY	22.01.10
MO/DD/YYYY	01/22/2010
YY-MO-DD	10-01-22
YYMODD	100122

The format identifier 'HE' and 'AM'/'am'/'Am' are supplemented. Therefore the output of hours in 12-hours mode is possible. By the additional output of format identifier 'AM' the output of time in american/english format is possible.

Example

```
=CL(0;0;0;0)<HH:MI:SS>      --> 15:30:00
=CL(0;0;0;0)<HE:MI:SS>      --> 03:30:00
=CL(0;0;0;0)<HE:MI:SS AM>   --> 03:30:00 PM
=CL(0;0;0;0)<HE:MI:SS am>   --> 03:30:00 pm
=CL(0;0;0;0)<HE:MI:SS Am>   --> 03:30:00 p.m.
```

By separating the output of time and AM/PM output in 2 text fields, also the following output format is possible:

```
--> 03:30:00 pm
```

Extended format	
XMO	Name of month short
XSO	Name of month long
XSD	Weekday short
XLD	Weekday long
For X you can enter the country identification of desired language	
C = Canadian D = Danish E = English F = French G = German I = Italian N = Dutch O = Norwegian S = Spanish U = Finnish W = Swedish	
Examples:	
DD.EMO.YY	22.JAN.10
DD.ESO YYYY	22. January 2010
ELD,DD.GMO.YY	Friday, 22. JAN.10
ESD,DD.MO.YY	FR, 22.01.10

Extended format - XMO

C	JA	FE	MR	AL	MA	JN	JL	AU	SE	OC	NO	DE
D	JAN	FEB	MAR	APR	MAJ	JUN	JUL	AUG	SEP	OKT	NOV	DEC
E	JAN	FEB	MAR	APR	MAY	JUN	JUL	AUG	SEP	OCT	NOV	DEC
F	JAN	FEV	MAR	AVR	MAI	JUIN	JUIL	AOU	SEP	OCT	NOV	DEC
G	JAN	FEB	MRZ	APR	MAI	JUN	JUL	AUG	SEP	OKT	NOV	DEZ
I	GEN	FEB	MAR	APR	MAG	GIU	LUG	AGO	SET	OTT	NOV	DIC
N	JAN	FEB	MRT	APR	MEI	JUN	JUL	AUG	SEP	OKT	NOV	DEC
O	JAN	FEB	MAR	APR	MAI	JUN	JUL	AUG	SEP	OKT	NOV	DES
S	ENE	FEB	MAR	ABR	MAY	JUN	JUL	AGO	SEP	OCT	NOV	DIC
U	TAM	HEL	MAA	HUH	TOU	KES	HEI	ELO	SYU	LOK	MAR	JOU
W	JAN	FEB	MAR	APR	MAJ	JUN	JUL	AUG	SEP	OKT	NOV	DEC

Extended format - XSO

C	January	February	March	April	May	June
D	Januar	Februar	Marts	April	Maj	Juni
E	January	February	March	April	May	June
F	Janvier	Février	Mars	Avril	Mai	Juin
G	Januar	Februar	Maerz	April	Mai	Juni
I	Gennaio	Febbraio	Marzo	Aprile	Maggio	Giugno
N	Januari	Februari	Maart	April	Mei	Juni
O	Januar	Februar	Mars	April	Mai	Juni
S	Enero	Febrero	Marzo	Abril	Mayo	Junio
U	Tammikuu	Helmikuu	Maaliskuu	Huhtikuu	Toukokuu	Kesaekuu
W	Januari	Februari	Mars	April	Maj	Juni

C	July	August	September	October	November	December
D	Juli	August	September	Oktober	November	December
E	July	August	September	October	November	December
F	Juillet	Août	Septembre	Octobre	Novembre	Décembre
G	Juli	August	September	Oktober	November	Dezember
I	Luglio	Agosto	Settembre	Ottobre	Novembre	Dicembre
N	Juli	Augustus	September	Oktober	November	December
O	Juli	August	September	Oktober	November	Desember
S	Julio	Agosto	Septiembre	Octubre	Noviembre	Diciembre
U	Heinaekuu	Elokuu	Syyskuu	Lokakuu	Marraksuu	Joulukuu
W	Juli	Augusti	September	Oktober	November	December

Extended format - XSD

C	SUN	MON	TUE	WED	THU	FRI	SAT
D	SO	MA	TI	ON	TO	FR	LO
E	SUN	MON	TUE	WED	THU	FRI	SAT
F	DIM	LUN	MAR	MER	JEU	VEN	SAM
G	SO	MO	DI	MI	DO	FR	SA
I	DOM	LUN	MAR	MER	GIO	VEN	SAB
N	ZO	MA	DI	WO	DO	VR	ZA
O	SO	MA	TI	ON	TO	FR	LO
S	DOM	LUN	MAR	MIE	JUE	VIE	SAB
U	SU	MA	TI	KE	TO	PE	LA
W	SO	LA	TI	ON	TO	FR	LO

Extended format - XLD

C	Sunday	Monday	Tuesday	Wednesday	Thursday	Friday	Saturday
D	Søndag	Mandag	Tirsdag	Onsdag	Torsdag	Fredag	Lørdag
E	Sunday	Monday	Tuesday	Wednesday	Thursday	Friday	Saturday
F	Dimanche	Lundi	Mardi	Mercredi	Jeudi	Vendredi	Samedi
G	Sonntag	Montag	Dienstag	Mittwoch	Donnerstag	Freitag	Samstag
I	Domenica	Lunedì	Martedì	Mercoledì	Giovedì	Venerdì	Sabato
N	Zondag	Maandag	Dinsdag	Woensdag	Donderdag	Vrijdag	Zaterdag
O	Søndag	Mandag	Tirsdag	Onsdag	Torsdag	Fredag	Lørdag
S	Domingo	Lunes	Martes	Miércoles	Jueves	Viernes	Sábado
U	Sunnuntai	Maanantai	Tiistai	Keski-viikko	Torstai	Perjantai	Lauantai
W	Söndag	Måndag	Tisdag	Onsdag	Torsdag	Fredag	Lördag

8.7 Currency Variable

SOH	BM	[n]	=	C	U	(a	;	b	;	c	;	d	;	e	;	f	;	g)	t1	t2	t...	t70	ETB
-----	----	-----	---	---	---	---	---	---	---	---	---	---	---	---	---	---	---	---	---	---	----	----	------	-----	-----

= CU Signification of variable Euro

a ANSI-Code of thousand separator as decimal figure

b ANSI-Code of comma separator as decimal figure

c Quantity of numbers after the comma as decimal figure

d Operand A Before the processing the variable Euro

e Operand B calculates the term

f Operand C $\frac{A \times B}{C}$

g Rounding format

t1, t2, ... Format string, is indicated by "< >"

Example:

In case the contents of field 20 has to be converted from USD into EUR the definition of variable for the user defined format is as follows:

B01 '=CU(46;44;2;20;"1,0";"0,68861";"0,01")Result: <>Euro'

B20 1.250,44 USD

Printout: 1.250,44 USD

Result: 1.815,89 Euro'

8.8 Shift Variable

```
SOH BM [n] = S H ( ) t1 t2 t... t70 ETB
```

= SH identification of shift variable



NOTICE!

The shift variable did not need any parameters. The settings for the output are defined with the corresponding parameter sets. (see above)

Beispiel

The shift times are defined: 00:00 - 11:59 "Shift1"
 12:00 - 23:59 "Shift2"

```
=SH() Printout at 10:00 Uhr: "Shift1"
=SH() Printout at 13:00 Uhr: "Shift2"
```

Set shift times

```
SOH F C I D - - r N N H H M M h h m m ETB
```

NN = ID [01 ... 24]
 HH = start hour
 MM = start minute
 hh = end hour
 mm = end minute

Enquire shift variable

```
SOH F C I D - - w N N p p p p p p p p p p ETB
```

Answer

```
SOH A N N H H M M h h m m p p p p p p p p ETB
```

Set shift text

```
SOH F C I E - - r N N T T T T T T T T T T ETB
```

NN = ID [01 ... 10]
 T = max. 24 characters

Enquire shift variable

```
SOH F C I E - - w N N p p p p p p p p ETB
```

Answer

```
SOH A N N ; T T T T T T T T T T ; p p p p p p p p ETB
```

8.9 User Guiding

```
SOH BM [n] = U G ( c ; t ; m ; ap ; ae ; sp ) t1 t2 t... t70 ETB
```

= UG identification user guiding

c start position for the entry

t type of entry
 0 numerical
 1 alphanumerical

m mode of entry
 0 do not jump over special characters
 1 jump over special characters

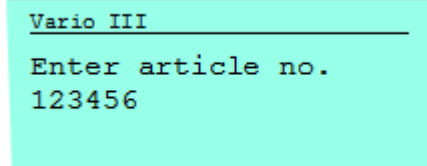
ap alignment at printing
 0 aligned to the right side

ae alignment at entry
 0 aligned to the right side

sp prompt text for the variable, max. 24 characters
 The entry has to be included in ".

Example

Entry: =UG(1;0;0;0;0;"Enter article no.")<123456>
 Display:



```
Vario III
-----
Enter article no.
123456
```

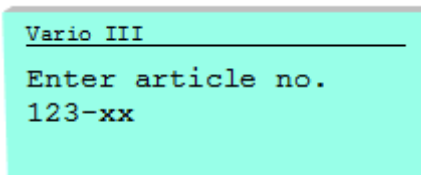
8.10 User Guiding with Mask

```
SOH|BM|[n]=UM(c;t;m;ap;ae;sp;d;ma)t1t2t...t70|ETB
```

- = UM identification user guiding with mask
- c start position for the entry
- t type of entry (is ignored with existing mask definition)
 - 0 numerical
 - 1 alphanumerical
- m mode of entry (is ignored with existing mask definition)
 - 0 do not jump over special characters
 - 1 jump over special characters
- ap alignment at printing
 - 0 aligned to the right side
- ae alignment at entry
(always left aligned with existing mask definition)
 - 0 right aligned
 - 1 left aligned, cursor at the beginning of the text
 - 2 left aligned, cursor at the start position
 - 3 right aligned, remove fill characters
 - 4 left aligned, cursor at the beginning of the text,
remove fill characters
 - 5 left aligned, cursor at the start position,
remove fill characters
- sp prompt text for the variable, max. 24 characters
The entry has to be included in ".
- d deleting setpoint value
 - 0 setpoint value remains at key entry (inserting mode)
 - 1 with first key press the setpoint value disappears
 - 2 setpoint value is retained (overwrite mode)
- ma definition of mask
possible mask characters are
 - 9 numbers only
 - # only numbers and leading signs
 - ? letters only
 - a alphanumeric characters (letters and numbers)
 - C any characters

Example

Entry: =UM(1;0;0;0;0;"Enter article no.";0;"999-aa")<123-xx>
 Display:



```
Vario III
-----
Enter article no.
123-xx
```

8.11 Memory Card Data

```
SOHBM[n]=MD(FN="filename";SE='x';CH=x;SC="x";SF="x";RC="x")ETB
```

= MD	identification of memory card data
FN	file name of table onto memory card with CSV data
SE	Separator sign (default = ';')
CH	column name in the first line (0 = no, 1 = yes)
SC	name and/or number of column that should be referenced
SF	field name and/or field index of field onto the label, which contains the searched data
RC	name and/or number of column, which contains the data to be printed



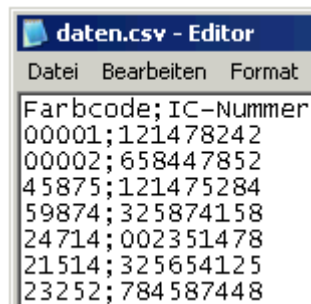
NOTICE!

If in parameter SF a field name is indicated, this must have been defined for the appropriate field by an AC attribute statement!

Example

```
AC[1]NAME="FCODE"
BM[2]=MD(FN="a:\daten.csv";SE=';';CH=1;SC="Farbcode";SF="FCODE";
RC="IC-Nummer")
```

Field 1	Output Field 2
00001	121478242
23252	784587448



8.12 GS1-128 Parser



NOTICE!

By means of this variable type, the content of an application identifier in a GS1-128 bar code can be determined.

```
SOHBM[n]=AI(p;Ai)ETB
```

= AI	identification of GS1-128 parser
p	identification of the link element (field number)
Ai	application identifier

Example

```
Field 1 ="00123456789012345675" GS1-128 with AI00
=AI(1;"00") Printout: 123456789012345675
```


8.13 EPC Calculation (Electronic Product Code)

SOH BM [n] = E P C (M ; L ; F ; P ; N1 ; {N2}) ETB

= EPC identification of EPC calculation
 M coding method
 L length of manufacturer number (company prefix)
 F filter value
 P verification of check digit
 N1 identification of link element (field number)
 N2 identification of link element (field number) - optional

For more information, visit the following web sites:
www.epcglobalinc.org or www.gs1.org

Param.	Value range		
M	0 = coding method SSCC96	3 = coding method GRAI96	
	1 = coding method SGTIN96	4 = coding method GIAI96	
	2 = coding method SGLN96		
L	6...12		
F	Coding	Filter value	Binary
	SSCC96	All Others	000
		Undefined	001
		Logistical / Shipping Unit	010
	SGTIN96	All Others	000
		Retail Consumer Trade Item	001
		Standard Trade Item Grouping	010
		Single Shipping/ Consumer Trade Item	011
	SGLN	All Others	000
		Physical Location	001
	GRAI	All Others	000
	GIAI	All Others	000
P	0 = no verification; 1 = verification		
N1, N2	any		

Example 1

Field 1 ="00123456789012345675" GS1-128 with AI00
 Field 2 =AI(1;"00") --> Printout: 123456789012345675
 Field 3 =EPC(0;12;0;1;2) --> Printout: 3100DA7557D32C38E7000000

The EPC is calculated with the content of Field 2. The coding method SSCC96 is used. In Field 2 a valid NVE must be represented (18-digit, correct check digit).

Example 2

Field 1 ="4141234567890128254123" GS1-128 with AI00, AI254
 Field 2 =AI(1;"414") --> Printout: 1234567890128
 Field 3 =AI(1;"254") --> Printout: 123
 Field 4 =EPC(2;10;0;0;2;3) --> Printout: 3208499602D218000000007B

The EPC is calculated with the content of Field 2 and Field 3. The coding method SGLN96 is used. In Field 2 a valid ILN must be represented (13-digit). In the example, Field 3 contains an optional serial number. No verification of check digit of ILN (8) is effected.

* only when using option RFID

8.14 Check Digit

SOH	BM	[n]	=	C	D	(d	;	s	;	l	;	t	;	w	;	m	;	r	;	o)	t1	t...	t70	ETB
-----	----	-----	---	---	---	---	---	---	---	---	---	---	---	---	---	---	---	---	---	---	---	---	----	------	-----	-----

- = CD Identification of check digit
- d Data for check digit calculation (field number of constant text)
Constant text is enclosed in "".
- s Start position within data
1 ...n Start calculation at digit x
- l Number of digits. If the parameter is not indicated, the remaining data (from start position) is used for the check digit calculation.
- t Check digit type
 - 0 Modulo 10 (weighting 3)
 - 1 Modulo 11
 - 2 Modulo 43
 - 3 Modulo 47 (weighting 15)
 - 4 Modulo 47 (weighting 20)
 - 5 Modulo 103
 - 6 Customized

Optional parameters for customized check digit

- w Weighting.
Constant text enclosed in "" - contains the individual weighting values or an interval.
Individual values: "x₁,x₂"
Interval: "x₁...x₂"
- m Modulo
- r Add result to
- o Print only one digit
 - 0 No
 - 1 Yes

Example

Entry: =CD("123456789012";0;0;0)
Printout: 8

Entry: =CD("1234567890";0;0;6;"1,3";10;10;1)
Printout: 5

8.15 Substring

SOH	BM	[n]	=	S	S	(d	;	s	;	l)	ETB
-----	----	-----	---	---	---	---	---	---	---	---	---	---	-----

- = SS Identification of substring
- d Data used for substring extraction (field number or field name or constant text.
Constant text is enclosed in "").
- s Start position within data. If this parameter is omitted, the substring extraction starts with the 1st character of the data string.
1 n Start at digit x
- l Number of digits. If this parameter is omitted, all characters from the start position to the end of the data string are returned.
1 ...n At the start position x digits

Example:

Entry: =SS("1234567890";4;3)
 Printout: 456
 Field "ARTIKELNR" has the contents "370012330295"

Entry: =SS(ARTIKELNR;1;4)
 Printout: 3700

9 Parameter Sets

9.1 Label Parameters

Set label photocell type

```
SOH F C D E - - r N - - - - - - ETB
```

N: 0 = transmission photocell normal

N: 1 = reflection photocell

N: 2 = transmission photocell inverse

N: 3 = reflection photocell inverse

Enquire label photocell type

```
SOH F C D E - - w p p p p p p p p p ETB
```

Answer

```
SOH A N - - - - - - p p p p p p p p p ETB
```

Set label type

```
SOH F C D A - - r N - - - - - - ETB
```

N: 0 = change to adhesive labels (automatically measure process)

N: 1 = change to continuous labels

Enquire label type

```
SOH F C D A - - w p p p p p p p p p ETB
```

Answer

```
SOH A N - - - - - - p p p p p p p p p ETB
```

Measure label

In case of loading a new label roll it is possible to start measuring by this command.

```
SOH F C B - - - r - - - - - - ETB
```

The current label and gap length in the printer can be sent to the Host computer:

```
SOH F C B - - - w p p p p p p p p p ETB
```

After this command the printer sends the following answer:

Answer

```
SOH A E E E E S S S S p p p p p p p p p ETB
```

EEEE = label length in mm (ASCII)

SSSS = gap length in mm (ASCII)

Set label length in 1/100 mm

SOH F C C L - - r N N N N N N N - ETB

N = value of label length in 1/100 mm, 7 digit ASCII number

Enquire label length in 1/100 mm

SOH F C C L - - w N N N N N N N - ETB

Answer

SOH A N N N N N N N - p p p p p p p p ETB

Set gap length in 1/100 mm

SOH F C C M - - r M M M M M - - - ETB

M = value of gap length in 1/100 mm, 5 digit ASCII number

Enquire gap length in 1/100 mm

SOH F C C M - - w M M M M M - - - ETB

Answer

SOH A M M M M M - - - p p p p p p p p ETB

Set label width in 1/100 mm

SOH F C C O - - r N N N N N N N ETB

N = indication of label width in 1/100 mm, 7 digit ASCII number

Enquire label width in 1/100 mm

SOH F C C O - - w P P P P P P P P ETB

Answer

SOH A N N N N N N N - p p p p p p p p ETB

Set label error length in mm

SOH F C D G A - r N N N - - - - ETB

NNN = indication of label error length in mm (1-999)

Enquire label error length

SOH F C D G A - w p p p p p p p p ETB

Answer

SOH A N N N - - - - p p p p p p p p ETB

Set label synchronization

SOH F C D G B - r N - - - - - ETB

N: 0 = Off

N: 1 = On

Enquire label synchronization

SOH F C D G B - w p p p p p p p p ETB

Answer

SOH A N - - - - - p p p p p p p p ETB

Set number of columns

SOH F C C H A - r N - - - - - ETB

N = number of columns (1 ... 9)

Enquire number of columns

SOH F C C H A - w p p p p p p p p ETB

Answer

SOH A N - - - - - p p p p p p p p ETB

Set column width

SOH F C C H B - r N N N - - - - - ETB

NNN = indication of column width in 1/10 mm (0 ... 999)

Enquire column width

SOH F C C H B - w p p p p p p p p ETB

Answer

SOH A N N N - - - - - p p p p p p p p ETB

Set label alignment

SOH F C C J - - r N - - - - - ETB

N: 0 = left

N: 1 = centre

N: 2 = right

Enquire label alignment

SOH F C C J - - w p p p p p p p p ETB

Answer

SOH A N - - - - - p p p p p p p p ETB

Set contrast

SOH	F	C	A	B	-	-	r	N	N	N	-	-	-	-	ETB
-----	---	---	---	---	---	---	---	---	---	---	---	---	---	---	-----

NNN: indication of contrast in % (010 ... 200)
 necessary to transmit a 3 digit ASCII number.

Enquire contrast

SOH	F	C	A	B	-	-	w	p	p	p	p	p	p	p	ETB
-----	---	---	---	---	---	---	---	---	---	---	---	---	---	---	-----

Answer

SOH	A	N	N	N	-	-	-	-	p	p	p	p	p	p	ETB
-----	---	---	---	---	---	---	---	---	---	---	---	---	---	---	-----

Set flip label

SOH	F	C	D	O	-	-	r	N	-	-	-	-	-	ETB
-----	---	---	---	---	---	---	---	---	---	---	---	---	---	-----

N: 0 = flip label Off

N: 1 = flip label On

Enquire flip label

SOH	F	C	D	O	-	-	w	p	p	p	p	p	p	ETB
-----	---	---	---	---	---	---	---	---	---	---	---	---	---	-----

Answer

SOH	A	N	-	-	-	-	-	p	p	p	p	p	p	ETB
-----	---	---	---	---	---	---	---	---	---	---	---	---	---	-----

Set rotate label

SOH	F	C	D	N	-	-	r	X	-	-	-	-	-	ETB
-----	---	---	---	---	---	---	---	---	---	---	---	---	---	-----

X: 0 = rotate label Off

X: 1 = rotate label On

Enquire rotate label

SOH	F	C	D	N	-	-	w	p	p	p	p	p	p	ETB
-----	---	---	---	---	---	---	---	---	---	---	---	---	---	-----

Answer

SOH	A	X	-	-	-	-	-	p	p	p	p	p	p	ETB
-----	---	---	---	---	---	---	---	---	---	---	---	---	---	-----

Set mode flip/rotate label

SOH	F	C	D	S	-	-	r	N	-	-	-	-	-	ETB
-----	---	---	---	---	---	---	---	---	---	---	---	---	---	-----

N: 0 = flip/rotate label at the center point of label

N: 1 = flip/rotate label at the center point of printhead

Enquire mode flip/rotate label

SOH	F	C	D	S	-	-	w	p	p	p	p	p	p	ETB
-----	---	---	---	---	---	---	---	---	---	---	---	---	---	-----

Answer

SOH	A	N	-	-	-	-	-	p	p	p	p	p	p	ETB
-----	---	---	---	---	---	---	---	---	---	---	---	---	---	-----

Set material selection

SOH	F	C	D	N	C	-	r	N	N	N	N	-	-	-	-	ETB
-----	---	---	---	---	---	---	---	---	---	---	---	---	---	---	---	-----

NNNN: indication of material

0 = type 1

1 = type 2

Enquire material selection

SOH	F	C	D	N	C	-	w	p	p	p	p	p	p	p	p	p	ETB
-----	---	---	---	---	---	---	---	---	---	---	---	---	---	---	---	---	-----

Answer

SOH	A	N	N	N	N	-	-	-	-	p	p	p	p	p	p	p	ETB
-----	---	---	---	---	---	---	---	---	---	---	---	---	---	---	---	---	-----

Set rotate label in 90 degrees

SOH	F	C	D	N	D	-	r	N	-	-	-	-	-	-	ETB
-----	---	---	---	---	---	---	---	---	---	---	---	---	---	---	-----

N: 0 = 0°

N: 1 = 90°

N: 2 = 180°

N: 3 = 270°

Enquire rotate label in 90 degrees

SOH	F	C	D	N	D	-	w	p	p	p	p	p	p	p	p	ETB
-----	---	---	---	---	---	---	---	---	---	---	---	---	---	---	---	-----

Answer

SOH	A	N	-	-	-	-	-	p	p	p	p	p	p	p	p	ETB
-----	---	---	---	---	---	---	---	---	---	---	---	---	---	---	---	-----

Set scan position

SOH	F	C	D	E	A	-	r	N	N	-	-	-	-	-	ETB
-----	---	---	---	---	---	---	---	---	---	---	---	---	---	---	-----

NN = indication of scan position in % of the set label length (01 ... 99)
value depends on the label length

Enquire scan position

SOH	F	C	D	E	A	-	w	p	p	p	p	p	p	p	p	ETB
-----	---	---	---	---	---	---	---	---	---	---	---	---	---	---	---	-----

Answer

SOH	A	N	N	-	-	-	-	p	p	p	p	p	p	p	ETB
-----	---	---	---	---	---	---	---	---	---	---	---	---	---	---	-----

Set sensitivity of transmission photocell

SOH	F	C	D	E	B	-	r	N	N	N	-	-	-	-	ETB
-----	---	---	---	---	---	---	---	---	---	---	---	---	---	---	-----

NNN = indication of photocell sensitivity
3 digit ASCII number (001 ... 255)

Enquire sensitivity of transmission photocell

SOH	F	C	D	E	B	-	w	p	p	p	p	p	p	p	p	ETB
-----	---	---	---	---	---	---	---	---	---	---	---	---	---	---	---	-----

Answer

SOH	A	N	N	N	-	-	-	-	p	p	p	p	p	p	p	ETB
-----	---	---	---	---	---	---	---	---	---	---	---	---	---	---	---	-----

Set sensitivity of reflexion photocell

SOH	F	C	D	E	C	-	r	N	N	N	-	-	-	-	ETB
-----	---	---	---	---	---	---	---	---	---	---	---	---	---	---	-----

NNN = indication of photocell sensitivity
NNN = 3 digit ASCII number (001 ... 255)

Enquire sensitivity of reflexion photocell

SOH	F	C	D	E	C	-	w	p	p	p	p	p	p	p	p	ETB
-----	---	---	---	---	---	---	---	---	---	---	---	---	---	---	---	-----

Answer

SOH	A	N	N	N	-	-	-	-	p	p	p	p	p	p	p	ETB
-----	---	---	---	---	---	---	---	---	---	---	---	---	---	---	---	-----

9.2 Photocell

Enquire minimal measured level at label photocell (label parameter A)

SOH F C M A A - w p p p p p p p p ETB

Answer

SOH A N N N - - - - p p p p p p p p ETB

NNN = value of measured level, 3 digit ASCII number in 1/100 V

Enquire maximal measured level at label photocell (label parameter B)

SOH F C M A B - w p p p p p p p p ETB

Answer

SOH A N N N - - - - p p p p p p p p ETB

NNN = value of measured level, 3 digit ASCII number in 1/100 V

Set switching threshold at label photocell (label parameter C)

SOH F C M A C - r N N N - - - - ETB

NNN = value of switching threshold, 3 digit ASCII number in 1/100 V
value is automatically calculated at measuring process at
printer ($\text{min} + \frac{\text{max} - \text{min}}{3}$)

Enquire switching threshold

SOH F C M A C - w p p p p p p p p ETB

Answer

SOH A N N N - - - - p p p p p p p p ETB

NNN = value at measured switching threshold
3 digit ASCII number in 1/100 V

Enquire current value at transfer ribbon photocell

SOH F C M B A - w p p p p p p p p ETB

Answer

SOH A N - - - - - p p p p p p p p ETB

N: 0 = transfer ribbon inserted
N: 1 = no transfer ribbon

Enquire current value at label photocell

SOH	F	C	M	B	B	-	w	p	p	p	p	p	p	p	p	p	ETB
-----	---	---	---	---	---	---	---	---	---	---	---	---	---	---	---	---	-----

Answer

SOH	A	N	N	N	-	-	-	-	p	p	p	p	p	p	p	p	ETB
-----	---	---	---	---	---	---	---	---	---	---	---	---	---	---	---	---	-----

NNN: value at label photocell, 3 digit ASCII number in 1/100 V

Enquire status at dispenser photocell

SOH	F	C	M	B	E	A	w	p	p	p	p	p	p	p	p	p	ETB
-----	---	---	---	---	---	---	---	---	---	---	---	---	---	---	---	---	-----

Answer

SOH	A	N	-	-	-	-	-	p	p	p	p	p	p	p	p	ETB
-----	---	---	---	---	---	---	---	---	---	---	---	---	---	---	---	-----

N: 0 = no label at photocell

N: 1 = label at photocell

Set switching threshold of dispenser photocell is taken into consideration.

9.3 Printer Parameters

Set print speed

SOH	F	C	A	A	-	-	r	N	N	N	-	-	-	-	ETB
-----	---	---	---	---	---	---	---	---	---	---	---	---	---	---	-----

NNN: Indication of print speed in mm/s

Vario III 103/8 T + Vario III 108/12 T = 50 ... 250

Vario III 104/8 + Vario III 107/12 = 50 ... 250

Vario III 107/24 = 50 ... 100

It is necessary to transmit a 3 digit ASCII number

Enquire print speed

SOH	F	C	A	A	-	-	w	p	p	p	p	p	p	p	p	ETB
-----	---	---	---	---	---	---	---	---	---	---	---	---	---	---	---	-----

Answer

SOH	A	N	N	N	-	-	-	-	p	p	p	p	p	p	p	ETB
-----	---	---	---	---	---	---	---	---	---	---	---	---	---	---	---	-----

Set transfer ribbon control On/Off

SOH	F	C	D	B	-	-	r	N	M	-	-	-	-	ETB
-----	---	---	---	---	---	---	---	---	---	---	---	---	---	-----

N: 1 = transfer ribbon control On

N: 0 = transfer ribbon control Off

M: 0 = weak sensibility

M: 1 = strong sensibility

Enquire transfer ribbon On/Off

SOH	F	C	D	B	-	-	w	p	p	p	p	p	p	p	ETB
-----	---	---	---	---	---	---	---	---	---	---	---	---	---	---	-----

Answer

SOH	A	N	M	-	-	-	-	-	p	p	p	p	p	p	ETB
-----	---	---	---	---	---	---	---	---	---	---	---	---	---	---	-----

Set field handling

SOH	F	C	D	K	-	-	r	N	-	-	-	-	-	ETB
-----	---	---	---	---	---	---	---	---	---	---	---	---	---	-----

N: 0 = field handling Off

N: 1 = graphic received

N: 2 = delete graphic

N: 3 = restore graphic

Enquire field handling

SOH	F	C	D	K	-	-	w	p	p	p	p	p	p	ETB
-----	---	---	---	---	---	---	---	---	---	---	---	---	---	-----

Answer

SOH	A	N	-	-	-	-	-	-	p	p	p	p	p	p	ETB
-----	---	---	---	---	---	---	---	---	---	---	---	---	---	---	-----

Set printer language

SOH F C D I - - r N - - - - - - ETB

N: 10 = German	N: 17 = Netherlands	N: 14 = Chinese
N: 11 = English	N: 18 = Italian	N: 15 = not used
N: 12 = French	N: 19 = Danish	N: 16 = Ukrainian
N: 13 = Spanish	N: 10 = Polish	N: 17 = Turkish
N: 14 = Finish	N: 11 = Greek	N: 18 = Swedish
N: 15 = Czech	N: 12 = Hungarian	N: 19 = Norwegian
N: 16 = Portuguese	N: 13 = Russian	

Enquire printer language

SOH F C D I - - w p p p p p p p p ETB

Answer

SOH A N - - - - - - p p p p p p p p ETB

Set external printer parameters

SOH F C C P - - r N - - - - - - ETB

N: 0 = only parameter settings by interface for label length, gap length and label width are taken into consideration.
 N: 1 = parameter settings by interface are processed
 N: 2 = parameter settings by interface are not taken into consideration

Enquire external printer parameters

SOH F C C P - - w p p p p p p p p ETB

Answer

SOH A N - - - - - - p p p p p p p p ETB

Set Codepage

SOH F C C N - - r N - - - - - - ETB

N: 0 = Codepage 1252 West European (former ANSI)
 N: 1 = Codepage 437 English
 N: 2 = Codepage 850 Western European
 N: 3 - 8 = not used
 N: 9 = Codepage 852 Slavic
 N: 10 = Codepage 857 Turkish
 N: 11 = Codepage 1250 Central and East European
 N: 12 = Codepage 1251 Cyrillic
 N: 13 = Codepage 1253 Greek
 N: 14 = Codepage 1254 Turkish
 N: 15 = Codepage 1257 Baltic
 N: 16 = WGL4 (UTF-8 coded data transmission)

Please find the tables referring to the above mentioned character sets on www.carl-valentin.de/Downloads.

Enquire Codepage

SOH F C C N - - w p p p p p p p p ETB

Answer

SOH A N - - - - - - p p p p p p p p ETB

Set customized entry

SOH F C D U - - r N - - - - - ETB

- N: 0 = Off No question appears at the display. In this case the stored default value is printed.
- N: 1 = On The question referring the customized variable appears once before the print start at the display.
- N: 2 = Auto The question referring the customized variable appears again after print end. Additionally a query appears demanding the number of copies that should be print.
- N: 3 = Auto without quantity:
The question referring the customized variable appears again after print end. However, the same number of copies is printed. This number was defined once at the start of the print order.

Enquire customized entry

SOH F C D U - - w p p p p p p p p ETB

Answer

SOH A N - - - - - p p p p p p p p ETB

Set keyboard layout

SOH F C C K - - r N - - - - - ETB

- N: 0 = German
- N: 1 = English
- N: 2 = French
- N: 3 = Greek
- N: 4 = Spanish
- N: 5 = Swedish
- N: 6 = US American
- N: 7 = Russian

Enquire keyboard layout

SOH F C C K - - w p p p p p p p p ETB

Answer

SOH A N - - - - - p p p p p p p p ETB

Set sound level of key click (buzzer)

SOH F C C B - - w p p p p p p p p ETB

- N: 0 = buzzer Off
- N: 1-7 = sound level of key click

Enquire sound level of key click (buzzer)

SOH F C C B - - w p p p p p p p p ETB

Answer

SOH A N - - - - - p p p p p p p p ETB

Set brightness of display (contrast)

SOH F C C B B - r N N N - - - - - ETB

NNN = value range of display brightness 045 ... 075

Enquire display brightness

SOH F C C B B - w p p p p p p p p p ETB

Answer

SOH A N N N - - - - - p p p p p p p p p ETB

Set hotstart On/Off

SOH F C D W - - r N - - - - - - - - - ETB

N: 0 = Off

N: 1 = On

Enquire hotstart On/Off

SOH F C D W - - w p p p p p p p p p ETB

Answer

SOH A N - - - - - - - - - p p p p p p p p p ETB

Set autoload

SOH F C D X - - r N - - - - - - - - - ETB

N: 0 = Off

N: 1 = On

Enquire autoload

SOH F C D X - - w p p p p p p p p p ETB

Answer

SOH A N - - - - - - - - - p p p p p p p p p ETB

Set standard label On/Off

SOH F C M K E - r N - - - - - - - - - ETB

N: 0 = Off (default) - print start without label definition signalizes error

N: 1 = On - standard label is printed without label definition

Enquire standard label On/Off

SOH F C M K E - w p p p p p p p p p ETB

Answer

SOH A N - - - - - - - - - p p p p p p p p p ETB

Set backfeed operating mode

SOH F C M R A - r N - - - - - ETB

N: 0 = standard
 N: 1 = automatic
 N: 2 = no backfeed
 N: 3 = optimized

Enquire backfeed operating mode

SOH F C M R A - w p p p p p p p p ETB

Answer

SOH A N - - - - - p p P p p p p p p ETB

Set backfeed delay

SOH F C M R B - r N N N - - - - - ETB

NNN: indication of delay time, 3 digit ASCII number in 1/100s

Enquire backfeed delay

SOH F C M R B - w p p p p p p p p ETB

Answer

SOH A N N N - - - - - p p p p p p p p p ETB

Set label change confirmation

SOH F C S D F C r N - - - - - ETB

N: 0 = Off
 N: 1 = On

Enquire label change confirmation

SOH F C S D F C w p p p p p p p p ETB

Answer

SOH A N - - - - - p p p p p p p p p ETB

Set label synchronization at switching on

SOH F C C A - - r N - - - - - ETB

N: 0 = Off
 N: 1 = Measure
 N: 2 = Label feed

Enquire synchronization at switching on

SOH F C C A - - w p p p p p p p p ETB

Answer

SOH A N - - - - - p p p p p p p p p ETB

Set CMI length

SOH	F	C	D	J	C	-	r	N	-	-	-	-	-	-	-	ETB
-----	---	---	---	---	---	---	---	---	---	---	---	---	---	---	---	-----

NNN: value that the labels are retracted at a stop
3 digit ASCII number in 1/100 mm (000 ... 100)

Enquire CMI length

SOH	F	C	D	J	C	-	w	p	p	p	p	p	p	p	p	ETB
-----	---	---	---	---	---	---	---	---	---	---	---	---	---	---	---	-----

Answer

SOH	A	N	-	-	-	-	-	p	p	p	p	p	p	p	p	ETB
-----	---	---	---	---	---	---	---	---	---	---	---	---	---	---	---	-----

9.4 Interface

By means of the following commands the parameters of the serial interface can be set. Note that after sending one of the commands also the host computer changes the corresponding parameter of its interface to allow further communication of host computer-printer. For all interface commands the interface is fixed with x. The following values are allowed:

x = 1 ⇒ COM 1

x = 2 ⇒ COM 2

In all other cases automatically the first serial interface is addressed. In the answers the addressed interface is also returned.

Set all interface parameters

```
[SOH]FCFFx-rm;b;p;d;s[ETB]
```

m = mode (0 = Off, 1 = On, 2 = On, without error message)

b = baud rate (2400, 4800, 9600, 19200, 38400, 115200)

p = parity (n = no parity, e = even parity, o = odd parity)

d = number of data bits (7, 8)

s = number of stop bits (1, 2)

Enquire all interface parameters

```
[SOH]FCFFx-wppppppp[ETB]
```

Answer

```
[SOH]Ax;m;b;p;d;s;pppppppp[ETB]
```

Example: activate interface COM1 and set 9600 Baud, no parity, 8 data bits, 2 stop bits
[SOH]FCFF1-r1;9600;n;8;2[ETB]

Interface protocol

There are two different interface protocols available. Usually SOH = 01_{Hex} and

ETB = 17_{Hex}. However there are host computers (e.g. AS/400), which cannot work with these characters. Therefore you can switch SOH = 5E_{Hex} and ETB = 5F_{Hex}. The host computer has to change the corresponding parameter as well.

Set SOH and ETB

```
[SOH]FCGC--rN-----[ETB]
```

N: 0 = SOH = 01_{Hex}, ETB = 17_{Hex}

N: 1 = SOH = 5E_{Hex}, ETB = 5F_{Hex}

Enquire SOH and ETB

```
[SOH]FCGC--Wppppppp[ETB]
```

Answer

```
[SOH]AN-----pppppppp[ETB]
```

N: 0 = SOH = 01_{Hex}, ETB = 17_{Hex}

N: 1 = SOH = 5E_{Hex}, ETB = 5F_{Hex}

N: 2 = other character combination

Data memory**Set data memory**

SOH F C G D - - r M - - - - - ETB

M: 0 = Off, after receiving FBCA0r or FBDA0r the interface is locked until the end of the print order, i.e. you cannot write more data in the receiving buffer.

M: 1 = Off, after receiving FBCA0r or FBDA0r the interface is locked until the end of the print order, i.e. you cannot write more data in the receiving buffer.

M: 2 = Extended, after starting a print order it is possible to write more data in the receiving buffer. These data is processed during the print and the next label is prepared.

Enquire data memory

SOH F C G D - - W p p p p p p p p ETB

Answer

SOH A M - - - - - p p p p p p p p ETB

Set reaction to unknown interrogative set

SOH F C G E A - r N - - - - - ETB

N = value range between 0 and 3

Enquire reaction to unknown questions

SOH F C G E A - w p p p p p p P p ETB

Answer

SOH A N - - - - - p p p p p p p p ETB

9.5 Network

```
SOH F C L A - - r C 0 A 8 0 0 1 5 ETB
```

All network parameter sets start in the third column with a 'L'. Column 4 shows the identification for the corresponding network parameter. Column 5 can show another sub-identification.

Because of the fact that the argument size is limited to 8 characters, the IP addresses (IP address, network mask, gateway address) which consist of 32 bit are transmitted in HEX presentation.

For all data which is transmitted in HEX presentation (also the MAC address) it is allowed to use capital as well as small letters.

In contrary to the parameter settings of the other interfaces, the settings of the following sets were saved immediately onto Flash, i.e. it is not necessary to save the currently set configuration before switching off the printer so the modifications are still available after switching on.

So that the made modifications become active, also without printer Reset it is necessary to transmit a corresponding Z set which effects a Reset of the network devices.

Set IP address (e.g. 192.168.0.21)

```
SOH F C L A - - r C 0 A 8 0 0 1 5 ETB
```

Enquire IP address

```
SOH F C L A - - w p p p p p p p ETB
```

Answer

```
SOH A C 0 A 8 0 0 1 5 p p p p p p p ETB
```

Set netmask (e.g. 255.255.255.0)

```
SOH F C L B - - r F F F F F F 0 0 ETB
```

Enquire netmask

```
SOH F C L B - - w F F F F F F 0 0 ETB
```

Answer

```
SOH A F F F F F F 0 0 p p p p p p p ETB
```

Set Gateway address (e.g. 192.168.0.1)

```
SOH F C L C - - r C 0 A 8 0 0 0 1 ETB
```

Enquire Gateway address

```
SOH F C L C - - w p p p p p p p ETB
```

Answer

```
SOH A C 0 A 8 0 0 0 1 p p p p p p p ETB
```

Set transmission mode (e.g. auto recognition)

SOH F C L D - - r 0 - - - - - - ETB

0 = auto recognition

3 = 100 MBit/s half duplex

1 = 10 MBit/s half duplex

4 = 100 MBit/s full duplex

2 = 10 MBit/s full duplex

Enquire transmission mode

SOH F C L D - - w 0 - - - - - - ETB

Answer

SOH A 0 - - - - - - p p p p p p p p ETB

Set DHCP support

SOH F C L E - - r N ETB

N: 0 = Off

N: 1 = On

Enquire DHCP support

SOH F C L E - - w p p p p p p p p ETB

Answer

SOH A N - - - - - - p p p p p p p p ETB

Assign printer name

SOH F C L F - - R N N N N N N N N N N N ETB

N = printer name can consist of max. 11 characters

[A...Z, a...z, 0...9, -, -]

Enquire printer name

SOH F C L F - - w p p p p p p p p ETB

Answer

SOH A N N N N N N N N ; p p p p p p p p ETB

Set MAC address (e.g. 00-07-4A-43-19-08)

SOH F C L M B - r 0 0 0 7 4 A - - ETB

SOH F C L M A - r 4 3 1 9 0 8 - - ETB

SOH F C L M C - r 0 0 0 7 4 A 1 9 0 8 ETB

A MAC address has a width of 48 bit and is normally indicated in hexadecimals.

With the B record our identifier of the MAC address can be changed. All our machines start with 00-07-4A as default. This corresponds to the Memory-Pool which the MAC address committee assigned to us to guarantee that the MAC address is world-wide manufacturer-spreading unique.

With the A record any address can be set in our pool.

With the C record any address in our pool and the identification of the MAC address can be set/changed at the same time.

Enquire MAC address

SOH	F	C	L	M	B	-	w	p	p	p	p	p	p	p	p	p	ETB
-----	---	---	---	---	---	---	---	---	---	---	---	---	---	---	---	---	-----

SOH	F	C	L	M	A	-	w	p	p	p	p	p	p	p	p	p	ETB
-----	---	---	---	---	---	---	---	---	---	---	---	---	---	---	---	---	-----

SOH	F	C	L	M	C	-	w	p	p	p	p	p	p	p	p	p	ETB
-----	---	---	---	---	---	---	---	---	---	---	---	---	---	---	---	---	-----

Answer

SOH	A	0	0	0	7	4	A	-	-	p	p	p	p	p	p	p	ETB
-----	---	---	---	---	---	---	---	---	---	---	---	---	---	---	---	---	-----

SOH	A	4	3	1	9	0	8	-	-	p	p	p	p	p	p	p	ETB
-----	---	---	---	---	---	---	---	---	---	---	---	---	---	---	---	---	-----

SOH	A	0	0	0	7	4	A	4	3	1	9	0	8	p	p	p	p	p	p	p	ETB
-----	---	---	---	---	---	---	---	---	---	---	---	---	---	---	---	---	---	---	---	---	-----

NTP Server

NTP (Network Time Protocol) is a standardized Internet protocol permitting the synchronization of real-time clocks of network participants. The printer connects itself with a time server and align every 60 minutes its internal real-time clock with that of the time server in order to correct possible differences.

The address of server (IP address) can be freely configured in the printer. The communication is effected by UDP and the fixed set port 123. The service in the printer is deactivated by transmitting the server address 0.0.0.0.

The time servers work together with the coordinated world time (UTC) and therefore an additional time shift is needed compared to the reference time. For Germany it is e.g. +1 hour.

The current state of the connexion can be queried with a status set.

Set NTP Server IP

SOH	F	C	L	N	I	-	r	N	ETB
-----	---	---	---	---	---	---	---	---	-----

N = X.X.X.X (X = 0 ... 255)

Enquire NTP Server IP

SOH	F	C	L	N	I	-	w	p	p	p	p	p	p	p	p	ETB
-----	---	---	---	---	---	---	---	---	---	---	---	---	---	---	---	-----

Answer

SOH	A	N	N	N	N	N	N	N	N	p	p	p	p	p	p	p	ETB
-----	---	---	---	---	---	---	---	---	---	---	---	---	---	---	---	---	-----

0.0.0.0 deactivates the NTP service

Readout NTP status

SOH	F	C	L	N	S	-	w	p	p	p	p	p	p	p	p	p	ETB
-----	---	---	---	---	---	---	---	---	---	---	---	---	---	---	---	---	-----

Answer

SOH	A	N	-	-	-	-	-	-	p	p	p	p	p	p	p	p	ETB
-----	---	---	---	---	---	---	---	---	---	---	---	---	---	---	---	---	-----

N: 0 = Off

N: 1 = OK

N: 2 = Error

Set time zone (hour offset)

SOH	F	C	L	N	Z	-	r	N	ETB
-----	---	---	---	---	---	---	---	---	-----

N: -12, 12

Enquire time zone (hour offset)

SOH	F	C	L	N	Z	-	w	p	p	p	p	p	p	p	p	p	ETB
-----	---	---	---	---	---	---	---	---	---	---	---	---	---	---	---	---	-----

Answer

SOH	A	N	N	N	N	N	N	N	N	N	p	p	p	p	p	p	p	ETB
-----	---	---	---	---	---	---	---	---	---	---	---	---	---	---	---	---	---	-----

Reset Network Device

SOH	F	C	L	Z	-	-	r	-----	ETB
-----	---	---	---	---	---	---	---	-------	-----

For this set is no enquiry possible. This set causes that modifications made by the transfer of the previous sets become effective.

9.6 Offset Values

Set Y offset

SOH	F	C	C	D	-	-	r	V	N	N	N	-	-	-	ETB
-----	---	---	---	---	---	---	---	---	---	---	---	---	---	---	-----

V = offset prefix (+ or -)

NNN = offset value, 3 digit ASCII number in 1/10 mm

Enquire Y offset

SOH	F	C	C	D	-	-	w	p	p	p	p	p	p	p	ETB
-----	---	---	---	---	---	---	---	---	---	---	---	---	---	---	-----

Answer

SOH	A	V	N	N	N	-	-	-	p	p	p	p	p	p	ETB
-----	---	---	---	---	---	---	---	---	---	---	---	---	---	---	-----

Set X offset

SOH	F	C	C	E	-	-	r	V	N	N	N	-	-	-	ETB
-----	---	---	---	---	---	---	---	---	---	---	---	---	---	---	-----

V = offset prefix (+ or -)

NNN = offset value, 3 digit ASCII number in 1/10 mm

Enquire X offset

SOH	F	C	C	E	-	-	w	P	p	p	p	p	p	p	ETB
-----	---	---	---	---	---	---	---	---	---	---	---	---	---	---	-----

Answer

SOH	A	V	N	N	N	-	-	-	p	p	p	p	p	p	ETB
-----	---	---	---	---	---	---	---	---	---	---	---	---	---	---	-----

Set tear-off offset

SOH	F	C	C	G	-	-	r	V	N	N	N	-	-	-	ETB
-----	---	---	---	---	---	---	---	---	---	---	---	---	---	---	-----

V = offset prefix (always +)

NNN = offset value, 3 digit ASCII number in 1/10 mm

Enquire tear off offset

SOH	F	C	C	G	-	-	w	p	p	p	p	p	p	p	ETB
-----	---	---	---	---	---	---	---	---	---	---	---	---	---	---	-----

Answer

SOH	A	V	N	N	N	-	-	-	p	p	p	p	p	p	ETB
-----	---	---	---	---	---	---	---	---	---	---	---	---	---	---	-----

Set cutter offset

SOH	F	C	S	C	A	-	r	V	N	N	N	-	-	-	-	ETB
-----	---	---	---	---	---	---	---	---	---	---	---	---	---	---	---	-----

V = offset prefix (always +)

NNN = offset value, 3 digit ASCII number in 1/10 mm

Enquire cutter offset

SOH	F	C	S	C	A	-	w	p	P	p	p	p	p	p	p	ETB
-----	---	---	---	---	---	---	---	---	---	---	---	---	---	---	---	-----

Answer

SOH	A	V	N	N	N	-	-	-	-	p	p	p	p	p	p	-	ETB
-----	---	---	---	---	---	---	---	---	---	---	---	---	---	---	---	---	-----

Set dispenser offset

SOH	F	C	S	D	A	-	r	V	N	N	N	-	-	-	-	ETB
-----	---	---	---	---	---	---	---	---	---	---	---	---	---	---	---	-----

V = offset prefix (always +)

NNN = offset value, 3 digit ASCII number in 1/10 mm

Enquire dispenser offset

SOH	F	C	S	D	A	-	w	P	p	p	p	p	p	p	p	ETB
-----	---	---	---	---	---	---	---	---	---	---	---	---	---	---	---	-----

Answer

SOH	A	V	N	N	N	-	-	-	-	p	p	p	p	p	p	ETB
-----	---	---	---	---	---	---	---	---	---	---	---	---	---	---	---	-----

9.7 Service Functions

Set zero point adjustment (Y value)

SOH	F	C	C	R	-	-	r	V	N	N	N	-	-	-	-	ETB
-----	---	---	---	---	---	---	---	---	---	---	---	---	---	---	---	-----

Enquire zero point adjustment (Y value)

SOH	F	C	C	R	-	-	w	p	p	p	p	p	p	p	p	p	ETB
-----	---	---	---	---	---	---	---	---	---	---	---	---	---	---	---	---	-----

V: offset prefix (+ or -)

NNN: offset value

3 digit ASCII number in 1/100 mm (-999 ... +999)

Answer

SOH	A	V	N	N	N	-	-	-	p	p	p	p	p	p	p	p	ETB
-----	---	---	---	---	---	---	---	---	---	---	---	---	---	---	---	---	-----

Set zero point adjustment (X value)

SOH	F	C	C	T	-	-	r	V	N	N	N	-	-	-	-	ETB
-----	---	---	---	---	---	---	---	---	---	---	---	---	---	---	---	-----

Enquire zero point adjustment (X value)

SOH	F	C	C	T	-	-	w	p	p	p	p	p	p	p	p	p	ETB
-----	---	---	---	---	---	---	---	---	---	---	---	---	---	---	---	---	-----

V: offset prefix (+ or -)

NNN: offset value

NNN: 3 digit ASCII number in 1/100 mm (-999 ... +999)

Answer

SOH	A	V	N	N	N	-	-	-	p	p	p	p	p	p	p	p	ETB
-----	---	---	---	---	---	---	---	---	---	---	---	---	---	---	---	---	-----

Set Online / Offline

SOH	F	C	M	K	C	-	r	M	-	-	-	-	-	-	-	ETB
-----	---	---	---	---	---	---	---	---	---	---	---	---	---	---	---	-----

M: 0 = Offline Off

M: 1 = Offline On

Enquire Online / Offline

SOH	F	C	M	K	C	-	w	p	p	p	p	p	p	p	p	p	ETB
-----	---	---	---	---	---	---	---	---	---	---	---	---	---	---	---	---	-----

Answer

SOH	A	M	-	-	-	-	-	p	p	p	p	p	p	p	p	p	ETB
-----	---	---	---	---	---	---	---	---	---	---	---	---	---	---	---	---	-----

After changing by interface the display is automatically new initialized (by activated online/offline changing to online indication).

Set reprint action

SOH F C M K D - r N - - - - - ETB

Enquire reprint action

SOH F C M K D - w p p p p p p p p ETB

N: 0 = complete reprint
 N: 1 = empty reprint

Answer

SOH A N - - - - - p p p p p p p p ETB

Set winder output

SOH F C M P - - r N - - - - - ETB

N: 0 = Off
 N: 1 = On

Enquire winder output

SOH R C M P - - W p p p p p p p p ETB

Answer

SOH A N - - - - - p p p p p p p p ETB

Enquire printhead temperature

SOH F C M C - - w p p p p p p p p ETB

Answer

SOH A N - - - - - p p p p p p p p ETB

NNN = value of temperature, 3 digit ASCII number in degrees

Set transfer ribbon prior warning

SOH F C M L A - r N - - - - - ETB

N: 0 = Off
 N: 1 = On

Enquire transfer ribbon prior warning

SOH F C M L A - w p p p p p p p p ETB

Answer

SOH A N - - - - - p p p P p p p p ETB

Set diameter for transfer ribbon prior warning

SOH F C M L B - r N N N - - - - ETB

NNN = 030 ... 090 diameter in mm

Enquire transfer ribbon prior warning

SOH F C M L B - w p p p p p p p p ETB

Answer

SOH A N - - - - - p p p p p p p p ETB

Readout current transfer ribbon diameter

SOH F C M L C - w - - - - - - - - ETB

Answer

SOH A N N N - - - - - p p p p p p p p ETB

Set mode for transfer ribbon prior warning

SOH F C M L D A r N - - - - - - - - ETB

N: 0 = Warning

N: 1 = Reduced speed

N: 2 = Error

Enquire mode for transfer ribbon prior warning

SOH F C M L D A w p p p p p p p p ETB

Answer

SOH A N - - - - - - - - p p p p p p p p ETB

Set reduced speed (ribbon prior warning)

SOH F C M L D B r N N N - - - - - ETB

NNN = V_{\min} ... V_{\max} : reduced print speed
(depending on printer type)**Enquire reduced speed (ribbon prior warning)**

SOH F C M L D B w p p p p p p p p ETB

Answer

SOH A N N N - - - - - p p p p p p p p ETB

Set printhead resistance

SOH	F	C	M	G	-	-	r	N	N	N	N	N	-	-	-	ETB
-----	---	---	---	---	---	---	---	---	---	---	---	---	---	---	---	-----

NNNNN = value of resistance in Ohm.

Enquire printhead resistance

SOH	F	C	M	G	-	-	w	p	p	p	p	p	p	p	p	ETB
-----	---	---	---	---	---	---	---	---	---	---	---	---	---	---	---	-----

Answer

SOH	A	N	N	N	N	N	-	-	-	p	p	p	p	p	p	p	ETB
-----	---	---	---	---	---	---	---	---	---	---	---	---	---	---	---	---	-----

Set print length correction

SOH	F	C	M	T	-	-	r	V	N	N	N	-	-	-	-	ETB
-----	---	---	---	---	---	---	---	---	---	---	---	---	---	---	---	-----

V: offset prefix (+ or -)

NNN: print length correction value

3 digit ASCII number in 1/10 % (-100 ... +100)

Enquire print length correction

SOH	F	C	M	T	-	-	w	p	p	p	p	p	p	p	p	ETB
-----	---	---	---	---	---	---	---	---	---	---	---	---	---	---	---	-----

Answer

SOH	A	V	N	N	N	-	-	-	p	p	p	p	p	p	p	p	ETB
-----	---	---	---	---	---	---	---	---	---	---	---	---	---	---	---	---	-----

Set custom logo

SOH	F	C	N	R	A	-	r	N	-	-	-	-	-	-	-	ETB
-----	---	---	---	---	---	---	---	---	---	---	---	---	---	---	---	-----

N: 0 = Off

N: 1 = On

Enquire custom logo

SOH	F	C	N	R	A	-	w	p	p	p	p	p	p	p	p	ETB
-----	---	---	---	---	---	---	---	---	---	---	---	---	---	---	---	-----

Answer

SOH	A	N	-	-	-	-	-	p	p	p	p	p	p	p	p	ETB
-----	---	---	---	---	---	---	---	---	---	---	---	---	---	---	---	-----

Paper counter

The paper counter (kilometer value) of printer as well as of printhead can only be enquired by interface and not reset to 0.

Enquire paper counter of printer

SOH	F	C	H	A	-	-	w	p	p	p	p	p	p	p	p	p	ETB
-----	---	---	---	---	---	---	---	---	---	---	---	---	---	---	---	---	-----

Answer

SOH	A	N	N	N	N	N	N	N	N	N	p	p	p	p	p	p	p	ETB
-----	---	---	---	---	---	---	---	---	---	---	---	---	---	---	---	---	---	-----

Enquire paper counter of printhead

SOH	F	C	H	B	-	-	w	p	p	p	p	p	p	p	p	p	ETB
-----	---	---	---	---	---	---	---	---	---	---	---	---	---	---	---	---	-----

Answer

SOH	A	N	N	N	N	N	N	N	N	N	p	p	p	p	p	p	p	ETB
-----	---	---	---	---	---	---	---	---	---	---	---	---	---	---	---	---	---	-----

NNNNNNNN = kilometer value of printer and/or printhead in meters
(e.g. '00000123' = 123 m)

9.8 Date & Time**Set date**

SOH	F	C	I	A	-	-	r	D	D	M	O	Y	Y	D	W	ETB
-----	---	---	---	---	---	---	---	---	---	---	---	---	---	---	---	-----

DD = day of month

MO = month

YY = year

DW = day of week ('00' = Sunday)

Enquire date

SOH	F	C	I	A	-	-	w	p	p	p	p	p	p	p	p	p	ETB
-----	---	---	---	---	---	---	---	---	---	---	---	---	---	---	---	---	-----

Answer

SOH	A	D	D	M	O	Y	Y	D	W	p	p	p	p	p	p	p	ETB
-----	---	---	---	---	---	---	---	---	---	---	---	---	---	---	---	---	-----

Set time

SOH	F	C	I	B	-	-	r	H	H	M	I	S	S	A	M	ETB
-----	---	---	---	---	---	---	---	---	---	---	---	---	---	---	---	-----

HH = hours

MI = minutes

SS = seconds

AM = mode ('am' = 12 hours mode AM, 'pm' = 12 hours mode PM,

'—' = 24 hours mode)

Enquire time

SOH	F	C	I	B	-	-	w	p	p	p	p	p	p	p	p	ETB
-----	---	---	---	---	---	---	---	---	---	---	---	---	---	---	---	-----

Answer

SOH	A	H	H	M	I	S	S	A	M	p	p	p	p	p	p	p	ETB
-----	---	---	---	---	---	---	---	---	---	---	---	---	---	---	---	---	-----

Automatically adjust clock for daylight saving changes

Because of the fact that there is no world-wide regulation if and when a changing of time between summer and wintertime (normal time) in the individual countries takes place, we distinguish between the following four formats for the definition for beginning and end of summertime.

F 0:	European format start of summertime = last Sunday in March end of summertime = last Sunday in October W: week (1 = first, ..., 5 = last) WD: day of week (0 = Sunday, ..., 6 = Saturday) MM: month (01 = January, ..., 12 = December)
F 1:	Fix date with indication of year DD: day MM: month (01 = January, ..., 12 = December) YY: year
F 2:	Fix date without indication of year DD: day MM: month (01 = January, ..., 12 = December)
F 3:	Week day after day in month WD: day of week (0 = Sunday, ..., 6 = Saturday) DD: after day (only the first day is taken into consideration) MM: month (01 = January, ..., 12 = December)

Set automatically adjust clock for daylight saving changes

SOH F C I G - - r N - - - - - ETB

Enquire automatically adjust clock for daylight saving changes

SOH F C I G - - w p p p p p p p p ETB

Answer

SOH A N - - - - - p p p p p p p p ETB

N: 0 = automatically adjust clock for daylight saving changes Off
N: 1 = automatically adjust clock for daylight saving changes On

Set beginning of summertime

F 0: SOH F C I H - - r F W ; W D ; M M ; H H ; M M ETB

F 1: SOH F C I H - - r F D D ; M M ; Y Y ; H H ; M M ETB

F 2: SOH F C I H - - r F D D ; M M ; H H ; M M ETB

F 3: SOH F C I H - - r F W D ; D D ; M M ; H H ; M M ETB

Enquire beginning of summertime

SOH F C I H - - w p p p p p p p p ETB

Answer

SOH A F W W D M M p p p p p p p p ETB

The answer depends on each set format.

Set end of summertime

F 0: SOH F C I I - - r F W ; W D ; M M ; H H ; M M ETB

F 1: SOH F C I I - - r F D D ; M M ; Y Y ; H H ; M M ETB

F 2: SOH F C I I - - r F D D ; M M ; H H ; M M ETB

F 3: SOH F C I I - - r F W D ; D D ; M M ; H H ; M M ETB

Enquire end of summertime

SOH F C I I - - w p p p p p p p p ETB

Answer

SOH A F W W D M M p p p p p p p p ETB

The answer depends on each set format.

Set time shifting

SOH F C I J - - r N N N - - - - ETB

NNN = minutes

Enquire time shifting

SOH F C I J - - w p p p p p p p p ETB

Answer

SOH A N N N p p p p p p p p ETB

9.9 Password

Set password

SOH	F	C	K	A	-	-	r	N	N	N	N	-	-	-	-	ETB
-----	---	---	---	---	---	---	---	---	---	---	---	---	---	---	---	-----

NNNN = input of password
4 digit ASCII number in mm (0000 ... 9999)

Enquire password

SOH	F	C	K	A	-	-	w	p	p	p	p	p	p	p	p	p	ETB
-----	---	---	---	---	---	---	---	---	---	---	---	---	---	---	---	---	-----

Answer

SOH	A	N	N	N	N	-	-	-	-	p	p	p	p	p	p	p	p	ETB
-----	---	---	---	---	---	---	---	---	---	---	---	---	---	---	---	---	---	-----

Set function group

SOH	F	C	K	B	-	-	r	A	B	C	D	E	-	-	-	ETB
-----	---	---	---	---	---	---	---	---	---	---	---	---	---	---	---	-----

A: Function menu

- 0 = free
- 1 = blocked

B: CF card

- 0 = free
- 1 = reading only
- 2 = access blocked

C: Entry

- 0 = free
- 1 = masks blocked only
- 2 = no entry possible

D: Printer guiding

- 0 = free
- 1 = number of copies menu possible
- 2 = no manual print release

E: Favorites menu

- 0 = free
- 1 = blocked

Enquire function group

SOH	F	C	K	B	-	-	w	p	p	p	p	p	p	p	p	p	ETB
-----	---	---	---	---	---	---	---	---	---	---	---	---	---	---	---	---	-----

Answer

SOH	A	a	b	c	d	e	-	-	-	p	p	p	p	p	p	p	p	ETB
-----	---	---	---	---	---	---	---	---	---	---	---	---	---	---	---	---	---	-----

Set password active

SOH F C K C - - r N - - - - - - ETB

N: 0 = inactive (N in display)

N: 1 = active (J in display)

Enquire password active

SOH F C K C - - w p p p p p p p p ETB

Answer

SOH A N - - - - - - p p p p p p p p ETB

Set password function menu

SOH F C K D A - r N N N N - - - - ETB

NNNN = input of password

4 digit ASCII number in mm (0000 ... 9999)

Enquire password function menu

SOH F C K D A - w p p p p p p p p ETB

Answer

SOH A N N N N - - - - p p p p p p p p ETB

Set password favorites menu

SOH F C K D B - r N N N N - - - - ETB

NNNN = input of password

4 digit ASCII number in mm (0000 ... 9999)

Enquire password favorites menu

SOH F C K D B - w p p p p p p p p ETB

Answer

SOH A N N N N - - - - p p p p p p p p ETB

Set password memory card

SOH F C K D C - r N N N N - - - - ETB

NNNN = input of password

4 digit ASCII number in mm (0000 ... 9999)

Enquire password memory card

SOH F C K D C - w p p p p p p p p ETB

Answer

SOH A N N N N - - - - p p p p p p p p ETB

Set password printing manually

SOH	F	C	K	D	D	-	r	N	N	N	N	-	-	-	-	ETB
-----	---	---	---	---	---	---	---	---	---	---	---	---	---	---	---	-----

NNNN = input of password

4 digit ASCII number in mm (0000 ... 9999)

Enquire printing manually

SOH	F	C	K	D	D	-	w	p	p	p	p	p	p	p	p	p	ETB
-----	---	---	---	---	---	---	---	---	---	---	---	---	---	---	---	---	-----

Answer

SOH	A	N	N	N	N	-	-	-	-	p	p	p	p	p	p	p	ETB
-----	---	---	---	---	---	---	---	---	---	---	---	---	---	---	---	---	-----

9.10 Compact Flash Card

Save a label onto Compact Flash card

SOH F M A O - - r P ETB

- O: In case a label with the entered name exists already then the label is overwritten without an enquiry. If you enter another value as 0, an enquiry appears demanding if you want to overwrite.
- P: File name of the label which is to save. Drive and path name are optional, i.e. the file name is allowed to have more than 8 characters but is limited to 79.

Load a file from Compact Flash card

SOH F M B - - - r P ETB

- P: File name of the layout which is to load. Drive and path name are optional, i.e. the file name is allowed to have more than 8 characters but is limited to 79.

Delete a layout from Compact Flash card

SOH F M C - - - r P ETB

- P: File name of the layout which is to delete. Drive and path name are optional, i.e. the file name is allowed to have more than 8 characters but is limited to 79.

Format Compact Flash card

SOH F M D - - - r P ETB

- P: Optional drive identification with colon (e.g. A:).
In case no drive is indicated, then the currently selected is formatted.

Readout contents of CF card

SOH F M G O - - r P ETB

- O: In case O is indicated, no error messages are displayed at the printing display e.g. if no card is inserted.
- P: Optional drive identification with colon (e.g. A:).
In case no drive is indicated, then the currently selected is read out.

Answer

SOH File name/directory name ETB

- A list of all file entries is indicated, each entry is included in (SOH) and (ETB).

Readout free memory space

SOH	F	M	H	O	-	-	w	X	p	p	p	p	p	p	p	p	ETB
-----	---	---	---	---	---	---	---	---	---	---	---	---	---	---	---	---	-----

O: In case O is indicated, no error messages are displayed at the printing display e.g. if no card is inserted.

X = Drive [A,B] (optional)

Answer

SOH	A	X	n	n	n	n	-	-	-	p	p	p	p	p	p	p	ETB
-----	---	---	---	---	---	---	---	---	---	---	---	---	---	---	---	---	-----

X = Drive [A,B]

n = Memory space in KB

Create directory

SOH	F	M	I	O	-	-	r	P	ETB
-----	---	---	---	---	---	---	---	---	-----

O: In case a label with the entered name already exists, then it is overwritten without an enquiry.

If you enter another value as O, an enquiry appears demanding if you want to overwrite.

P = Drive and path indication

Delete directory

SOH	F	M	J	-	-	-	r	P	ETB
-----	---	---	---	---	---	---	---	---	-----

P = Drive and path indication

**NOTICE!**

The current directory cannot be deleted.

Delete directory path

SOH	F	M	J	A	-	-	-	r	P	ETB
-----	---	---	---	---	---	---	---	---	---	-----

Deletes the indicated directory including all containing sub-directories and files.

Change standard directory

SOH	F	M	K	-	-	-	r	P	ETB
-----	---	---	---	---	---	---	---	---	-----

P = Drive and path indication

Readout current directory

SOH	F	M	K	-	-	-	w	ETB
-----	---	---	---	---	---	---	---	-----

Answer

SOH	A	P	ETB
-----	---	---	-----

P = Current directory

Set standard directory for file selection via I/O

SOH F M K B - - r N ETB

N = directory path

Enquire standard directory for file selection via I/O

SOH F M K B - - w p p p p p p p p ETB

Antwort

SOH A N - - - - - p p p p p p p p ETB

Transfer file

SOH F M L - - - w P ETB

P: File name of file which is to transfer. Drive name and path name are optional, i.e. the file name is allowed to have more than 8 characters but is limited to 79.

Answer

SOH A F * S ETB Data

F = File name
S = File size in Byte
Data = Binary data

Enquiry if the file exists

SOH F M M - - - w P ETB

P: File name of file which is to transfer. Drive name and path name are optional, i.e. the file name is allowed to have more than 8 characters but is limited to 79.

Answer

SOH A X P ETB Daten

X: 0 = File does not exist
1 = File exists
P = File name

Readout size of Compact Flash card

SOH F M P O - - w X ETB

O: In case O is indicated, no error messages are displayed at the printing display e.g. if no card is inserted.
X: Drive [A,B] (optional)

Answer

SOH A D n n n n - - - X ETB

X = Drive [A,B]
n = Memory in KB
D = enquired drive

Drive status

SOH	F	M	S	-	-	-	w	X	ETB
-----	---	---	---	---	---	---	---	---	-----

X - Drive [A,B]

Answer

SOH	A	X	S	ETB
-----	---	---	---	-----

X = Drive [A,B]

S = Status

0: no storage medium

1: not formatted

2: ready

3: not determinable

9.11 Printing

Set number of lines (n digits)

```
SOH F B A A - - r N ETB
```

N = number of lines in ASCII (1, 10, 100, ...)

Enquire number of lines

```
SOH F B A A - - w p p p p p p p p ETB
```

Answer

```
SOH A N - - - - - p p p p p p p p ETB
```

Start/Stop Command

In addition to the actual start/stop command, the print order can also be interrupted via the parameter/remote record.

```
SOH F D - - - - r N - - - - - ETB
```

N: 0 = stop printing

N: 1 = continue printing

N: 2 = cancel print order if it is already stopped

Reset error

Reset error

```
SOH F C M H - - r N N N N - - - - ETB
```

NNNN = current error ID or '9999'

Enquire error

```
SOH F C M H - - w p p p p p p p p ETB
```

Answer

```
SOH A N N N N 0 0 0 0 p p p p p p p p ETB
```

Readout error ID and error text

```
SOH F C M H A - w p p p p p p p p ETB
```

Answer

```
SOH A N N N N ; error text ; p p p p p p p p ETB
```

Item number of print order

By means of this command the Host computer can enquire following item numbers:

Total number of current print order

SOH	F	B	B	A	-	-	w	p	p	p	p	p	p	p	p	p	ETB
-----	---	---	---	---	---	---	---	---	---	---	---	---	---	---	---	---	-----

Number of labels which are still to print

SOH	F	B	B	B	-	-	w	p	p	p	p	p	p	p	p	p	ETB
-----	---	---	---	---	---	---	---	---	---	---	---	---	---	---	---	---	-----

Number of already printed labels

SOH	F	B	B	C	-	-	w	p	p	p	p	p	p	p	p	p	ETB
-----	---	---	---	---	---	---	---	---	---	---	---	---	---	---	---	---	-----

Interval in cutter mode

SOH	F	B	B	D	-	-	w	p	p	p	p	p	p	p	p	p	ETB
-----	---	---	---	---	---	---	---	---	---	---	---	---	---	---	---	---	-----

At the end of one of these commands the printer returns the corresponding number as ASCII value (4 res. 5 digits) in the answer set.

Answer

SOH	A	N	N	N	N	-	-	-	p	p	p	p	p	p	p	p	ETB
-----	---	---	---	---	---	---	---	---	---	---	---	---	---	---	---	---	-----

With this set it is also possible to transmit the item number of print order and the interval (in cutter mode) to the printer.

Item number of print order

SOH	F	B	B	A	-	-	r	N	N	N	N	N	-	-	-	ETB
-----	---	---	---	---	---	---	---	---	---	---	---	---	---	---	---	-----

NNNNN = 5 digits item number of order

Interval in cutter mode

SOH	F	B	B	D	-	-	r	N	N	N	N	-	-	-	-	ETB
-----	---	---	---	---	---	---	---	---	---	---	---	---	---	---	---	-----

NNNNN = interval

Reset interval counter in cutter mode

SOH	F	B	B	D	A	-	r	-	-	-	-	-	-	-	-	ETB
-----	---	---	---	---	---	---	---	---	---	---	---	---	---	---	---	-----

Readout interval counter in cutter mode

SOH	F	B	B	D	A	-	w	p	p	p	p	p	p	p	p	p	ETB
-----	---	---	---	---	---	---	---	---	---	---	---	---	---	---	---	---	-----

Answer

SOH	A	N	N	N	N	-	-	-	p	p	p	p	p	p	p	p	ETB
-----	---	---	---	---	---	---	---	---	---	---	---	---	---	---	---	---	-----

Start printing

```
SOH F B C - - - r S - - - - - - ETB
```

This command starts the print order which is actually set in the printer. The current parameters such as print mode, speed, initialization etc. are used.

S = x: sorted (e.g. pages 1-5, then again 1-5 etc. are printed)
 S = 1: unsorted (page 1 is printed x times, then page 2 x times, etc.)

```
SOH F B D - - - r S - - - - - - ETB
```

Start printing (see above) but without tear off offset.

```
SOH F B E - - - r n n n n n n n n ETB
```

With this command the printjob identifier which appears in "printing" res. "stopped" window is assigned to a print order. If only blanks are transmitted, then the printjob identifier is deleted and the display shows "noname".

Initialization of page handling

```
SOH F B F - - - r ETB
```

Selection of current page

```
SOH F B G - - - r P ETB
```

P = current page number [1 ... 9]

Select order of pages to be printed

```
SOH F B H - - - r P1 P2 P3 ETB
```

P₁; P₂;...= pages to be printed

Generation of page without print start

```
SOH F B I - - - r S ETB
```

With this command the corresponding page is only generated, i.e. no print start signal is sent.

S = x: sorted (e.g. pages 1-5, then again 1-5 etc. are printed)
 S = 1: unsorted (page 1 is printed x times, then page 2 x times, etc.)

Feed**Parameter set to release a feed**

SOH	F	E	-	-	-	-	r	-	-	-	-	-	-	-	-	-	-	-	-	ETB
-----	---	---	---	---	---	---	---	---	---	---	---	---	---	---	---	---	---	---	---	-----

Test print**Parameter set to release a test print**

SOH	F	F	-	-	-	-	r	-	-	-	-	-	-	-	-	-	-	-	-	ETB
-----	---	---	---	---	---	---	---	---	---	---	---	---	---	---	---	---	---	---	---	-----

Status print**Parameter set to print a status print**

SOH	F	C	M	Q	-	-	r	N	-	-	-	-	-	-	-	-	-	-	-	ETB
-----	---	---	---	---	---	---	---	---	---	---	---	---	---	---	---	---	---	---	---	-----

N: 0 = printer settings

N: 1 = bar codes

N: 2 = fonts

Cancel print orders**Parameter set to cancel all active print orders**

SOH	F	G	A	-	-	-	r	N	-	-	-	-	-	-	-	-	-	-	-	ETB
-----	---	---	---	---	---	---	---	---	---	---	---	---	---	---	---	---	---	---	---	-----

N: - = Cancel active print orders and delete all label data

N: 1 = Cancel active print orders and receive label data

With the execution of this command:

- possible upcoming errors are confirmed
- possible upcoming customized entries are cancelled

9.12 Emulation**Set emulation**

SOH	F	Z	-	-	-	-	r	N	-	-	-	-	-	-	-	-	-	-	-	ETB
-----	---	---	---	---	---	---	---	---	---	---	---	---	---	---	---	---	---	---	---	-----

N: 0 = CVPL (Carl Valentin Programming Language)

N: 1 = ZPL II® (Zebra Programming Language)

Enquire emulation

SOH	F	Z	-	-	-	-	w	p	p	p	p	p	p	p	p	p	p	p	p	ETB
-----	---	---	---	---	---	---	---	---	---	---	---	---	---	---	---	---	---	---	---	-----

Answer

SOH	A	N	-	-	-	-	-	-	p	p	p	p	p	p	p	p	p	p	p	ETB
-----	---	---	---	---	---	---	---	---	---	---	---	---	---	---	---	---	---	---	---	-----

10 Parameter Sets for Options

10.1 Cutter

Set cutter mode

```
SOH F C D D - - r N - - - - - - ETB
```

N: 0 = Cutter mode Off

N: 1 = Single cut

N: 2 = Mode 1 (without cutter offset), print number of pieces with cut after each label without backfeed

N: 3 = Mode 2 (with backfeed), print number of pieces with cut after each label with backfeed

N: 4 = Interval cut with final cut, transmit interval with later

N: 5 = Interval cut without final cut, transmit interval width later

N: 6 = Final cut (cut after print end)

Enquire cutter mode

```
SOH F C D D - - w p p p p p p p p ETB
```

Answer

```
SOH A N - - - - - - p p p p p p p p ETB
```

Set cutter offset

```
SOH F C S C A - r V N N N - - - - ETB
```

V: pre-sign of offset (always +)

NNN: offset value, 3 digit ASCII number in 1/10 mm

Enquire cutter offset

```
SOH F C S C A - w p p p p p p p p ETB
```

Answer

```
SOH A V N N N - - - - p p p p p p p - ETB
```

Set control

```
SOH F C S C D - r M - - - - - - ETB
```

M: 0 = automatic cutter mode

M: 1 = external, cut can be effected by I/O

Enquire control

```
SOH F C S C D - w p p p p p p p p ETB
```

Answer

```
SOH A M - - - - - x p p p p p p p p ETB
```

Set automatic return On/Off

SOH	F	C	S	C	F	-	r	N	-	-	-	-	-	-	-	-	ETB
-----	---	---	---	---	---	---	---	---	---	---	---	---	---	---	---	---	-----

N: 0 = Off
N: 1 = On (default)

Enquire automatic return On/Off

SOH	F	C	S	C	F	-	w	p	p	p	p	p	p	p	p	p	ETB
-----	---	---	---	---	---	---	---	---	---	---	---	---	---	---	---	---	-----

Answer

SOH	A	N	-	-	-	-	-	-	p	p	p	p	p	p	p	p	ETB
-----	---	---	---	---	---	---	---	---	---	---	---	---	---	---	---	---	-----

10.2 Dispenser I/O

Set dispenser mode

SOH	F	C	D	C	-	-	r	N	-	-	-	-	-	-	-	ETB
-----	---	---	---	---	---	---	---	---	---	---	---	---	---	---	---	-----

N: 0 = Dispenser mode Off

N: 1 = External I/O static

N: 2 = Dispenser photocell

N: 3 = External I/O static continuous

N: 4 = Dispenser photocell continuous

N: 5 = External I/O dynamic

N: 6 = External I/O dynamic continuous

Enquire dispenser mode

SOH	F	C	D	C	-	-	w	p	p	p	p	p	p	p	p	ETB
-----	---	---	---	---	---	---	---	---	---	---	---	---	---	---	---	-----

Answer

SOH	A	N	-	-	-	-	-	p	p	p	p	p	p	p	p	ETB
-----	---	---	---	---	---	---	---	---	---	---	---	---	---	---	---	-----

Set dispenser level photocell

SOH	F	C	C	F	-	-	r	V	N	N	-	-	-	-	ETB
-----	---	---	---	---	---	---	---	---	---	---	---	---	---	---	-----

V = pre-sign of offset (always +)

NN = offset value, 2 digit ASCII number in 1/10 Volt (5 ... 40)

Enquire dispenser level photocell

SOH	F	C	C	F	-	-	w	p	p	p	p	p	p	p	p	ETB
-----	---	---	---	---	---	---	---	---	---	---	---	---	---	---	---	-----

Answer

SOH	A	V	N	N	-	-	-	-	p	p	p	p	p	p	p	ETB
-----	---	---	---	---	---	---	---	---	---	---	---	---	---	---	---	-----

Set sensitivity of dispenser photocell

SOH	F	C	C	F	A	-	r	N	N	N	-	-	-	-	ETB
-----	---	---	---	---	---	---	---	---	---	---	---	---	---	---	-----

NNN = Indication of photocell sensitivity

3 digit ASCII number (001 ... 255)

Enquire sensitivity of dispenser photocell

SOH	F	C	C	F	A	-	w	p	p	p	p	p	p	p	p	ETB
-----	---	---	---	---	---	---	---	---	---	---	---	---	---	---	---	-----

Answer

SOH	A	V	N	N	-	-	-	-	p	p	p	p	p	p	p	ETB
-----	---	---	---	---	---	---	---	---	---	---	---	---	---	---	---	-----

Enquire status of I/O inputs

SOH F C M D A - w p p p p p p p p ETB

Answer

SOH A 1 2 3 4 5 6 7 8 p p p p p p p p ETB

Inputs 1-8 / IO port 1-8:

- 1 = Port active
- 0 = Port not active
- = Port not connected, signal blocked or output

Enquire status of I/O inputs

SOH F C M D A B w p p p p p p p p ETB

Answer

SOH A 1 2 3 4 5 6 7 8 9 10 11 12 13 14 15 16 p p p p p p p p ETB

Inputs 1-16 / IO port 1-16:

- 1 = Port active
- 0 = Port not active
- = Port not connected, signal blocked or output

Enquire status of I/O outputs

SOH F C M D B - w p p p p p p p p ETB

Answer

SOH A 1 2 3 4 5 6 7 8 p p p p p p p p ETB

Outputs 1-8 / IO port 9-16:

- 1 = Port active
- 0 = Port not active
- = Port not connected, signal blocked or input

Enquire status of I/O outputs

SOH F C M D B B w p p p p p p p p ETB

Answer

SOH A 1 2 3 4 5 6 7 8 9 10 11 12 13 14 15 16 p p p p p p p p ETB

Outputs 1-16 / IO port 1-16:

- 1 = Port active
- 0 = Port not active
- = Port not connected, signal blocked or input

Set IN signal level

SOH	F	C	M	D	C	-	r	1	2	3	4	5	6	7	8	ETB
-----	---	---	---	---	---	---	---	---	---	---	---	---	---	---	---	-----

IO port 1-8 (dispenser inputs 1-8):

- 2 = Increased and decreased
- 1 = Increased
- 0 = Decreased
- s = I/O signal by interface
- x = I/O signal blocked

Only possible for IO ports that are specified as input.

Enquire IN signal level

SOH	F	C	M	D	C	-	w	p	p	p	p	p	p	p	p	ETB
-----	---	---	---	---	---	---	---	---	---	---	---	---	---	---	---	-----

Answer

SOH	A	1	2	3	4	5	6	7	8	p	p	p	p	p	p	p	ETB
-----	---	---	---	---	---	---	---	---	---	---	---	---	---	---	---	---	-----

Set IN signal level

SOH	F	C	M	D	C	B	r	1	2	3	4	5	6	7	8	9	10	11	12	13	14	15	16	ETB
-----	---	---	---	---	---	---	---	---	---	---	---	---	---	---	---	---	----	----	----	----	----	----	----	-----

IO port 1-16 (dispenser inputs 1-16):

- 2 = Increased and decreased
- 1 = Increased
- 0 = Decreased
- s = I/O signal by interface
- x = I/O signal blocked

Only possible for IO ports that are specified as input.

Enquire IN signal level

SOH	F	C	M	D	C	B	w	p	p	p	p	p	p	p	p	p	ETB
-----	---	---	---	---	---	---	---	---	---	---	---	---	---	---	---	---	-----

Answer

SOH	A	1	2	3	4	5	6	7	8	9	10	11	12	13	14	15	16	p	p	p	p	p	p	p	p	ETB
-----	---	---	---	---	---	---	---	---	---	---	----	----	----	----	----	----	----	---	---	---	---	---	---	---	---	-----

Set OUT signal level

SOH	F	C	M	D	D	-	r	1	2	3	4	5	6	7	8	ETB
-----	---	---	---	---	---	---	---	---	---	---	---	---	---	---	---	-----

IO port 9-16 (dispenser outputs 1-8):

- 1 = Signal level 1
- 0 = Signal level 0
- s = I/O signal by interface
- x = I/O signal blocked

Only possible for IO ports that are specified as output.

Enquire OUT signal level

SOH	F	C	M	D	D	-	w	p	p	p	p	p	p	p	p	ETB
-----	---	---	---	---	---	---	---	---	---	---	---	---	---	---	---	-----

Answer

SOH	A	1	2	3	4	5	6	7	8	p	p	p	p	p	p	p	ETB
-----	---	---	---	---	---	---	---	---	---	---	---	---	---	---	---	---	-----

Set OUT signal level

SOH	F	C	M	D	D	B	r	1	2	3	4	5	6	7	8	9	10	11	12	13	14	15	16	ETB
-----	---	---	---	---	---	---	---	---	---	---	---	---	---	---	---	---	----	----	----	----	----	----	----	-----

IO port 1-16 (dispenser output 1-16):

- 1 = Signal level 1
- 0 = Signal level 0
- s = I/O signal by interface
- x = I/O signal blocked

Only possible for IO ports that are specified as output.

Enquire OUT signal level

SOH	F	C	M	D	D	B	w	p	p	p	p	p	p	p	p	p	p	ETB
-----	---	---	---	---	---	---	---	---	---	---	---	---	---	---	---	---	---	-----

Answer

SOH	A	1	2	3	4	5	6	7	8	9	10	11	12	13	14	15	16	p	p	p	p	p	p	p	ETB
-----	---	---	---	---	---	---	---	---	---	---	----	----	----	----	----	----	----	---	---	---	---	---	---	---	-----

Set software input

SOH	F	C	M	D	F	-	r	1	2	3	4	5	6	7	8	ETB
-----	---	---	---	---	---	---	---	---	---	---	---	---	---	---	---	-----

IO port 1-8 (dispenser inputs 1-8):

- 1 = Set software input
- 0 = Delete software input
- = Ignore software input
- P = Pulse, run software input once

Only possible for IO ports whose input signal levels are activated for interface.

Example: Activate a start impulse
 (SOH) FCMDF-rP----- (ETB)

Set software input

SOH	F	C	M	D	F	B	r	1	2	3	4	5	6	7	8	9	10	11	12	13	14	15	16	ETB
-----	---	---	---	---	---	---	---	---	---	---	---	---	---	---	---	---	----	----	----	----	----	----	----	-----

IO port 1-16 (dispenser inputs 1-16):

- 1 = Set software input
- 0 = Delete software input
- = Ignore software input
- P = Pulse, run software input once

Only possible for IO ports whose input signal levels are activated for interface.

An IO port that was set (1) must be deleted (0) first to activate a function when next setting (1).

Example: Activate a start impulse
 (SOH) FCMDFB-rP----- (ETB)

Set software output

SOH	F	C	M	D	G	-	r	1	2	3	4	5	6	7	8	ETB
-----	---	---	---	---	---	---	---	---	---	---	---	---	---	---	---	-----

IO Port 9-16 (dispenser outputs 1-8):

- 1 = Set software output
- 0 = Delete software output

Only possible for IO ports whose output signal levels are activated for interface.

Set software output

SOH	F	C	M	D	G	B	r	1	2	3	4	5	6	7	8	9	10	11	12	13	14	15	16	ETB
-----	---	---	---	---	---	---	---	---	---	---	---	---	---	---	---	---	----	----	----	----	----	----	----	-----

IO Port 1-16 (dispenser outputs 1-16):

- 1 = Set software output
- 0 = Delete software output

Only possible for IO ports whose output signal levels are activated for interface.

Set dispenser offset

SOH	F	C	S	D	A	-	r	V	N	N	N	-	-	-	-	ETB
-----	---	---	---	---	---	---	---	---	---	---	---	---	---	---	---	-----

V = prefix of offsets (always +)

NNN = offset value, 3 digit ASCII number in 1/10 mm

Enquire dispenser offset

SOH	F	C	S	D	A	-	w	p	p	p	p	p	p	p	p	p	ETB
-----	---	---	---	---	---	---	---	---	---	---	---	---	---	---	---	---	-----

Answer

SOH	A	V	N	N	N	-	-	-	-	p	p	p	p	p	p	p	p	ETB
-----	---	---	---	---	---	---	---	---	---	---	---	---	---	---	---	---	---	-----

Set signal for debounce time

SOH	F	C	S	D	C	-	r	N	N	N	-	-	-	-	ETB
-----	---	---	---	---	---	---	---	---	---	---	---	---	---	---	-----

NNN = Signal for debounce time in ms (0 ... 100)

Enquire signal for debounce time

SOH	F	C	S	D	C	-	w	p	p	p	p	p	p	p	p	p	ETB
-----	---	---	---	---	---	---	---	---	---	---	---	---	---	---	---	---	-----

Answer

SOH	A	N	N	N	-	-	-	-	p	p	p	p	p	p	p	p	ETB
-----	---	---	---	---	---	---	---	---	---	---	---	---	---	---	---	---	-----

Set start signal delay

SOH F C S D D - r N N N - - - - - ETB

NNN = start signal delay in 1/100 s (0 ... 999)

Enquire start signal delay

SOH F C S D D - w p p p p p p p p ETB

Answer

SOH A N N N - - - - - p p p p p p p p ETB

Set save start signal

SOH F C S D E - r N - - - - - - - - ETB

N: 0 = Off

N: 1 = On

Enquire save start signal

SOH F C S D E - w p p p p p p p p ETB

Answer

SOH A N - - - - - - - - p p p p p p p p ETB

Set cancel continuous printing (operating mode)

SOH F C S D F A r N - - - - - - - - ETB

N: 0 = Off

N: 1 = On

Enquire cancel continuous printing (operating mode)

SOH F C S D F A w p p p p p p p p ETB

Answer

SOH A N - - - - - - - - p p p p p p p p ETB

Dispenser photocell**Enquire status of dispenser photocell**

SOH F C M B E A w p p p p p p p p ETB

Answer

SOH A N - - - - - - - - p p p p p p p p ETB

N: 0 = no label at photocell

N: 1 = label at photocell

The set switching threshold of dispenser photocell is taken into consideration.

10.3 Scanner

Set scanner operating mode

SOH	F	C	D	M	-	-	r	M	P	N	F	-	-	-	-	ETB
-----	---	---	---	---	---	---	---	---	---	---	---	---	---	---	---	-----

M: 0 = Scanner mode Off

M: 1 = Mode 1 (data comparison)

M: 2 = Mode 2 (check only readable)

M: 3 = Mode 3 (check readability, graphic)

P: 0 = Interface COM1

P: 1 = Interface COM2

P: 1 = This parameter is ignored as COM2 is always used as scanner interface at the moment.

N: - = 0 bad readings (NoReads)

N: 0 = 1 bad reading

N: 1 = 2 bad readings

N: 2 = 3 bad readings

N: 3 = 4 bad readings

N: 4 = 5 bad readings

N: 5 = 6 bad readings

N: 6 = 7 bad readings

N: 7 = 8 bad readings

N: 8 = 9 bad readings

Number of consecutive bad readings after which an error message appears.

At '-' (0 NoReads) no error message appears, i.e. the print is not interrupted. Only a warning is displayed at the screen.

F: 0 = No label feed (FeedLabel)

F: 1 = 1 label is fed

F: 2 = 2 labels are fed

F: 3 = 3 labels are fed

F: 4 = 4 labels are fed

F: 5 = 5 labels are fed

Enquire scanner operating mode

SOH	F	C	D	M	-	-	w	p	p	p	p	p	p	p	p	p	ETB
-----	---	---	---	---	---	---	---	---	---	---	---	---	---	---	---	---	-----

Answer

SOH	A	M	P	N	F	-	-	-	p	p	p	p	p	p	p	p	ETB
-----	---	---	---	---	---	---	---	---	---	---	---	---	---	---	---	---	-----

Set scan offset

SOH	F	C	D	M	A	-	r	N	N	N	N	-	-	-	-	ETB
-----	---	---	---	---	---	---	---	---	---	---	---	---	---	---	---	-----

N = scan offset in 1/10 mm

Enquire scan offset

SOH	F	C	D	M	A	-	w	p	p	p	p	p	p	p	p	p	ETB
-----	---	---	---	---	---	---	---	---	---	---	---	---	---	---	---	---	-----

Answer

SOH	A	N	N	N	N	-	-	-	p	p	p	p	p	p	p	p	ETB
-----	---	---	---	---	---	---	---	---	---	---	---	---	---	---	---	---	-----

N = current scan offset in 1/10 mm

Set scan length

SOH F C D M B - r N N N N - - - - ETB

N = scan length in 1/10 mm

Enquire scan length

SOH F C D M B - w p p p p p p p p ETB

Answer

SOH A N N N N N - - - - p p p p p p p p ETB

N = current scan length in 1/10 mm

Set scan mode

SOH F C D M C - r N N N N - - - - ETB

N: 0 = scanning during printing

N: 1 = scanning after printing

Enquire scan mode

SOH F C D M C - w p p p p p p p p ETB

Answer

SOH A N - - - - - p p p p p p p p ETB

N = current scan mode

Set scan delay (scanning after printing)

SOH F C D M D - r N N N N - - - - ETB

N = scan delay in ms [0 ... 9990]

Enquire scan delay

SOH F C D M D - w p p p p p p p p ETB

Answer

SOH A N N N N N - - - - p p p p p p p p ETB

N = current scan delay in ms

Set scan timeout (scanning after printing)

SOH F C D M E - r N N N N - - - - ETB

N = scan timeout in ms [0 ... 9990]

Enquire scan timeout

SOH F C D M E - w p p p p p p p p ETB

Answer

SOH A N N N N N - - - - p p p p p p p p ETB

N = current scan timeout in ms

Set scanner type

SOH	F	C	D	M	F	-	r	N	N	N	N	-	-	-	-	ETB
-----	---	---	---	---	---	---	---	---	---	---	---	---	---	---	---	-----

N: 0 = SICK CLP100

N: 1 = SICK CLV4XX

N: 2 = DATALOGIC DS2XXX

N: 3 = SICK ICR803

N: 4 = SICK ICR840

Enquire scanner type

SOH	F	C	D	M	F	-	w	p	p	p	p	p	p	p	p	p	ETB
-----	---	---	---	---	---	---	---	---	---	---	---	---	---	---	---	---	-----

Answer

SOH	A	N	-	-	-	-	-	p	p	p	p	p	p	p	p	p	ETB
-----	---	---	---	---	---	---	---	---	---	---	---	---	---	---	---	---	-----

N = currently set scanner type

Scanner Variable

In mode 1 (data comparison) it is necessary to fix the order of bar code data to scan several codes onto one label. Because of this reason bar code data has to be defined as scanner variable in text sets. The text set has the following structure:

SOH	BM	[n]	=	S	V	(a	;	f)	text data	ETB
-----	----	-----	---	---	---	---	---	---	---	---	-----------	-----

=SV: identification scanner variable

a: field active (0 = not active, 1 = active, i.e. code is scanned)

f: field number for definition of code order (1 ...)

Examples:

Fixed text:

(SOH)BM[1]=SV(1;1)123456(ETB)

Variable text (counter):

(SOH)BM[1]=SV(1;1)=CN(10;0;4;+1;1)0001(ETB)

10.4 WLAN (Wireless Local Area Network)

Enquire connection status

SOH F C W C - - w p p p p p p p p p ETB

N: 0 = not connected

N: 1 = connected

Answer

SOH A N i p p p p p p p p p ETB

Set DHCP support

SOH F C W D - - r x ETB

x: 0 = Offs

x: 1 = On

Enquire DHCP support

SOH F C W D - - w p p p p p p p p p ETB

Answer

SOH A x i p p p p p p p p p ETB

Set encryption type

SOH F C W E - - r x ETB

x: 0 = Off

x: 1 = WEP64

x: 2 = WEP128

x: 3 = WPA

x: 4 = WPA2

Enquire encryption type

SOH F C W E - - w p p p p p p p p p ETB

Answer

SOH A x ; p p p p p p p p p ETB

Readout MAC address

SOH F C W F - - w p p p p p p p p p ETB

Answer

SOH A N ; p p p p p p p p p ETB

N: Character string

Set Gateway address (e.g. 192.168.1.2)

SOH F C W G - - r x ETB

x = 192.168.1.2

Enquire Gateway address

SOH F C W G - - w p p p p p p p p p ETB

Answer

SOH A 1 9 2 . 1 6 8 . 1 . 2 ; p p p p p p p p p ETB

Set IP address (e.g. 192.168.1.21)

SOH F C W I - - r x ETB

x = 192.168.1.21

Enquire IP address

SOH F C W I - - w p p p p p p p p p ETB

Answer

SOH A 1 9 2 . 1 6 8 . 1 . 2 1 ; p p p p p p p p p ETB

Set WPA/WPA2 encryption

SOH F C W K - - r x ETB

x = Hex string, 64 characters or ASCII, max. 63 characters

Answer

SOH A x ; ETB

Set netmask (e.g. 255.255.255.0)

SOH F C W M - - r x ETB

x = 255.255.255.0

Enquire netmask

SOH F C W M - - w p p p p p p p p p ETB

Answer

SOH A 2 5 5 . 2 5 5 . 2 5 5 . 0 ; p p p p p p p p p ETB

Enquire server port (e.g. 9001)

SOH F C W P - - w p p p p p p p p p ETB

Value range for x = 1 ... 65535

Answer

SOH A 9 0 0 1 ; p p p p p p p p p ETB

Readout anew configuration from WLAN module and transfer to the printer

SOH F C W R - - r p p p p p p p p ETB

Answer

SOH A N ; p p p p p p p p ETB

N: OK

N: Error

Set SSID (Service Set Identifier) identification (e.g. TESTWLAN)

SOH F C W S - - r x ETB

x = TESTWLAN

Enquire SSID identification

SOH F C W S - - w p p p p p p p p ETB

Answer

SOH A T E S T W L A N ; p p p p p p p p ETB

Set WEP64 encryption

SOH F C W V - - r x ETB

x = Hex string, 10 characters

Answer

SOH A x ; ETB

Set WEP128 encryption

SOH F C W W - - r x ETB

x = Hex string, 26 characters

Answer

SOH A x ; ETB

Save settings and restart of WLAN module

SOH F C W X - - r - - - - - - - - ETB

Answer

SOH A N i p p p p p p p p ETB

N: OK

N: Error

Set high speed data connection

SOH F C W H - - r x ETB

This setting is specified at the printer and if an active connection to the WLAN module exists, in the WLAN module, too. Subsequently the printer is again started.

x: 0 = Normal speed (115200 baud, no handshake)

x: 1 = High speed (921600 baud (adjustable),
RTS/CTS handshake)

Enquire high speed data connection

SOH F C W H - - w p p p p p p p p ETB

Answer

SOH A x p p p p p p p p ETB

Set high speed baud rate

SOH F C W B - - r b ETB

This setting is specified at the printer and if an active connection to the WLAN module exists, in the WLAN module, too. Subsequently the printer is again started.

b = Baud rate (115200, 230400, 460800, 921600)

Enquire high speed baud rate

SOH F C W B - - w p p p p p p p p ETB

Answer

SOH A b p p p p p p p p ETB

11 Configuration & Status

Save configuration permanent

In case you want to save the described settings permanent into the printer, then you have to transmit the following command to the printer.

```
SOH F X - - - - r N - - - - - - - - ETB
```

N: 0 = save current parameter
 N: 1 = set all parameters to default values
 The the printer performs a restart

Read configuration

```
SOH F X - - - - w - - - - - - - - ETB
```

The printer sends as answer all current settings as parameter sets.

Status enquiry

Host computer can receive information about the printer by the serial interface.

The status enquiry has the following data format:

```
SOH S ETB
```

Status return information

After receiving the status enquiry the printer sends the corresponding status return information.

Data format of status enquiry

SOH 1. Byte 2. Byte 5.-1. digit ETB
 8 7 6 5 4 3 2 1 8 7 6 5 4 3 2 1

1. Byte	=	1. Status byte
		8. Bit = free 7. Bit = always set 6. Bit = free 5. Bit = 1 = running print order 0 = no. of items (0 = no print order) 4. Bit = 1 = press stop key 0 = not pressed stop key 3. Bit = cutter error (0 = no error; 1 = error) 2. Bit = label material (0 = no error; 1 = error) 1. Bit = transfer ribbon (0 = no error; 1 = error)
2. Byte	=	2. Status byte
		8. Bit – 4. Bit = free 3. Bit = Compact Flash card 2. Bit = Mask set 1. Bit = Printhead temperature
5.-1. digit	=	number of pieces with 5 digits as ASCII characters min. '00000' / max. '65535'

11.1 Autostatus

The printers are equipped with an auto status function, i.e. in certain operating modes the printer actively sends the corresponding status. This can be enquired by the serial interface.

To activate the auto status, the host computer has to send the following command to the printer:

```
SOH G 1. Byte 2. Byte ETB
```

Each of the below indicated message which is observed and send by the printer has to be transmitted with a set Bit (see table below 1. Byte and 2. Byte) to the printer by means of auto state function. The printer sends after each performed condition the corresponding message (answer) to the host computer.

The following messages are provided:

1 Start of generation

2 End of generation

The printer sends this state in case data for a complete label was generated. The test print was not taken into consideration. For counters/date variables the printer sends for each label a status cycle (start, end).

3 Start of printing

4 End of printing

The start of the print is send in case the generated data is send. The end of the print is send in case the print of the label is finished and the motor has stopped.

5 Start of cutting

6 End of cutting

This status describes the cutting. It can be checked for timeout and the end of the cut movement → error.

7 Start of feeding

8 End of feeding

This status is send in case an additional feeding (dispenser, cutter, tear off) is released.

9 Start of a print order

10 End of print order

This status signalizes the start and end of a complete print order (1...99999 labels). This status is active in all operating modes.

11 Error

This status message is send in case an error occurs.

12 Printing stopped

This message is send if the printing is stopped.

13 Printing resumed

This message is send if the printing is resumed.

The printer sends the auto status in the following format to the host computer:

SOH	G	1. Byte	2. Byte	ETB
-----	---	---------	---------	-----

1. Byte

- | | |
|------------------------------|------------------------|
| 8. Bit = start of generation | 4. Bit = start cutting |
| 7. Bit = end of generation | 3. Bit = end of cut |
| 6. Bit = start printing | 2. Bit = start feeding |
| 5. Bit = end of print | 1. Bit = always 0 |

2. Byte

- | | |
|-------------------------------|---------------------------|
| 8. Bit = end of label feed | 4. Bit = free |
| 7. Bit = start of print order | 3. Bit = Printing stopped |
| 6. Bit = end of print order | 2. Bit = Printing resumed |
| 5. Bit = error | 1. Bit = always 0 |



HINWEIS!

Bit 1 has to be in 1. Byte and 2. Byte always 0, otherwise the printer possibly could recognize SOH or ETB.

At the status message of the printer to the host computer always at least 1 Bit is set. However, it could be occur that several Bits are set at the same time.

At the status demand of the host computer to the printer it is also possible that several Bits are set at the same time.

The auto status demand is saved in the printer, i.e. it is set to 0 after switching off/on. Therefore it is necessary to demand it anew after each time the printer is switched on.

Example

The printer should observe the start of a print order. For this the host computer sends the following demand to the printer.

SOH	G	00000000	01000000	ETB
-----	---	----------	----------	-----

After the condition is fulfilled (= start of the print order) the printer sends the following message to the host computer:

SOH	G	00000000	01000000	ETB
-----	---	----------	----------	-----

With regard to the contents the answer corresponds always to the format set.

12 Monitored Printing

This protocol replaces the outdated Autostatus. In contrary to the Autostatus, this is not a binary protocol but a text-based protocol sending the commands as English clear text. The advantage is a very fast and simple error tracing and development. The disadvantage of a larger data volume plays nowadays a smaller role.

12.1 Short Introduction

In order to activate monitored printing:

(SOH)FHM---rSE(ETB)

(SOH)FHA---r2(ETB)

12.2 Parameter Sets (Host – Printer)

Formatting: # - SOH * - ETB

Command: Set monitoring mode.

Syntax: #FHM---rSEPnnnCnFn*

Example: #FHM---rSP10E*

Description: Activates the forwarding of certain events to the server. The results are:

S - (start/stop): print start, print end, stop printing, continue printing, cancel printing.

E – (error): Error occurred, error confirmed.

C – (photocell): Activates the photocell test (n=1)/disable (n=0)

F – Activates the encoder profile (n=1)/disable (n=0)

P – (progress): Print progress, indicates the number of already printed labels. In standard case, the interval between two events is a label. If a number behind the flag is indicated, an event every *nnn* labels is released (see example). With column printing the event is released, as soon as the entered interval was reached or exceeded for the first time (example: 3 columns, interval 4, 20 labels in total. Event at label 6,9,12 and 18).

Command: Activate, disable the monitoring.

Syntax: #FHA---rn*

Example: #FHA---r2*

Description: activated, deactivates the monitoring (n=[0,2]);
,0' – enables the monitoring after completion of print order,
,1' – reserved
,2' – activates the monitoring for the current port.

12.3 Direct Enquiry

Command: Requests print status.

Syntax: #FHS---r*

Example: #FHS---r*

Description: Invites the client to send the current status.

Command: User command to the sender of print order.

Syntax: #FHU---rDaten*

Example: #FHU---rSE*

Description: Sends #Data* to the sender of print order.
Max 100 characters.

12.4 Answer Sets (Printer – Host)

Event: Print start

Set: #HSStart-*Pagename-Labelsrequested**

Example: #HSStart-NoName1-100*

Description: Indicates the start of a print order, including page name and number of labels to be printed.

Event: Printing completed

Set: #HSDone-*Pagename-Labelsprinted**

Example: #HSDone-NoName1-100*

Description: Indicates the completion of a print order including page name and number of printed labels.

Event: Printing stopped

Set: #HSHold-*Pagename-Labelsprinted**

Example: #HSHold-NoName1-10*

Description: Indicates the stopping of print order including page name and number of printed labels. Occurs when the user stopped the print order and/or after occurrence of an error.

Event: Continue printing

Set: #HSContinue-*Pagename-Labelsprinted**

Example: #HSContinue-NoName1-55*

Description: Indicates the continuation of print order including page name and number of printed labels. Occurs when the user restarts the print order.

Event: Cancel printing

Set: #HSAborted-*Pagename-Labelsprinted**

Example: #HSAborted-NoName1-57*

Description: Indicates the cancelation of printing including page name and number of printed labels.

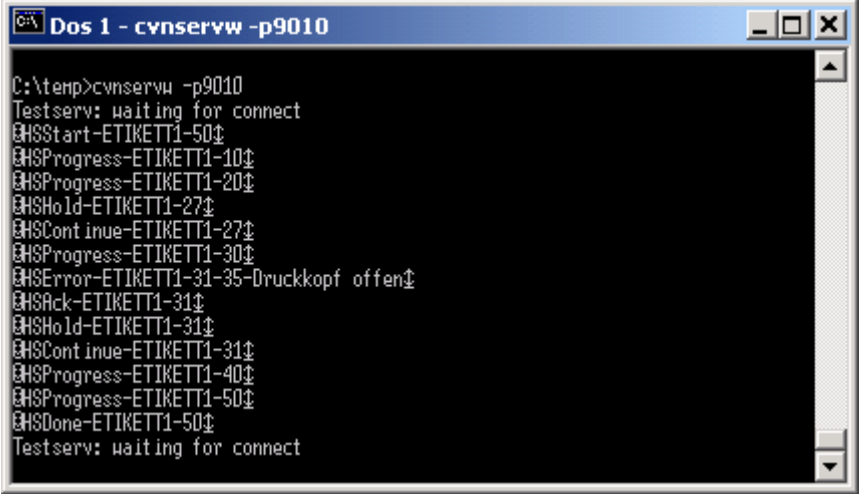
Event: Error**Set:** #HSError-*Pagename-Labelsprinted-ErrorID-Errormessage****Example:** #HSError-NoName1-57-28-Messerfehler***Description:** Indicates the occurrence of an error including page name, number of printed labels, error ID and error text.**Event:** Error confirmation at printer**Set:** #HSAck-*Pagename-Labelsprinted* ***Example:** #HSAck-NoName1-57***Description:** Indicates the confirmation of an error including page name and number of printed labels.**Event:** Print progress**Set:** #HSProgress-*Pagename-Labelsprinted* ***Example:** #HSProgress-NoName1-60***Description:** Indicates the progress of print order including page name and number of printed labels. This event is also returned as answer to status enquiry, if the printer is printing.**Event:** Photocell value**Set:** #HSPhotocell-DLS:xxx-RLS:xxx***Example:** #HSPhotocell-DLS:3.8-RLS:1.9***Description:** Returns the values of transmission and reflexion photocell. The verification takes place every 5 ms; only changes are sent.**Event:** Encoder profile**Set:** # HSEnc-Dist:xxx-Speed:xxx***Example:** # HSEnc-Dist:120-Speed:202***Description:** Generates the profile of speed development of the packaging machine during a print order.**Event:** Answer to status enquiry (#FHS---r*)**Description:** The respective current print event is returned.

12.5 Sample Label

A simple label with monitoring of all parameters with output of the progress – all 10 labels could look as following:

```
FHM---rSP10E
//Ueberwachung einschalten
FHA---r2
// JOBNAME: "ETIKETT1"
FBE---rETIKETT1
// TYPE: Endlosetiketten
// HEIGHT: 20.00 mm
// GAPLENGTH: 2.00 mm
// COLUMNS: 1
// COLUMN DISTANCE: 100.00 mm
FCDA--r1-----
FCCL--r0002000-
FCCM--r00000---
FCCHA-r1-----
FCCHB-r999-----
// SPEED: 50 mm/s
FCAA--r050-----
// CONTRAST: 200%
FCAB--r200-----
// LABELCONTROL: 0
FCDE--r0-----
// RIBBONCONTROL: 1
// RIBBONSENS: 0
FCDB--r10-----
// MATERIAL: Typ 1
FCDNA-r0-----
FCDNB-r1-----
FCDNC-r0000----
// SCAN MODE: 0
// SCAN PORT: 0
// NO READ: 0
// FEED LABEL: 0
FCDM--r0000----
// MIRROR LABEL: Nein
FCDO--r0-----
// TEXT (1/100 mm)
AM[1]1407;6907;0;4;0;3;398;398;8
BM[1]Test
// SETLINENO: 1 lines
FBAA--r1
// SETCOPIES: 1
FBBA--r00050---
// PRINT
FBC---r-----
```

The server output, for example, looks as follows:



```
Dos 1 - cvnservw -p9010
C:\temp>cvnservw -p9010
Testserv: waiting for connect
@MSstart-ETIKETT1-50
@MSProgress-ETIKETT1-10
@MSProgress-ETIKETT1-20
@MSHold-ETIKETT1-27
@MSContinue-ETIKETT1-27
@MSProgress-ETIKETT1-30
@MSError-ETIKETT1-31-35-Druckkopf offen
@MSAck-ETIKETT1-31
@MSHold-ETIKETT1-31
@MSContinue-ETIKETT1-31
@MSProgress-ETIKETT1-40
@MSProgress-ETIKETT1-50
@MSDone-ETIKETT1-50
Testserv: waiting for connect
```

13 Font Examples

13.1 Bitmap Fonts (Not Proportional)

Font 01 (8 x 11) Verhältnis 3:3
 Font 02 (12 x 17) Verhältnis 3:3
 Font 03 (18 x 26) Verhältnis 2:2
 Font 04 (40 x 56) Verhältnis 1:1
 Font 05 (18 x 32 mit Unterlängen) Verhältnis 2:2
 Font 07 (12 x 22 mit Unterlängen) Verhältnis 2:2

13.2 Bitmap Fonts (Proportional)

Font 21 (10 proportional) Verhältnis 3:3
 Font 22 (18 proportional) Verhältnis 2:2
 Font 23 (26 proportional) Verhältnis 2:2
 Font 24 (56 proportional) Verhältnis 1:1
 Font 28 (40 proportional) Verhältnis 1:1
 Font 29 (8 proportional) Verhältnis 5:5

13.3 Vector Fonts

Absender (Baskerville)	Das ist ein Musteretikett
<u>Gold, Petra (Swiss Light)</u>	für die Darstellung der
Name, Vorname (Helvetica Bold)	Schriftarten (Monospace)
<u>Goldstraße 456 (Swiss Light)</u>	
Straße, Hausnummer (Helvetica Bold)	
<u>23456 Golddorf (Swiss Light)</u>	
PLZ, Ort (Helvetica Bold)	
<i>Musterlieferung</i>	Empfänger (Baskerville)
<i>Bitte bestätigen Sie</i>	<u>Mustermann, Max (Helvetica Roman)</u>
<i>den Empfang. (Brush Script)</i>	Name, Vorname (Helvetica Bold)
	<u>Musterstraße 123 (Helvetica Roman)</u>
	Straße, Hausnummer (Helvetica Bold)
	<u>45678 Musterstadt (Helvetica Roman)</u>
	PLZ, Ort (Helvetica Bold)

14 Index

#

*FBAA, number of lines.....	89
*FBBA, total items of print order	90
*FBBB, labels still to print.....	90
*FBBC, already printed labels.....	90
*FBBD, interval (cutter)	90
*FBBDA, interval counter (cutter)	90
*FBC, start printing.....	91
*FBD, start printing (w/o tear-off offset)	91
*FBE, start printing (assign printjob identifier)	91
*FBF, initialisation of page handling	91
*FBG, selection of current page.....	91
*FBH, order of pages	91
*FBI, generation of page w/o print start	91
*FCAA, print speed	61
*FCAB, contrast	56
*FCB, measure label.....	53
*FCCA, label synchronization at switching on	65
*FCCB, buzzer	63
*FCCBB, contrast.....	64
*FCCD, y offset	73
*FCCE, x offset	73
*FCCF, dispenser level photocell	95
*FCCFA, sensitivity dispenser photocell.....	95
*FCCG, tear off offset	73
*FCCHA, column printing (no. of columns).....	55
*FCCHB, column printing (column width)	55
*FCCJ, alignment.....	55
*FCCK, keyboard layout	63
*FCCL, label length.....	54
*FCCM, gap length	54
*FCCN, codepage.....	62
*FCCO, label width	54
*FCCP, external printer parameters	62
*FCCR, zero point adjustment (y value)	75
*FCCT, zero point adjustment (x value).....	75
*FCDA, label type	53
*FCDB, transfer ribbon speed.....	61
*FCDC, operating mode (dispenser I/O).....	95
*FCDD, operating mode (cutter)	93
*FCDE, label photocell.....	53
*FCDEA, scan position	57
*FCDEB, sensitivity transmission photocell	58
*FCDEC, sensitivity reflexion photocell	58
*FCDGA, label error length	54
*FCDGB, synchronization	55
*FCDI, printer language	62
*FCDJC, CMI length	66
*FCDK, field handling.....	61
*FCDM, scanner operating mode	101
*FCDMA, scan offset	101
*FCDMB, scan length	102

*FCDMC, scan mode	102
*FCDMD, scan delay	102
*FCDME, scan timeout	102
*FCDMF, scanner type	103
*FCDN, rotate label	56
*FCDNC, material selection	57
*FCDND, rotate label in 90 degrees	57
*FCDO, flip label	56
*FCDS, flip/rotate label	56
*FCDU, customized entry	63
*FCDW, hotstart	64
*FCDX, autoloading	64
*FCFF, interface parameters	67
*FCGC, SOH/ETB.....	67
*FCGD, data memory	68
*FCGEA, reaction unknown questions	68
*FCHA, paper counter printer	79
*FCHB, paper counter printhead	79
*FCIA, date	79
*FCIB, time.....	79
*FCIG, automatic clock adjustment	80
*FCIH, beginning of summertime.....	81
*FCII, end of summertime	81
*FCIJ, time shifting.....	81
*FCKA, password.....	82
*FCKB, function group (password)	82
*FCKC, password active/inactive.....	83
*FCKDA, password function menu	83
*FCKDB, password favorites menu	83
*FCKDC, password memory card.....	83
*FCKDD, password printing manually	84
*FCLA, IP address (network)	69
*FCLB, netmask (network).....	69
*FCLC, gateway address (network).....	69
*FCLD, transmission mode (network).....	70
*FCLE, DHCP support (network)	70
*FCLF, printer name (network)	70
*FCLMB, MAC address (network)	70
*FCLNI, NTP Server IP (network).....	71
*FCLNS, NTP status (network).....	72
*FCLNZ, time zone (network)	72
*FCLZ, reset network device (network)	72
*FCMAA, label parameter A	59
*FCMAB, label parameter B	59
*FCMAC, label parameter C	59
*FCMBA, transfer ribbon photocell	59
*FCMBB, label photocell	60
*FCMBEA, dispenser photocell	60, 100
*FCMC, printhead temperature.....	76
*FCMDA, I/O inputs	96
*FCMDAB, I/O inputs	96
*FCMDB, I/O outputs	96
*FCMDBB, I/O outputs.....	96
*FCMDC, IN signal level	97
*FCMDCB, IN signal level.....	97
*FCMDD, OUT signal level	97
*FCMDDB, OUT signal level.....	98

*FCMDF, software input.....	98
*FCMDFB, software input	98
*FCMDG, software output.....	99
*FCMDGB, software output	99
*FCMG, printhead resistance	78
*FCMH, reset error.....	89
*FCMHA, error ID/error text	89
*FCMKC, online/offline.....	75
*FCMKD, reprint action	76
*FCMKE, standard label	64
*FCMLA, ribbon prior warning	76
*FCMLB, ribbon prior warning diameter	77
*FCMLC, ribbon diameter	77
*FCMLDA, mode (ribbon prior warning)	77
*FCMLDB, reduced speed (ribbon prior warning)	77
*FCMP, winder output.....	76
*FCMQ, status print	92
*FCMRA, backfeed operating mode	65
*FCMRB, backfeed delay.....	65
*FCMT, print length correction	78
*FCNRA, custom logo.....	78
*FCSCA, cutter offset.....	74
*FCSCA, offset (cutter)	93
*FCSCD, control (cutter).....	93
*FCSCF, automatic return (cutter)	94
*FCSDA, dispenser offset.....	74
*FCSDA, offset (dispenser I/O).....	99
*FCSDC, debounce time signal	99
*FCSDD, start signal delay	100
*FCSDE, save start signal	100
*FCSDFA, continuous printing (operating mode) cancel.....	100
*FCSDFC, label change confirmation	65
*FCWB, high speed baud rate (WLAN)	107
*FCWC, connection status.....	104
*FCWD, DHCP support.....	104
*FCWE, encryption type (WLAN).....	104
*FCWF, MAC address (WLAN)	104
*FCWG, gateway address (WLAN)	105
*FCWH, high speed data connection (WLAN).....	107
*FCWI, IP address (WLAN)	105
*FCWK, WPA/WPA2 encryption (WLAN)	105
*FCWM, netmask (WLAN)	105
*FCWP, server port (WLAN).....	105
*FCWR, readout and transfer configuration (WLAN).....	106
*FCWS, SSID identification (WLAN).....	106
*FCWV, WEP64 encryption (WLAN)	106
*FCWW, WEP128 encryption (WLAN)	106
*FCWX, save settings and restart (WLAN).....	106
*FD, start/stop command	89
*FE, feed	92
*FF, test print	92
*FGA, cancel print order	92
*FMA, save label (cf card).....	85
*FMB, load file (cf card)	85
*FMC, delete layout (cf card)	85
*FMD, format (cf card)	85
*FMG, table of contents (cf card).....	85

*FMH, memory space (cf card)	86
*FMI, create directory (cf card)	86
*FMJ, delete directory (cf card)	86
*FMJA, delete directory path (cf card)	86
*FMK, change directory (cf card)	86
*FMKB, standard directory via I/O (cf card)	87
*FML, transfer file (cf card)	87
*FMM, enquiry if the file exists (cf card)	87
*FMP, size of cf card	87
*FMS, drive status (cf card)	88
*FZ, emulation	92

A

autoload	64
----------------	----

B

backfeed	
delay	65
operating mode	65
buzzer	63

C

clock adjustment, automatical	
beginning of summertime	81
end of summertime	81
time shifting	81
codepage	62
column printing	55
compact flash card	
change directory	86
create directory	86
delete directory	86
delete directory path	86
delete layout	85
drive status	88
enquiry if the file exists	87
format card	85
Load file	85
readout free memory space	86
save label	85
size of cf card	87
standard directory via I/O	87
transfer file	87
configuration and status	
autostatus	110, 111
saving	109
status enquiry	109
status return information	109
configuration, readout and transfer (WLAN)	106
connection status (WLAN)	104
contrast	56, 64
custom logo	78
customized entry	63
cutter	
automatic return	94
control	93
mode	93
offset	74, 93

D

data format	
explanation	12
field attributes	13
field name	14, 15, 16, 17, 18
field properties	13
general information	11
Data format	
Field selection	18
data memory	68
date/time	
automatic clock adjustment	81
automatical clock adjustment	80
date	79
time	79
datum point (text, bar code, graphic)	9
DHCP support	
network	70
WLAN.....	104
dispenser I/O	
continuous printing (operating mode)	100
debounce time signal	99
dispenser level photocell	95
dispenser photocell.....	100
I/O inputs	96
I/O outputs	96
IN signal level	97
mode	95
Offset	99
OUT signal level	97, 98
save start signal	100
sensitivity dispenser photocell	95
software input	98
software output	99
start signal delay	100
dispenser photocell	60
dispenser, offset	74
display brightness.....	64

E

emulation	92
encryption (WLAN)	
type	104
WEP128.....	106
WEP64.....	106
WPA/WPA2	105
external printer parameters	62

F

feed.....	92
field handling	61
flip label	56
font examples	
bitmap fonts (not proportional).....	117
bitmap fonts (proportional).....	117
vector fonts	117
format identifier, date/time.....	41, 42, 43

G

gap length.....	54
gateway address	
network	69
WLAN.....	105
generation, selected page	91
graphic set	
general graphic format.....	35
PCX format	35, 36

H

high speed (WLAN)	
baud rate.....	107
data connection	107
hotstart.....	64

I

IN signal level (dispenser I/O)	97
initialisation of page handling	91
inputs I/O (dispenser I/O)	96
interface	
parameters.....	67
SOH/ETB	67
IP address	
network	69
WLAN.....	105

K

keyboard layout	63
-----------------------	----

L

label	
alignment	55
column printing	55
flip	56
label change confirmation.....	65
label error length.....	54
label photocell.....	53, 60
label type	53
length	54
measure	53
rotate.....	56
standard label	64
synchronization at switching on	65
width.....	54
label parameters	
column printing	55
contrast	56
flip label.....	56
gap length	54
label alignment.....	55
label error length.....	54
label length	54
label photocell.....	53
label rotation in 90 degrees	57
label type	53
label width.....	54
level maximal (label parameter B)	59
material selection.....	57

measure label	53
reflexion transmission photocell	58
rotate label	56
scan position	57
sensitivity transmission photocell	58
synchronization	55
label photocell	
level minimal (label parameter B)	59
switching threshold (label parameter C)	59
label rotation in 90 degrees	57
line number	89

M

MAC address	
network	71
WLAN	104
mask set	
bar code Aztec code	30
bar code CODABLOCK F	27
bar code DataMatrix	25
bar code GS1 DataMatrix	26
bar code MAXICODE	24
bar code PDF417	23
bar code QR Code	29
bar code, GS1 DataBar (RSS)	28
bar code, ITF	22
bar code, one-dimensional	21
internal graphic	32
line	31
rectangle	31
text	19, 20
material selection	57
measure, label	53
monitored printing	113, 114, 115, 116

N

netmask	
network	69
WLAN	105
network	
DHCP support	70
gateway address	69
IP address	69
MAC address	71
netmask	69
NTP server IP	71
NTP status	72
printer name	70
reset network device	72
time offser (hour offset)	72
transmission mode	70
NTP server IP	71
NTP status	72

O

offset values	
cutter	74
dispenser	74

tear off offset	73
x offset	73
y offset	73
online/offline	75
order (pages to print)	91
OUT signal level (dispenser I/O)	97, 98
outputs I/O (dispenser I/O)	96

P

paper counter	
printer	79
printhead	79
parallel data transmission, connection plan	7
parameter sets	
compact flash card	85, 86, 87, 88
data memory	68
date/time	79, 80, 81
emulation	92
interface	67
interface protocol	67
label parameters	53, 54, 55, 56, 57, 58
network	69, 70, 71, 72
offset values	73
password	82, 83, 84
password favorites menu	83
password function menu	83
password memory card	83
password printing manually	84
photocells	59, 60
printer parameters	61, 62, 63, 64, 65, 66
printing	89, 90, 91, 92
service functions	76, 77, 78
service funtions	75
parameter sets (options)	
cutter	93, 94
dispenser I/O	95, 96, 97, 98, 99, 100
scanner	101, 102, 103
WLAN	104, 105, 106, 107
password	82, 83, 84
photocell	
dispenser photocell	60
label photocell	53, 60
Level maximal (lable parameter A)	59
Level minimal (label parameter A)	59
switching threshold	59
transfer ribbon photocell	59
print length correction	78
print order, cancel	92
print speed	61
printer	
language	62
name	70
printer parameters	
autoload	64
backfeed, delay	65
backfeed, operating mode	65
buzzer	63
CMI length	66
codepage	62

contrast	64
customized entry.....	63
external printer parameters	62
field handling.....	61
hotstart	64
keyboard layout	63
label change confirmation.....	65
label synchronization at switching on	65
print speed	61
printer language.....	62
standard label	64
transfer ribbon control.....	61
printhead	
resistance	78
temperature	76
printing	
cancel print orders	92
feed	92
generation of selected page	91
initialisation of page handling	91
item number of print order	90
number of lines	89
print order	91
reset error	89
selection of current page	91
start printing	91
start/stop command	89
status printing	92
test print	92

R

reaction, unknown questions.....	68
reprint action.....	76
reset error	89
reset network device	72
rotate label.....	56
rotation (text, bar code, graphic)	9

S

save settings and restart (WLAN)	106
scan position	57
scanner	
operating mode.....	101
scan delay.....	102
scan length	102
scan mode	102
scan offset	101
scan timeout	102
scanner type	103
scanner variable	103
sensitivity reflexion photocell.....	58
sensitivity transmission photocell	58
serial data transmission	
connection plan RS232.....	6
connector assignment.....	5
server port (WLAN)	105
service functions	
custom logo	78
online/offline.....	75
print length correction	78

printhead resistance	78
printhead temperature	76
reprint action	76
transfer ribbon prior warning.....	76
transfer ribbon prior warning, diameter.....	77
transfer ribbon prior warning, mode.....	77
transfer ribbon prior warning, reduced speed.....	77
winder output	76
zero point adjustment (x value)	75
zero point adjustment (y value)	75
software input (dispenser I/O)	98
software output (dispenser I/O).....	99
SOH/ETB.....	67
speed.....	61
SSID identification (WLAN)	106
standard label.....	64
start/stop command.....	89
status print.....	92
switching threshold, photocell	59
synchronization	55
synchronization at switching on	65

T

tear off offset	73
test print.....	92
text set	
example	34
general information	33
time zone (hour offset)	72
transfer ribbon photocell.....	59
transfer ribbon prior warning	76
diameter	77
mode	77
reduced speed	77
transmission mode	70

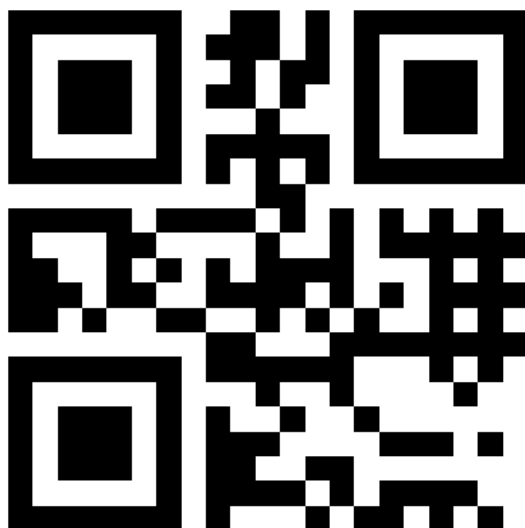
V

variables	
check digit.....	50
counter	38
counter, extended.....	39
currency variable	44
date/time	40, 41, 42, 43
EPC (electronic product code).....	49
GS1-128 parser	48
link field.....	37
memory card data.....	48
set structure	37
shift variable.....	45
substring	51
user guiding	46
user guiding with mask	47

W

winder output.....	76
WLAN	
connection status.....	104
DHCP support.....	104
encryption type	104
gateway address.....	105

high speed baud rate	107
high speed data connection.....	107
IP address.....	105
MAC address	104
netmask	105
readout and transfer configuration.....	106
save settings and restart.....	106
server port.....	105
SSID identification	106
WEP128 encryption	106
WEP64 encryption	106
WPA/WPA2 encryption.....	105
X	
x offset.....	73
Y	
y offset.....	73
Z	
zero point adjustment (x value)	75
zero point adjustment (y value)	75



REDEMAC

3540 Griffith St, Saint-Laurent, Quebec H4T 1A7

Phone: (888) 335-9570

www.redemac.com
request@redemac.com

