

LABEL PRINTERS

Packaging printing in perfection.



LABELLING VISIONS

possibility . is . everything



Contents

MICRA	Appealing design and compact overall size.	Page 4 . 5
PICA II	High reliability in second generation.	Page 6 . 7
VITA II	More flexibility. More efficiency. More reliability.	Page 8 . 9
COMPA II	Modular structure for high versatility.	Page 10 . 11
VARIO III	Bestselling printer already in its third generation.	Page 12 . 13
SPECTRA II	Highspeed performance in second generation.	Page 14 . 15
DUOPRINT	Simultaneous printing with different colours.	Page 16 . 17
SOFTWARE	LABELSTAR OFFICE . CONFIG TOOL	Page 18
ACCESSORIES	Labels . Transfer ribbons	Page 19



Micra – Appealing design and compact overall size.



Highlights

- > Cost-effective entry-level printers for small print volumes
- > Thermal direct or thermal transfer print
- > Print width up to 106.6 mm
- > Serial, parallel and USB port

Options

- > Ethernet/LAN interface
- > Rotation cutter unit
- > Dispenser unit
- > External label unwinder

Rotation cutter unit



Dispenser unit



External label unwinder



	Micra 104/8	Micra 106/12
Printing		
Print resolution	203 dpi	300 dpi
Print speed	50 ... 100 mm/s	50 ... 100 mm/s
Print width	max 104 mm	max 106 mm
Passage width	max 118 mm	max 118 mm
Printhead	Flat Type	Flat Type
Labels		
Adhesive labels, continuous labels	rolls: paper, cardboard, textile, synthetics	
Material weight	max 220 g/m ² (larger on demand)	
Label width	min 25 mm	
Label height	min 12 mm	
Label height Standard Ethernet (option)	max 850 mm max 800 mm	max 600 mm max 550 mm
Roll diameter	max 127 mm	
Core diameter	25.4 mm / 38.1 mm / 76.2 mm	
Winding	outside or inside	
Label sensor	below transmission and reflexion	
Transfer Ribbons		
Ink	outside	
Core diameter	25.4 mm / 1"	
Roll diameter	max Ø 68 mm	
Length	max 300 m	
Width	max 110 mm	
Fonts		
Font types	6 bitmap fonts 6 proportional fonts more fonts on demand	
Bar Codes		
1D bar codes	CODABAR, Code 128, Code 2/5 interleaved, Code 39, Code 39 extended, Code 93, EAN 13, EAN 8, EAN ADD ON, GS1-128, Identcode, ITF 14, Leitcode, Pharmacode, PZN 7 Code, UPC-A, UPC-E	
2D bar codes	Aztec Code, CODABLOCK F, DataMatrix, MAXICODE, PDF 417, QR Code	
Dimensions		
width x height x depth	226 x 171 x 285 mm	
Weight		
Weight	3 kg	
Interfaces		
Serial	RS-232C (max 57,600 baud)	
Parallel	Centronics	
USB	1.1	
Ethernet (option)	10/100 Base T	
Operating Conditions		
Nominal voltage	110 ... 230 V AC / 50 ... 60 Hz	
Power	max 70 VA	
Operating temperature	5 ... 35 °C	
Relative humidity	max. 80 % (non-condensing)	

Pica II – High reliability in second generation.



Highlights

- > Stable metal housing for industrial applications
- > Small footprint for applications with limited space
- > Serial, parallel and USB port
- > Display for comfortable operation
- > Cover with viewing window

Options

- > LAN and WLAN 802.11 b/g interface
- > Guillotine cutter unit
- > Dispenser unit
- > Dispenser I/O
- > External label rewinder

Guillotine cutter unit



Dispenser unit



External label rewinder



	Pica II 104/8	Pica II 106/12	Pica II 103/8 T	Pica II 108/12 T
Printing				
Print resolution	200 dpi	300 dpi	203 dpi	300 dpi
Print speed	max 100 mm/s	max 100 mm/s	max 100 mm/s	max 100 mm/s
Print width	max 104 mm	max 105.7 mm	max 104 mm	max 108.4 mm
Passage width	max 110 mm	max 110 mm	max 110 mm	max 110 mm
Printhead	Flat Type ²	Flat Type ²	Flat Type ¹	Flat Type ¹
Labels				
Adhesive labels, continuous labels	rolls or fan-fold: paper, cardboard, textile, synthetics			
Material weight	max 220 g/m ² (larger on demand)			
Label width	min 15 mm			
Label height Standard Cutter mode/dispenser mode	min 6 mm min 15 mm			
Label height Standard Ethernet (option)	max 750 mm max 650 mm	max 750 mm max 650 mm	max 650 mm max 450 mm	max 650 mm max 450 mm
Roll diameter internal unwinder internal rewinder	max 180 mm -			
Core diameter	40 mm / 75 mm (option)			
Winding	outside or inside			
Label sensor Standard Option	transmission top transmission and reflexion / bottom transmission and reflexion			
Transfer Ribbons (for thermal transfer printer only)				
Ink	outside / inside (option)			
Core diameter	25.4 mm / 1"			
Roll diameter	max Ø 70 mm			
Length	max 300 m			
Width	max 110 mm			
Fonts				
Font types	6 bitmap fonts 8 vector fonts/TrueType fonts 6 proportional fonts more fonts on demand			
Bar Codes				
1D bar codes	CODABAR, Code 128, Code 2/5 interleaved, Code 39, Code 39 extended, Code 93, EAN 13, EAN 8, EAN ADD ON, GS1-128, Identcode, ITF 14, Leitcode, Pharmacode, PZN 7 Code, PZN 8 Code, UPC-A, UPC-E			
2D bar codes	Aztec Code, CODABLOCK F, DataMatrix, GS1 DataMatrix, MAXICODE, PDF 417, QR Code			
GS1 bar codes	GS1 DataBar Expanded, GS1 DataBar Limited, GS1 DataBar Omnidirectional, GS1 DataBar Stacked, GS1 DataBar Stacked Omnidirectional, GS1 DataBar Truncated			
Dimensions				
width x height x depth	230 x 230 x 350 mm			
Weight				
Weight	9 kg			
Interfaces				
Serial	RS-232C (max 115,200 baud)			
Parallel	Centronics (SPP)			
USB	2.0 High Speed Slave			
Ethernet (option)	10/100 Base T, LPD, RawIP-Printing, DHCP, HTTP, FTP			
WLAN (option)	module 802.11 b/g/n WEP, WPA, WPA-PSK, WPA2, WPA2-PSK, EAP			
Operating Conditions				
Nominal voltage	230 V AC / 50 ... 60 Hz – 2 A 115 V AC / 50 – 60 Hz – 3 A (option) voltage adjustment by an internal voltage selector pre-adjustment 230 V AC			
Power	max 150 VA			
Operating temperature	5 ... 35 °C			
Relative humidity	max 80 % (non-condensing)			

¹ = Flat Type for thermal direct . ² = Flat Type for thermal transfer

Vita II – More flexibility. More efficiency. More reliability.



Highlights

- > Graphic display with white background lighting
- > Serial, parallel, LAN and USB port
- > Print resolution: 200 dpi, 300 dpi and 600 dpi
- > 2 x USB host for connection of USB keyboard/USB stick
- > Insertion for Compact Flash card

Options

- > WLAN 802.11 b/g interface
- > Guillotine cutter unit
- > Dispenser unit
- > Dispenser I/O
- > External label rewinder

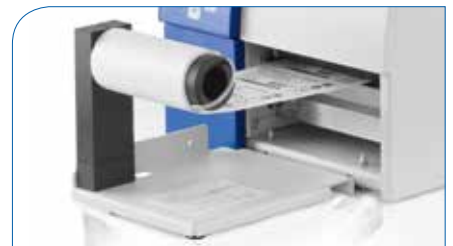
Guillotine cutter unit



Dispenser unit



External label rewinder



	Vita II 103/8 T	Vita II 104/8	Vita II 106/12	Vita II 106/24	Vita II 108/12 T
Printing					
Print resolution	203 dpi	203 dpi	300 dpi	600 dpi	300 dpi
Print speed	max 200 mm/s	max 200 mm/s	max 150 mm/s	max 100 mm/s	max 150 mm/s
Print width	max 104 mm	max 104 mm	max 105.7 mm	max 105.7 mm	max 108.4 mm
Passage width Standard Cutter mode/dispenser mode	max 116 mm max 112 mm	max 116 mm max 112 mm	max 116 mm max 112 mm	max 116 mm max 112 mm	max 116 mm max 112 mm
Printhead	Flat Type ¹	Flat Type ²	Flat Type ²	Flat Type ²	Flat Type ¹
Labels					
Adhesive labels, continuous labels	rolls or fan-fold: paper, cardboard, textile, synthetics				
Material weight	max 220 g/m ² (larger on demand)				
Label width	min 12 mm				
Label height Standard Cutter mode/dispenser mode	min 5 mm min 15 mm				
Label height	max 6000 mm	max 6000 mm	max 3000 mm	max 1000 mm	max 3000 mm
Roll diameter internal unwinder internal rewinder	max 180 mm -				
Core diameter	40 mm / 75 mm (option)				
Winding	outside or inside				
Label sensor	bottom transmission and reflexion				
Transfer Ribbons					
Ink	outside or inside				
Core diameter	25.4 mm / 1"				
Roll diameter	max Ø 80 mm				
Length	max 300 m				
Width	max 110 mm				
Fonts					
Font types	6 bitmap fonts 8 vector fonts/TrueType fonts 6 proportional fonts more fonts on demand				
Bar Codes					
1D bar codes	CODABAR, Code 128, Code 2/5 interleaved, Code 39, Code 39 extended, Code 93, EAN 13, EAN 8, EAN ADD ON, GS1-128, Identcode, ITF 14, Leitcode, Pharmacode, PZN 7 Code, PZN 8 Code, UPC-A, UPC-E				
2D bar codes	Aztec Code, CODABLOCK F, DataMatrix, GS1 DataMatrix, MAXICODE, PDF 417, QR Code				
GS1 bar codes	GS1 DataBar Expanded, GS1 DataBar Limited, GS1 DataBar Omnidirectional, GS1 DataBar Stacked, GS1 DataBar Stacked Omnidirectional, GS1 DataBar Truncated				
Dimensions					
width x height x depth	236 x 238 x 374 mm				
Weight					
Weight	11 kg				
Interfaces					
Serial	RS-232C (max 115,200 baud)				
Parallel	SPP				
USB	2.0 High Speed Slave				
Ethernet	10/100 Base T, LPD, RawIP-Printing, DHCP, HTTP, FTP				
2 x USB Master	connection for external USB keyboard and memory stick				
WLAN (option)	module 802.11 b/g/n WEP, WPA, WPA-PSK, WPA2, WPA2-PSK, EAP				
Operating Conditions					
Nominal voltage	110 ... 230 V AC / 50 ... 60 Hz				
Power	275 VA				
Nominal current	2.5 A				
Operating temperature	5 ... 35 °C				
Relative humidity	max 80 % (non-condensing)				

¹ = Flat Type for thermal direct . ² = Flat Type for thermal transfer

Compa II – Modular structure for high versatility.



Highlights

- > Large label rolls with a diameter up to 200 mm
- > Simplest operating and maintenance
- > Graphic display with white background lighting
- > Serial, parallel, LAN and USB port
- > 2 x USB host for connection of USB keyboard/USB stick
- > Insertion for Compact Flash card
- > Stand-alone mode

Options

- > WLAN 802.11 b/g interface
- > Rotation cutter unit
- > Dispenser unit
- > Dispenser I/O
- > Internal rewinder
- > External label rewinder

Guillotine cutter unit



Dispenser unit



External label rewinder



	Compa II 103/8 T	Compa II 104/8	Compa II 106/12	Compa II 106/24	Compa II 108/12 T	Compa II 162/12	Compa II 162/12 T
Printing							
Print resolution	203 dpi	203 dpi	300 dpi	600 dpi	300 dpi	300 dpi	300 dpi
Print speed (max)	200 mm/s	200 mm/s	200 mm/s	150 mm/s	200 mm/s	150 mm/s	150 mm/s
Print width (max)	104 mm	104 mm	105.7 mm	105.6 mm	108.4 mm	162.6 mm	162.6 mm
Passage width (max)	116 mm	116 mm	116 mm	116 mm	116 mm	176 mm	176 mm
Printhead	Flat Type ¹	Flat Type ²	Flat Type ²	Flat Type ²	Flat Type ¹	Flat Type ²	Flat Type ¹
Labels							
Adhesive labels, continuous labels	rolls or fan-fold: paper, cardboard, textile, synthetics						
Material weight	max 220 g/m ² (larger on demand)						
Label width (min)	12 mm	12 mm	12 mm	12 mm	12 mm	50 mm	50 mm
Label height Standard Cutter mode/dispenser mode	min 5 mm min 25 mm						
Label height	6000 mm	6000 mm	3000 mm	750 mm	3000 mm	2000 mm	2000 mm
Roll diameter internal unwinder internal rewinder	max 200 mm max 145 mm (option)						
Core diameter	40 mm / 75 mm (option)						
Winding	outside or inside						
Label sensor	below transmission and reflexion						
Transfer Ribbons							
Ink	outside or inside						
Core diameter	25.4 mm / 1"						
Roll diameter	max Ø 80 mm						
Length	max 300 m						
Width	max 110 mm . max 170 mm (Compa II 162)						
Fonts							
Font types	6 bitmap fonts 8 vector fonts/TrueType fonts 6 proportional fonts more fonts on demand						
Bar Codes							
1D bar codes	CODABAR, Code 128, Code 2/5 interleaved, Code 39, Code 39 extended, Code 93, EAN 13, EAN 8, EAN ADD ON, GS1-128, Identcode, ITF 14, Leitcode, Pharmacode, PZN 7 Code, PZN 8 Code, UPC-A, UPC-E						
2D bar codes	Aztec Code, CODABLOCK F, DataMatrix, GS1 DataMatrix, MAXICODE, PDF 417, QR Code						
GS1 bar codes	GS1 DataBar Expanded, GS1 DataBar Limited, GS1 DataBar Omnidirectional, GS1 DataBar Stacked, GS1 DataBar Stacked Omnidirectional, GS1 DataBar Truncated						
Dimensions							
width x height x depth	242 x 274 x 446 mm	242 x 274 x 446 mm	242 x 274 x 446 mm	242 x 274 x 446 mm	242 x 274 x 446 mm	302 x 274 x 446 mm	302 x 274 x 446 mm
Weight							
Weight	10 kg	10 kg	10 kg	10 kg	10 kg	14 kg	14 kg
Interfaces							
Serial	RS-232C (max 115,200 baud)						
Parallel	SPP						
USB	2.0 High Speed Slave						
Ethernet	10/100 Base T, LPD, RawIP-Printing, DHCP, HTTP, FTP						
2 x USB Master	connection for external USB keyboard and USB stick						
WLAN (option)	module 802.11 b/g/n WEP, WPA, WPA-PSK, WPA2, WPA2-PSK, EAP						
Operating Conditions							
Nominal voltage	110 ... 230 V AC / 50 ... 60 Hz						
Power	275 VA						
Nominal current	2.5 A						
Operating temperature	5 ... 35 °C						
Relative humidity	max 80 % (non-condensing)						

¹ = Flat Type for thermal direct . ² = Flat Type for thermal transfer

Vario III – Bestselling printer already in its third generation.



Highlights

- > Internal rewinder (max Ø 100 mm)
- > Serial, parallel, LAN and USB port
- > Unicode-compliant for multilingual applications
- > Stand-alone mode
- > 2 x USB host for connection of USB keyboard/USB stick
- > Front USB host
- > Insertion for Compact Flash card

Options

- > 7" Touch-screen display
- > Bar code scanner
- > WLAN 802.11 b/g interface
- > Dispenser I/O
- > Guillotine cutter unit
- > Dispenser unit

Guillotine cutter unit



Dispenser unit



Touch-screen display



	Vario III 103/8 T	Vario III 104/8	Vario III 107/12	Vario III 107/24	Vario III 108/12 T
Printing					
Print resolution	203 dpi	203 dpi	300 dpi	600 dpi	300 dpi
Print speed	max 250 mm/s	max 250 mm/s	max 250 mm/s	max 100 mm/s	max 250 mm/s
Print width	max 104 mm	max 104 mm	max 105.7 mm	max 105.7 mm	max 108.4 mm
Passage width	max 110 mm	max 110 mm	max 110 mm	max 110 mm	max 110 mm
Printhead	Flat Type ¹	Flat Type ²	Flat Type ²	Flat Type ²	Flat Type ¹
Labels					
Adhesive labels, continuous labels	rolls or fan-fold: paper, cardboard, textile, synthetics				
Material weight	max 220 g/m ² (larger on demand)				
Label width	min 15 mm				
Label height Standard Cutter mode/dispenser mode	min 6 mm min 15 mm				
Label height	max 6000 mm	max 6000 mm	max 3000 mm	max 1000 mm	max 3000 mm
Roll diameter internal unwinder internal rewinder	max 200 mm max 100 mm				
Core diameter	40 mm / 75 mm (option)				
Winding	outside or inside				
Label sensor Standard Option	transmission top or bottom reflexion				
Transfer Ribbons					
Ink	outside or inside				
Core diameter	25.4 mm / 1"				
Roll diameter	max Ø 80 mm				
Length	max 300 m				
Width	max 110 mm				
Fonts					
Font types	6 bitmap fonts 8 vector fonts/TrueType fonts 6 proportional fonts more fonts on demand				
Bar Codes					
1D bar codes	CODABAR, Code 128, Code 2/5 interleaved, Code 39, Code 39 extended, Code 93, EAN 13, EAN 8, EAN ADD ON, GS1-128, Identcode, ITF 14, Leitcode, Pharmacode, PZN 7 Code, PZN 8 Code, UPC-A, UPC-E				
2D bar codes	Aztec Code, CODABLOCK F, DataMatrix, GS1 DataMatrix, MAXICODE, PDF 417, QR Code				
GS1 bar codes	GS1 DataBar Expanded, GS1 DataBar Limited, GS1 DataBar Omnidirectional, GS1 DataBar Stacked, GS1 DataBar Stacked Omnidirectional, GS1 DataBar Truncated				
Dimensions					
width x height x depth	230 x 310 x 450 mm				
Weight					
Weight	16 kg				
Interfaces					
Serial	RS-232C (max 115,200 baud)				
Parallel	SPP				
USB	2.0 High Speed Slave				
Ethernet	10/100 Base T, LPD, RawIP-Printing, DHCP, HTTP, FTP				
3 x USB Host	connection for external USB keyboard and USB stick				
WLAN (option)	module 802.11 b/g/n WEP, WPA, WPA-PSK, WPA2, WPA2-PSK, EAP				
Operating Conditions					
Nominal voltage	110 ... 230 V AC / 50 ... 60 Hz				
Power	max 150 VA				
Operating temperature	5 ... 35 °C				
Relative humidity	max 80 % (non-condensing)				

¹ = Flat Type for thermal direct . ² = Flat Type for thermal transfer

Spectra II – Highspeed performance in second generation.



Highlights

- > 6.5" Touch-screen display
- > Print speed up to 350 mm/s
- > Front USB host
- > Compact cover

Options

- > Rotation cutter unit
- > Dispenser unit
- > Roll-to-Roll
- > Internal rewinder
- > External rewinder

Rotation cutter unit



Dispenser unit



Internal rewinder



	Spectra II 103/8 (104/8)	Spectra II 106/12	Spectra II 106/24	Spectra II 107/12	Spectra II 108/12	Spectra II 160/12	Spectra II 162/12	Spectra II 216/12
Printing								
Print resolution	200 dpi	300 dpi	600 dpi	300 dpi	300 dpi	300 dpi	300 dpi	300 dpi
Print speed	350 mm/s	350 mm/s	100 mm/s	350 mm/s	350 mm/s	300 mm/s	300 mm/s	200 mm/s
Print width	104 mm	105.7 mm	105.6 mm	106.6 mm	108.4 mm	160 mm	162.6 mm	216.8 mm
Passage width	116 mm	116 mm	116 mm	116 mm	116 mm	176 mm	176 mm	226 mm
Printhead	Flat Type ¹⁺²⁽²⁾	Flat Type ²	Flat Type ²	Corner Type ²	Flat Type ¹⁺²	Corner Type ²	Flat Type ¹⁺²	Flat Type ¹⁺²
Labels								
Adhesive labels, continuous labels	rolls or fan-fold: paper, cardboard, textile, synthetics							
Material weight	max. 220 g/m ² (larger on demand)							
Label width	min 15 mm	min 15 mm	min 15 mm	min 15 mm	min 15 mm	min 50 mm	min 50 mm	min 100 mm
Label height Standard Cutter mode/dispenser mode	min 6 mm min 25 mm	min 6 mm min 25 mm	min 15 mm min 25 mm	min 6 mm min 25 mm	min 6 mm min 25 mm	min 15 mm min 25 mm	min 15 mm min 25 mm	min 15 mm min 25 mm
Label height	max 6000 mm	max 3000 mm	max 750 mm	max 3000 mm	max 3000 mm	max 2000 mm	max 2000 mm	max 1000 mm
Roll diameter Internal unwinder Internal rewinder	max 200 mm max 200 mm (option)							
Core diameter	40 mm / 75 mm (option)							
Winding	outside or inside							
Label sensor Standard Option	bottom transmission and reflexion top transmission and reflexion, ultrasonic photocell							
Transfer Ribbon								
Ink	outside or inside							
Core diameter	25.4 mm / 1"							
Roll diameter	max Ø 90 mm							
Length	max 450 m							
Width	max 110 mm	max 110 mm	max 110 mm	max 110 mm	max 110 mm	max 163 mm	max 170 mm	max 220 mm
Fonts								
Font types	6 bitmap fonts 8 vector fonts/TrueType fonts 6 proportional fonts other fonts on demand							
Bar Codes								
1D bar codes	CODABAR, Code 128, Code 2/5 interleaved, Code 39, Code 39 extended, Code 93, EAN 13, EAN 8, EAN ADD ON, GS1-128, Identcode, ITF 14, Leitcode, Pharmacode, PZN Code, UPC-A, UPC-E							
2D bar codes	Aztec Code, CODABLOCK F, DataMatrix, GS1 DataMatrix, MAXICODE, PDF 417, QR Code							
Composite bar codes	GS1 DataBar Expanded, GS1 DataBar Limited, GS1 DataBar Omnidirectional, GS1 DataBar Stacked, GS1 DataBar Stacked Omnidirectional, GS1 DataBar Truncated							
Dimensions								
width x height x depth	287 x 380 x 503 mm	287 x 380 x 503 mm	287 x 380 x 503 mm	287 x 380 x 503 mm	287 x 380 x 503 mm	337 x 380 x 503 mm	337 x 380 x 503 mm	387 x 380 x 503 mm
Weight								
Weight	19 kg	19 kg	19 kg	19 kg	19 kg	21 kg	21 kg	28 kg
Interfaces								
Serial	RS-232C (max 115,200 baud)							
Parallel	SPP							
USB	2.0 High Speed Slave							
Ethernet	10/100 Base T, LPD, RawIP-Printing, DHCP, HTTP, FTP							
3 x USB Host	connection for external USB keyboard and USB stick							
WLAN (option)	module 802.11 b/g/n WEP, WPA, WPA-PSK, WPA2, WPA2-PSK, EAP							
Operating Conditions								
Nominal voltage	110 ... 230 V AC							
Power	300 VA							
Nominal current	2.7 A							
Operating temperature	5 ... 35 °C							
Relative humidity	max 80 % (non-condensing)							

¹ = for thermal direct . ² = for thermal transfer

DuoPrint – Simultaneous printing with different colours.



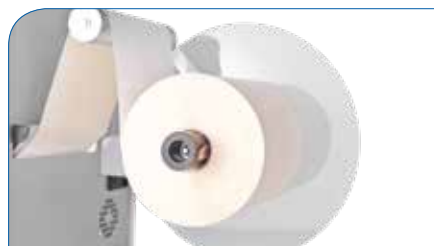
Highlights

- > Two thermal transfer print units one behind the other
- > Perfect solution for GHS requirements
- > Transfer ribbon saving at second print unit
- > For label rolls up to a diameter of 300 mm
- > Rewinders with independent power supply
- > External unroller
- > Compact cover
- > 2 x USB host for connection of USB keyboard/USB stick
- > Insertion for Compact Flash card

External label rewinder



External unroller



Compact cover



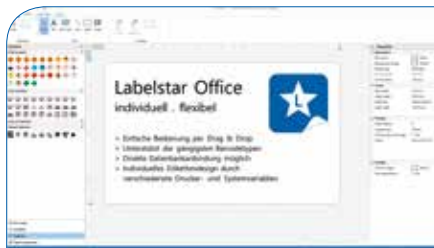
	DuoPrint 107/12	DuoPrint 160/12
Printing		
Print resolution	305 dpi	305 dpi
Print speed	max 150 mm/s	max 120 mm/s
Print width	max 106.6 mm	max 160 mm
Passage width	max 116 mm	max 176 mm
Printhead	Corner Type	Corner Type
Labels		
Adhesive labels, continuous labels	rolls: paper, cardboard, textile, synthetics	
Material weight	max 220 g/m ² (larger on demand)	
Label width	min 15 mm	min 50 mm
Label height	min 25 mm	min 25 mm
Label height Standard Ethernet (option)	max 1200 mm max 1100 mm	max 800 mm max 700 mm
Roll diameter external unwinder external rewinder	max 300 mm max 300 mm (option)	
Core diameter	40 mm / 75 mm (option)	
Winding	outside or inside	
Label sensor	bottom transmission and reflexion	
Transfer Ribbons		
Ink	outside or inside	
Core diameter	25.4 mm / 1"	
Roll diameter	max Ø 90 mm	
Length	max 450 m	
Width	max 110 mm	163 mm
Fonts		
Font types	6 bitmap fonts 8 vector fonts/TrueType fonts 6 proportional fonts more fonts on demand	
Bar Codes		
1D bar codes	CODABAR, Code 128, Code 2/5 interleaved, Code 39, Code 39 extended, Code 93, EAN 13, EAN 8, EAN ADD ON, GS1-128, Identcode, ITF 14, Leitcode, Pharmacode, PZN 7 Code, PZN 8 Code, UPC-A, UPC-E	
2D bar codes	Aztec Code, CODABLOCK F, DataMatrix, GS1 DataMatrix, MAXICODE, PDF 417, QR Code	
GS1 bar codes	GS1 DataBar Expanded, GS1 DataBar Limited, GS1 DataBar Omnidirectional, GS1 DataBar Stacked, GS1 DataBar Stacked Omnidirectional, GS1 DataBar Truncated	
Dimensions		
width x height x depth	275 x 380 x 475 mm	335 x 380 x 475 mm
incl. external unwinder (option)	275 x 410 x 825 mm	335 x 410 x 825 mm
Weight		
Weight	approx. 22 kg	approx. 27 kg
incl. external unwinder (option)	approx. 24.5 kg	approx. 29.8 kg
Interfaces		
Serial	RS-232C (max 115,200 Baud)	
Parallel	SPP	
USB	2.0 High Speed Slave	
Ethernet	10/100 Base T, LPD, RawIP-Printing, DHCP, HTTP, FTP	
2 x USB Master	connection for external USB keyboard and memory stic	
Operating Conditions		
Nominal voltage	110 ... 230 V AC / 50 ... 60 Hz	
Power	600 VA	
Nominal current	110 V AC – 3 A / 230 V AC – 1.5 A	
Fuse values	T5AH 250 V	
Operating temperature	5 ... 35 °C	
Relative humidity	max 80 % (non-condensing)	

LABELSTAR OFFICE – Label design software.



Highlights

- > Simple operation by Drag&Drop
- > Support for all the most common bar code types
- > Direct database connection
- > Individual label design through various printer and system variables
- > Mark-ups for flexible text formatting

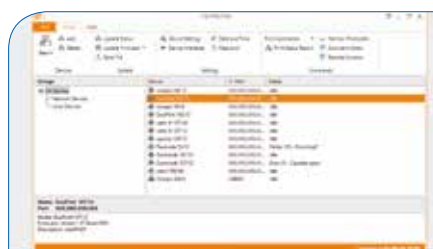


CONFIG TOOL – Configuration software.



Highlights

- > Simple configuration of printing systems and touch panels
- > Automated firmware update
- > Support for parallel, serial, USB and network interfaces
- > Export/Import of current printer configurations



LABELS – the maximum number of possibilities.



What applies to our printing systems also applies to our labels: almost unlimited choice and individual solutions for all industries. We supply plastic, paper or cardboard labels on a roll in a wide range of formats: pre-printed or blank, removable or permanent, exactly to your requirements. We thus bring any labelling to your product!



TRANSFER RIBBONS – for a perfect transfer.



Our transfer ribbons are optimally adapted for use with our printing systems and labels. They are available in standard (wax), premium (wax/resin) and special (resin) versions. Whether on paper or plastic, scratch and smudge proof, high-resolution – we offer you the ideal solution for any requirement.





Local retailer

Branches:

Sales office Bavaria

Marienplatz 8a . 83043 Bad Aibling
Phone +49 8061 3498888 . Fax +49 8061 3499127 . rstreck@carl-valentin.de

Sales office Spain

Calle historiador Vedia 14 5ºB . 15004 La Coruña
Phone +34 881 103163 . Mobile +34 609 022 241 . mlano@carl-valentin.es

Sales office Switzerland

Swiss Business Haus . Moosackerstraße 75 . 8105 Regensdorf
Phone +41 61 9739641 . Mobile +41 79 7448436 . info@carl-valentin.ch

Sales office Greece

AristonPrint . Kioutsouki Margarita . Simwoli . 62047 Serres
Mobile +30 698 011 6703 . Mobile +30 698 011 6730 . info@aristonprint.com



Carl Valentin GmbH
Neckarstraße 78–86 u. 94
78056 Villingen-Schwenningen
Phone +49 7720 9712-0 . Fax +49 7720 9712-9901
info@carl-valentin.de . www.carl-valentin.de

